

Regional Parks

Terms of Reference to Prepare the 2010 Regional Parks Strategic Plan

CRD

Capital Regional District | March 2009



CRD
Making a difference...together

Capital Regional District | Regional Parks
490 Atkins Avenue, Victoria, BC V9B 2Z8
T: 250.478.3344
crdparks@crd.bc.ca
www.crd.bc.ca/parks

Table of Contents

1.0	Introduction	1
2.0	Purpose & Goals	4
3.0	Relationship Between the CRD Corporate Strategic Plan and the Key Regional Parks Planning Documents	5
4.0	Background Information	6
5.0	Process to Prepare the Strategic Plan.....	7
6.0	Public Participation Process	8
7.0	Timeline	11
APPENDIX A – Terms of Reference for Establishing a Citizen Advisory Panel for the Regional Parks Strategic Plan		12

1.0 INTRODUCTION

The Regional Parks system in the Capital Regional District (CRD) has been built over the past 43 years. Today, this system encompasses 11,575 hectares of land in 28 regional parks and 88.5 kilometers of contiguous regional trails (see Map 1). This system protects diverse natural areas that help define the region we live in, provides many opportunities for people to enjoy, appreciate and experience these natural areas, and contributes to the environmental, social and economic sustainability of the region.

In 2000, the CRD Board adopted a ten-year Regional Parks Master Plan. The Master Plan is a strategic document that sets the direction for the entire Regional Parks system. The Master Plan does not address park-specific management or operational issues. The Plan provides a vision for Regional Parks; statement of purpose for the parks and trails; map showing the proposed system of regional parks and trails; guidelines for managing regional parks and trails; and an implementation strategy which includes strategic directions for Regional Parks.

The 2000 Master Plan has had a major influence on Regional Parks. It guided the establishment of the Land Acquisition Fund, which led to the acquisition of 2,800 hectares of land worth \$28 million. It helped guide the stewardship of the natural environment and connect people to the land, offering them a rich source of personal discovery, joy, renewal and health that inspires a deep sense of belonging and stewardship for generations to come. It also helped guide opportunities for citizens, community organizations and other levels of government to partner with Regional Parks to achieve our vision.

Regional Parks now needs to set a course for the next ten years. We face many opportunities and challenges: the region has grown by an estimated 35,200 people over the past ten years and is expected to grow by another 32,000 over the next decade; the regional parks system has grown over the past 10 years from 8,620 to 11,575 hectares; use of regional parks and trails has increased; outdoor recreational pursuits have become more diverse; natural areas and species continue to be lost; new environmental challenges continue to emerge both locally and globally; and questions are being raised about how regional parks and trails should be managed and what the management priorities should be. To respond to these opportunities and challenges, Regional Parks needs to examine the capacity of the organization to operate and manage the system in a fiscally responsible

manner while providing excellent stewardship of natural and cultural resources and built infrastructure, and ensuring the delivery of excellent services to park visitors.

Regional Parks is embarking on a process to prepare a strategic plan for the period 2010 to 2019. In preparing this plan the term Master Plan will be changed to Strategic Plan to more accurately reflect the intent of the document. The term Master Plan tends to be associated with a land use plan for the development of an area. A strategic plan is a management tool that applies to organizations and addresses fundamental organizational decisions. The Regional Parks Strategic Plan will provide a set of management guidelines that define the long-term “big picture” framework within which policy, fiscal, administrative and strategic decisions would occur. The plan will thus focus the energy of the organization, ensure that everyone is working in the same direction and provide flexibility for the organization to respond to changing circumstances.

Map 1

Terms of Reference to Prepare the Regional Parks Strategic Plan



Regional Park	Lake / Reservoir
Other Park	Canada
Capital Regional District	United States
Municipal Boundary	

1:425,000

0 2.5 5 10 Kilometers

North Arrow

Projection: Universal Transverse Mercator, Zone 18, North, North America Datum

DISCLAIMER
 The Capital Regional District does not warrant the accuracy within the map, nor will it accept responsibility for errors or omissions. The CRD reserves the right to alter or update the information without notice. Maps should not be used as navigation tools.
 February 2009 | 000_Parks_Overview_Terms_0209.mxd | Parks GIS Services



- Regional Parks**
- | | |
|------------------------------|---|
| 1. Albert Head Lagoon | 18. Mathieson Lake |
| 2. Ayum Creek Park Reserve | 19. Matthews Point Park Reserve |
| 3. Bear Hill | 20. Mill Farm Park Reserve |
| 4. Brooks Point Park Reserve | 21. Mill Hill |
| 5. Gales Bay | 22. Mount Parke |
| 6. Devonian | 23. Mount Wells |
| 7. East Point | 24. Mount Work |
| 8. East Sooke | 25. Roche Cove |
| 9. Elk/Beaver Lake | 26. Sea to Sea Green Blue Bell Park Reserve |
| 10. Francis/King | 27. Sooke Hills Wilderness Park Reserve |
| 11. Galloping Goose Trail | 28. Sooke Potholes |
| 12. Gonzales Hill | 29. Thetis Lake |
| 13. Harth Hill | 30. Wilby's Lagoon |
| 14. Island View Beach | 31. Trans Canada Trail * |
| 15. Kapoor Park Reserve | |
| 16. Lochside Trail | |
| 17. Lone Tree Hill | |
- * Temporary Name

2.0 PURPOSE AND GOAL

2.1 Purpose

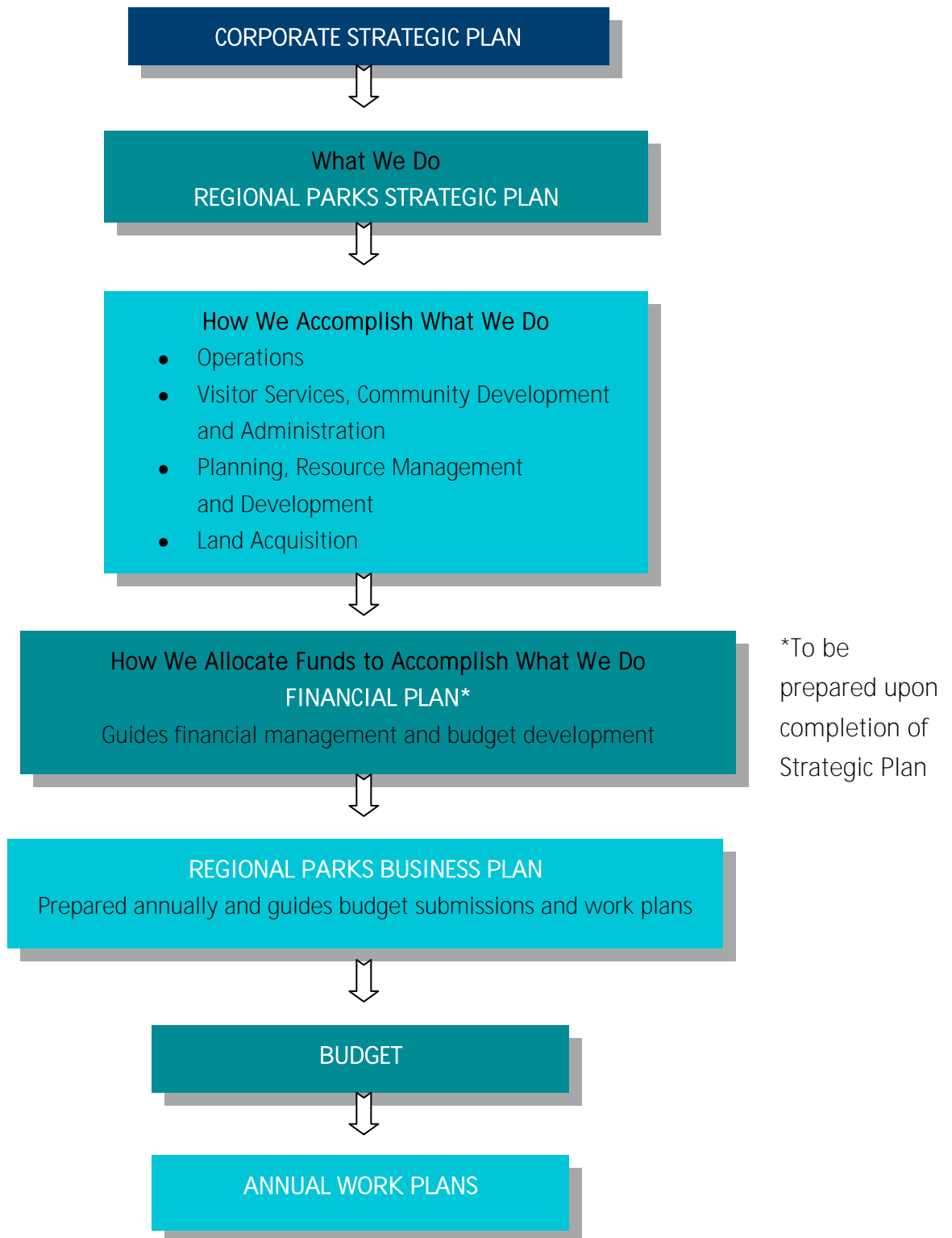
- (a) Prepare the Regional Parks Strategic Plan for the period of 2010 to 2019 that focuses on fundamental organizational decisions: what the organization does, why it does it, what the most important opportunities and challenges are that the organization needs to respond to and what the right actions are to move the organization forward.
- (b) Engage citizens, First Nations, governments, CRD Directors and Regional Parks volunteers and staff in the process to prepare the Strategic Plan, in an open and inclusive way, by informing, consulting, involving and collaborating with them.

2.2 Goal

The goal of the Strategic Plan will be to address the following:

- (a) Benefits of Regional Parks;
- (b) Contribution of Regional Parks to the social, economic and environmental sustainability of the region;
- (c) Opportunities and challenges facing Regional Parks;
- (d) Vision and purpose for Regional Parks;
- (e) Link between the Regional Parks Strategic Plan and other CRD initiatives, such as the Regional Growth Strategy, Climate Action, and Watershed Protection;
- (f) Future regional parks and trails system and how this system will be integrated with other park and trail systems in the region;
- (g) Principles that will guide the management of regional parks and trails; and
- (h) Priorities over the next ten years.

3.0 RELATIONSHIP BETWEEN THE CRD CORPORATE STRATEGIC PLAN AND KEY REGIONAL PARKS PLANNING DOCUMENTS AND SERVICES



4.0 BACKGROUND INFORMATION

To engage in informed discussions about the future of Regional Parks, the following information is needed:

- (a) Status of the strategic actions from the 2000 Master Plan;
- (b) The view of regional residents and park visitors about regional parks and future management priorities;
- (c) The value added to society by having regional parks (i.e. the economic, social and environmental value);
- (d) Comparison of the amount of protected area in the CRD with other similar jurisdictions;
- (e) Overview of how regional parks are managed in other similar jurisdictions;
- (f) The relationship of Regional Parks with other agencies who manage protected areas in the CRD;
- (g) Sensitive ecosystems and outdoor recreation opportunities west of Sooke River;
- (h) Criteria to be used to identify areas of interest to regional parks;
- (i) The areas of interest to Regional Parks as potential future regional parks;
- (j) Budget allocation to Regional Park services;
- (k) Regional population trends and growth management plans; and
- (l) Environmental and societal trends that could affect the management of Regional Parks.

5.0 PROCESS TO PREPARE THE STRATEGIC PLAN

TIMELINE	KEY STEPS	REGIONAL PARKS COMMITTEE	BOARD	ENGAGEMENT
Spring 2009	Terms of Reference	Recommend to Board	Approval	
Spring 2009	Establish Citizen Advisory Panel	Recommend to Board	Approval	
Summer/Winter 2010	Collect and Review Background Information Identify and Discuss Opportunities and Challenges	Review results	Review results	<ul style="list-style-type: none"> • Citizen Advisory Panel • Inform, consult and involve citizens • Inform and involve First Nations and governments • Hold a one day forum with panel of experts to explore the future of regional parks
Spring 2010	Draft Strategic Plan	Recommend to Board	Approve	<ul style="list-style-type: none"> • Citizen Advisory Panel to recommend draft Strategic Plan to Committee • Inform, consult and involve citizens • Inform and involve First Nations and governments
Fall 2010	Final Strategic Plan	Recommend to Board	Adoption	<ul style="list-style-type: none"> • Citizen Advisory Panel to recommend Strategic Plan to Regional Parks Committee • Inform citizens, First Nations and governments of decision

6.0 PUBLIC PARTICIPATION PROCESS

A comprehensive public participation program is essential in preparing the Strategic Plan to ensure ideas, opinions, values and issues are known and considered. The process will help to:

- 1) Achieve the best policy result by promoting the overall public interest and participation; and,
- 2) Maximize public satisfaction with the ultimate decisions.

In addition to public participation, First Nations and federal, provincial and local governments also need to be involved to ensure that their interests are considered in preparing the plan.

6.1 Purpose

To engage CRD citizens, park visitors and volunteers, First Nations, federal, provincial and local governments, and organizations who have an interest in the future of Regional Parks, by informing, consulting, involving and collaborating with them in the development of the Strategic Plan.

6.2 Goals

There are four goals for the public participation process:

- 1) To inform and educate;
- 2) To incorporate public values into decision making;
- 3) To improve the substantive quality of decisions, and
- 4) To influence the direction of Regional Parks for the next ten years.

6.3 Guiding Principles

The public participation process will be guided by the following principles:

- Full participation;
- Transparent process;

- Mutual understanding;
- Inclusive solutions;
- Relevant;
- Easily accessible; and
- Responsive.

Regional Parks will inform participants about the feedback received, how the input was considered and how it influenced decisions.

6.4 Public Participation

Public participation will range from providing information, to consulting and involving residents and park visitors through surveys and public meetings, to engaging the public by collaborating through a Citizen Advisory Panel.

Citizen Advisory Panel

CRD will look to the public for advice about the future direction of Regional Parks. This will be accomplished through establishing a Citizen Advisory Panel. The proposed terms of reference for establishing the Citizen Advisory Panel is presented in Appendix A.

6.5 First Nation Engagement

The CRD is committed to informing, involving and collaborating with First Nations in the preparation of the Regional Parks Strategic Plan. Regional Parks will ask First Nations how they might wish to participate. Opportunities to participate could be through the Citizen Advisory Panel, staff technical working group and meetings with individual First Nations.

6.6 Federal, Provincial and Municipal Government Engagement

Engagement will range from providing information, to consulting and involving participants through workshops, meetings and a staff technical working group.

Participants:

CRD Board and Regional Parks Committee

CRD Departments:

Planning and Protective Services

Parks and Community Services

- Juan de Fuca Parks and Recreation
- Peninsula Recreation
- Salt Spring Island Parks and Recreation
- Southern Gulf Islands Parks and Recreation Commissions

Environmental Services

Water

Corporate Services

Finance

CRD Advisory Groups

Roundtable on the Environment

Development and Planning Advisory Committee

Municipalities

Municipal Councils

Parks and Recreation Departments

Planning Departments

Federal Government

Parks Canada

Canadian Wildlife Service

Department of National Defense

Province of British Columbia

Ministry of Environment

Ministry of Tourism, Culture and the Arts

Ministry of Transportation and Infrastructure

BC Parks

Islands Trust

7.0 TIMELINE

	2009				2010			
	1 st Quarter	2 nd Quarter	3 rd Quarter	4 th Quarter	1 st Quarter	2 nd Quarter	3 rd Quarter	4 th Quarter
2009/2010 Key Tasks								
Terms of Reference								
Establish CAP*								
Meetings with CAP								
Public, Government and First Nations Engagement								
Survey of Park and Trail Visitors								
Survey of Regional Residents								
Board Adoption of Strategic Plan								

Note:

*CAP – Citizen Advisory Panel

APPENDIX A

TERMS OF REFERENCE FOR ESTABLISHING A CITIZEN ADVISORY PANEL FOR THE REGIONAL PARKS 2010 STRATEGIC PLAN

1.0 INTRODUCTION

The Terms of Reference defines the purpose and process to establish a Citizen Advisory Panel (CAP) for the preparation of the Regional Parks Strategic Plan.

2.0 PURPOSE

The purpose of the CAP is to provide advice to the Regional Parks Committee on the preparation of the Regional Parks 2010 to 2019 Strategic Plan and to recommend a Regional Parks Strategic Plan to the Regional Parks Committee.

3.0 MEMBERSHIP

The CAP will be made up of at least 20 people. Members will be selected by using the following criteria:

1. 13 people will be selected from the three sub-regions in the CRD and one person from each of the three electoral areas:
 - a. Five people from the Core (Saanich, Victoria, Oak Bay, Esquimalt and View Royal);
 - b. Three people from the Saanich Peninsula (North Saanich, Central Saanich and Sidney);
 - c. Five people from the West Shore (Colwood, Langford, Highlands, Metchosin and Sooke); and
 - d. One person from Southern Gulf Islands, Salt Spring Island and Juan de Fuca electoral areas.

2. Four youth who will be attending high school in 2009/2010 and 2010/2011. The goal is to have one person from each of the four School Districts in the CRD (i.e. Gulf Islands, Saanich, Greater Victoria and Sooke).

3. An interest in and knowledge of regional parks in the CRD.
4. An interest in the future of the region.
5. Familiarity with the range of interests to be addressed in the project (i.e. park management, conservation, outdoor recreation, strategic planning).
6. A willingness to commit volunteer time of approximately 18 months to the project. This will include monthly to bi-monthly CAP meetings, several public meetings, a workshop, field trips and other project-related meetings.
7. Ability to work in a group and develop agreement with people who may hold different views.
8. Achieve a balanced representation based on gender and age.
9. Represent the public interest in a regional context and not that of any organization or specific interest.

4.0 FIRST NATIONS

Regional Parks will ask First Nations that might have an interest in the outcome of the Regional Parks Strategic Plan how they might wish to participate.

5.0 SELECTION PROCESS

The CRD will invite the public to apply for membership on the CAP.

A six-person selection group will review the applications, assess the application on the selection criteria and make recommendations to the Regional Parks Committee regarding appointment to the CAP. The six-person review group will consist of one member from the Regional Parks Committee and one staff member from:

- Regional Parks;

- Inter-Municipal Parks and Recreation Directors Committee;
- Local government in a planning department;
- BC Parks; and
- Parks Canada.

6.0 APPOINTMENT

The CAP members will be appointed by the CRD Board for the length of the project.



regional parks strategic plan | **2012—2021**





ALBERT HEAD LAGOON REGIONAL PARK - *Sun briefly shines through the clouds at Albert Head Lagoon in Victoria.*

PHOTO BY: Bryn Tassell
FLICKR PROFILE: Bryn Tassell

ON THE FRONT COVER:
LONE TREE HILL REGIONAL PARK - *The hilltop is an excellent spot for birdwatching. Look for bald eagles, red-tailed hawks and turkey vultures riding the thermals overhead.*

PHOTO BY: Rachel Grigg
FLICKR PROFILE: Ray L G

At the Capital Regional District (CRD) we are proud to support the local arts, and we are pleased to feature local photographers in many of our Regional Parks documents. For more community sourced images of our beautiful regional parks, visit our Flickr photo group **Regional Parks Photography in the Capital Regional District** and feel free to add your own photographs taken in any regional park.

The Regional Parks Strategic Plan 2012-2021 replaces the 2000 CRD Parks Master Plan.

PACIFIC TREE FROG

PHOTO BY: Minette Layne

PHOTO SOURCED FROM CRD IMAGE LIBRARY



citizen advisory panel

The CRD Board approved the Terms of Reference for the preparation of the Regional Parks Strategic Plan in May 2009. The Terms of Reference included the establishment of a Citizen Advisory Panel (CAP). The purpose of the CAP is to provide advice to the Regional Parks Committee on the preparation of the Regional Parks 2012—2021 Strategic Plan and to recommend a Regional Parks Strategic Plan to the Regional Parks Committee.

This Strategic Plan represents the work of the members including:

Current Members

Dave Chater (chair)

Maleea Acker (vice-chair)

John Chapman

Jenny Clark

Timothy Conlin

Dustin Creviston

Jeffrey Doyle

Marnie Essery

Deanna Henry

Jim Knock

James MacPherson

Bob Peart

Steven Peterson

Paul Reeve



GREATER YELLOWLEGS SANDPIPER - *This sandpiper sports its characteristic long yellow legs and long bill with slight upward curve in the tidal mud flats of Albert Head Lagoon.*

PHOTO BY: Julie Macdonald
FLICKR PROFILE: TT_MAC

foreword

As highlighted in the draft Strategic Plan, the volunteer Citizen Advisory Panel (CAP) and the majority of the public felt that Regional Parks is on the right path and nature protection and conserving biodiversity should be Regional Parks' top priority. The vision presented in this plan envisions regional parks and trails becoming a part of a larger integrated system of natural lands. An expanded regional parks and trails system would be a core part of this larger conservation vision, but would require a sustained commitment by the CRD and a

wide range of private and public partners to realize this ambitious and achievable objective.

While the CAP heard from the majority of the public that nature protection is the top priority for Regional Parks, we also heard that parks and trails have immense health benefits and are integral to both the ecological health of the region and to human health and wellness. The emphasis on healthy ecosystems and correspondingly to human health has taken a higher profile in people's minds, particularly since the development of the 2000 Parks Master

Plan. The increased importance of ecological health and associated human health is woven into the goals and strategic priorities in the draft plan.

Much as the Sea to Sea Greenbelt Strategy and the Galloping Goose Regional Trail over 20 years ago helped define this region, we are now at another critical juncture in this region's evolution. If we are to sustain the diverse ecosystem and plentiful outdoor recreation opportunities that this region is blessed with well into the future, bold and innovative actions need to be taken.

The CAP feels that this Strategic Plan provides an initial "roadmap" for Regional Parks and the CRD towards this larger vision.

Sincerely,

A handwritten signature in black ink, appearing to read "G. David Chater". The signature is fluid and cursive, with a large, sweeping flourish at the end.

G. David Chater, Chair
Citizen Advisory Panel
Regional Parks' Strategic Plan

table of contents

VISION FOR REGIONAL PARKS	6
THE MISSION OF REGIONAL PARKS	9
OVERVIEW OF THE REGIONAL PARKS STRATEGIC PLAN	11
PART ONE	
SECTION ONE: OVERVIEW OF THE CAPITAL REGIONAL DISTRICT	15
MAP 1 - Administrative Boundaries	17
MAP 2 - Biogeoclimatic Zones in CRD	19
FIGURE 1 - How Regional Parks Contribute to Achieving Regional Sustainability	23
TABLE 1 - CRD Land Base Under Park and Protected Status	24
MAP 3 - Parks and Protected Areas in CRD	25
TABLE 2 - Comparison of the Function of Park Agencies	26
SECTION TWO: BACKGROUND TO PREPARING THE STRATEGIC PLAN	29
FIGURE 2- Strategic Planning Process	36
SECTION THREE: THE VALUE OF REGIONAL PARKS & TRAILS	40
FIGURE 3- The Value of Regional Parks and Trails	42
SECTION FOUR: CHALLENGES FACING REGIONAL PARKS & TRAILS	56

PART TWO

SECTION FIVE: GOALS FOR REGIONAL PARKS & TRAILS	67
TABLE 3 - Regional Park Classifications	72
TABLE 4 - Classifications of Existing Parks	73
SECTION SIX: THE PROPOSED REGIONAL PARKS & TRAILS SYSTEM	79
MAP 4 - Proposed Regional Parks Trails and System	81
SECTION SEVEN: MANAGEMENT GOALS	92
FIGURE 4 - Environmental Management Framework	95
FIGURE 5 - Adaptive Management Framework	95
SECTION EIGHT: IMPLEMENTING THE STRATEGIC PLAN	98
REFERENCES	106



ARBUTUS - *East Sooke Regional Park, Vancouver Island*
PHOTO BY: James R. Page
FLICKR PROFILE: wild prairie man

vision for regional parks

Capital Regional District (CRD) parks and trails secure the region's ecology and quality of life by establishing, in perpetuity, an interconnected system of natural lands. Parks protect and restore our region's biodiversity, offer-compatible outdoor recreation and education opportunities and accessible, nourishing, joyful connection with the natural world and our cultural heritage. Regional trails connect communities and provide many outdoor recreation opportunities and an alternate non-motorized transportation network. Parks and trails support the health of our region, its inhabitants and the planet as a whole.

In this century, regional parks and trails will become part of a larger integrated and connected system of natural areas. Subscribing to the idea that "nature needs half", policies and actions are explored through sustainability planning to significantly enhance the system of natural areas in the region in order to sustain life supporting ecological processes. By conserving at least half of the Capital Region's land and water base for nature, residents may live and work in harmony with the environment.



HEERMANN'S GULL - *East Sooke Regional Park*

PHOTO BY: Bill Irvine

FLICKR PROFILE: wjis21

Elaboration of the Vision: Nature Conservation & Connecting People with Nature

Regional parks and trails are part of a mosaic of municipal, provincial and national protected areas in the capital region and form important natural links between adjoining regional districts and the southwest coast of British Columbia (BC). They are the storehouse of the past, and, more importantly, hold the promise of a healthy future. From the pristine San Juan River valley, the historic Sooke flowline and the rugged wilderness of the Sooke Hills to the wildflowers of Galiano Island's

Matthews Point, the CRD stewards an incredible variety of landscapes. Parks and trails contribute immensely to making the CRD one of the healthiest places in the world in which to live. Residents are passionate about the environment, preserving open space, participating in outdoor recreation and learning about the natural world. Parks and trails are interwoven into the daily lives of residents and the built environment, not set apart. They contribute to health, happiness and a sense of renewal; they are integral to creating a connection with nature.

The CRD is situated within the traditional

territory of many First Nations. The relationship of First Nations with the land has deep historical, cultural and spiritual roots. Regional Parks seeks to understand First Nation issues and work toward finding common ground between the goals of Regional Parks and First Nations.

Southern Vancouver Island is facing a momentous period in its history. Rich cultural heritage and an abundance of wild lands characterize the past. Shaping the future is the need for quick action in acquiring increasingly threatened or disappearing ecosystems, many of which are at the northern extreme of their range and not found elsewhere

MOUNT WORK REGIONAL PARK - *One of our largest regional parks, Mount Work includes three lakes, 11 km of hiking trails and a separate mountain-biking area*

PHOTO SOURCED FROM CRD IMAGE LIBRARY.



in Canada. There exists a pressing obligation and responsibility to make continued expansion of protected areas an important goal. Determined, timely action is required in order to secure the lands upon which the local wellbeing and quality of life depend.

To preserve and connect the most meaningful places in the region as a whole, it is important to focus on biodiversity as a guiding principle when making acquisition, management and restoration decisions. Cultivating biodiversity—the diversity of living things in composition, structure and function—is the key to ecological integrity

and broad biological health. Partnerships and coordination with other park, trail and private landowner stewards will help ensure the enactment of this principle. The conservation of biodiversity is a way to support climate actions, healthy watersheds, non-motorized transportation networks, education and economic opportunities. By cultivating these principles, Regional Parks will buffer against the challenges of urban and suburban growth, physically connect regional parks through protection of contiguous areas and steward native species and habitats for their local and global significance.

This region is poised to move forward to the next level of environmental understanding and ecological stewardship. For the Garry oak meadows and coastal Douglas fir forests, for the salmon bearing streams and the green lakes of the Highlands, this vision offers a future that will see parks and trails act as an ecological storehouse. Thus will the region be sheltered from unbridled growth and ecosystems be safeguarded—unharmful, woven into the cultural fabric and cherished for all time.

SATIN FLOWER - *Mount Wells Regional Park*
PHOTO BY: Robin Robinson
FLICKR PROFILE: robinnestrige



the mission of regional parks

The mission defines the fundamental purpose of Regional Parks, describing: why it exists, what it does, and the level of performance to be met or surpassed. The mission of Regional Parks is to:

1. Establish and expand a diverse and connected system of regional parks that protect the region's biodiversity, varied ecosystems and landscapes.
2. Establish and expand a regional trails system that connects communities of the capital region and connects the CRD to the Cowichan Valley Regional District and to Metro Vancouver.
3. Manage the regional parks and trails system as a whole and as part of a network of parks and trails in the CRD.
4. Conserve and restore parklands so that they retain their ecological and cultural integrity.
5. Provide a range of compatible and accessible non-motorized outdoor visitor experiences and activities, for people of all ages and abilities, throughout the regional parks and trails system that foster enjoyment of and appreciation and respect for the region's natural environment.
6. Provide the necessary facilities and services for safe and enjoyable use of regional parks and trails.
7. Practice and facilitate wise stewardship of ecological and cultural values through the use of best management practices and a planned, scientific and precautionary approach, with targeted protection and enhancement actions.

8. Minimize the impact of facilities and visitor use on the ecological and cultural integrity of the parks.
9. Provide leadership to help guide the development of planning policy that affects Regional Parks' ecological and outdoor recreation interests. In addition, serve as a leading advocate for the protection of the region's green and blue spaces through participation in the preparation of the Regional Sustainability Strategy.
10. Integrate the interests of First Nations in park management.
11. Contribute to the regional economy.
12. Work in partnership to accomplish the vision for Regional Parks.
13. Engage residents of the CRD and visitors to regional parks and trails in park planning and management in open and inclusive processes.
14. Provide environmental and cultural interpretation that focuses on the visitor's relationship to nature, natural processes, ecology, the value of natural conditions, and the cultural history and stories of the parklands and trails.
15. Provide information to parks and trails visitors about the ecological and cultural values of the parklands and trails, visitors' role in park stewardship, and the connection of how regional parks and trails help achieve the CRD's Strategic Plan and Regional Sustainability Strategy.
16. Integrate the transportation function of regional trails into planning and operating the trails.



JORDAN RIVER REGIONAL PARK RESERVE - Sandcut Beach, a longtime favourite beach for CRD residents, was acquired by the CRD and its partners in 2010.

PHOTO BY: Rachael Griffin
FLICKR PROFILE: Aqua Green

overview of the regional parks strategic plan

2012—2021

Planning for the Health of Regional Parks & Trails, Ecosystems and Residents of the Region

In 2009, the CRD Board approved a process to prepare a ten-year strategic plan for Regional Parks. This planning work is critical as the last ten years have seen rapid suburban growth, the acquisition of 4500 hectares for regional parks, development of the E&N Rail Trail, and visits to regional parks and trails topping 5 million. Population growth is anticipated to continue, with projections forecasting an increase of 111,000 people by 2038, for a total regional population of 475,000. If

suburban development continues unchecked serious consequences for the health of our environment and residents will result. Regional Parks needs to focus on building a strong foundation over the next ten years. A longer term plan is required in order to prepare for the future in this region where parks are increasingly valued for their ecological goods and services and regional trails are valued as primary transportation routes.

A major part of the process to prepare the Regional Parks Strategic Plan was the establishment of a the Citizen Advisory Panel (CAP).

THETIS LAKE REGIONAL PARK - *Trail rider for people with disabilities.*

PHOTO BY: Gerry Graham



This plan represents the work of the CAP over the past 18 months. It is based on what the CAP heard from the community, interest groups and other park agencies in the spring of 2010 and 2011 and learned from the review of technical information.

The Strategic Plan provides a long-term vision for regional parks and trails – a vision that looks out to the end of this century. This ten-year strategic plan represents the first step along that path. The plan builds on the success of the Regional Parks 2000 Master Plan. It is founded on the belief that regional parks and

trails provide immense benefits to the region and that it is necessary to plan today to protect those natural areas that are vital to the long-term health of the region’s natural environment and the health of the people who live here. This long-term and present-day perspective underpins the entire Strategic Plan.

The highlights of the plan are:

- Confirmation that Regional Parks is on the right track and that nature protection is Regional Parks’ top priority.

- Conserving biodiversity, connecting natural areas, and providing compatible recreation opportunities for people of all ages and abilities to experience regional parks and trails are the centerpieces of the plan.
- The plan advocates for compatible recreation activities in regional parks and trails that fills the gaps in the current system, connects communities and addresses the needs of existing and changing demographics.
- Environmental interpretation and communication are essential functions of Regional Parks and the CRD as a whole.



E&N RAIL TRAIL - Built within the existing E&N rail corridor, the "Rail-With-Trail" will meander through developing communities and urban settings.

PHOTO SOURCED FROM CRD IMAGE LIBRARY

- The need to deliver education and activity programs that engage families and youth, and connect them to regional parks and trails.
- The vision presented in this plan sees at least half of the region's land and water base managed for the conservation of nature. This is a region wide strategic issue to be discussed in the preparation of the Regional Sustainability Strategy.
- To accomplish the proposed regional parks and trails system shown on map 4, substantial progress is needed over the next

25 years to achieve it. In addition, regional integrated land and water use planning is necessary to plan and manage connectivity in order to maintain life-supporting natural systems across the region.

- The proposed regional parks and trails system presents two key concepts; (1) a connected system of natural areas throughout the region and with emphasis on potential regional park areas west of the Sooke River, and (2) a regional trails system that would enable people to walk the length of the region, ride a horse for

long distances or cycle for commuting and recreation on paved trails.

- To maintain the direction from the previous master plan that off-road motorized use is not compatible with the vision and mission of regional parks and trails. Off-road motorized use has high recreational value in the region and needs designated spaces outside of regional parks. This could be achieved through partnerships with public and private land managers in the region. The CRD could take a lead role to facilitate these potential partnerships.

EASTERN TRILLIUM - *Trans Canada Trail,
Vancouver Island*
PHOTO BY: Bill Irvine
FLICKR PROFILE: wjis21



- Six strategic priorities are identified that would guide the work of Regional Parks over the next five years and include:
 1. Strengthen the management of existing parks and trails.
 2. Strategically plan for and open existing land banked park reserves and trails as resources are approved.
 3. Strengthen community involvement, education and partnerships.
 4. Prepare for future land acquisitions.
 5. Promote the health benefits of regional parks and trails.
 6. Engage in planning for regional sustainability.
- Other highlights include the preparation of a financial plan as a supplementary document to the Strategic Plan to guide Regional Parks financial management over the next five years and begin preparing for Regional Parks 50th anniversary in 2016.

PART ONE

1 overview of the capital regional district

GALLOPING GOOSE REGIONAL TRAIL - *This picturesque multi-use trail, formerly a railway line, moves through urban, rural and wilderness scenery on its 55 kilometre journey from Victoria to Sooke.*

PHOTO BY: Paul Rioux
FLICKR PROFILE: Paul Rioux

Planning for the future of regional parks and trails is a strategic function that Regional Parks carries out approximately every 10 years. Past planning efforts have influenced where Regional Parks is today – from establishing the first four regional parks in 1966, to proposing a system of regional parks and trails and defining policies to manage regional parks in 1987, to establishing the Land Acquisition Fund in 2000 and acquiring significant new park and trail lands.

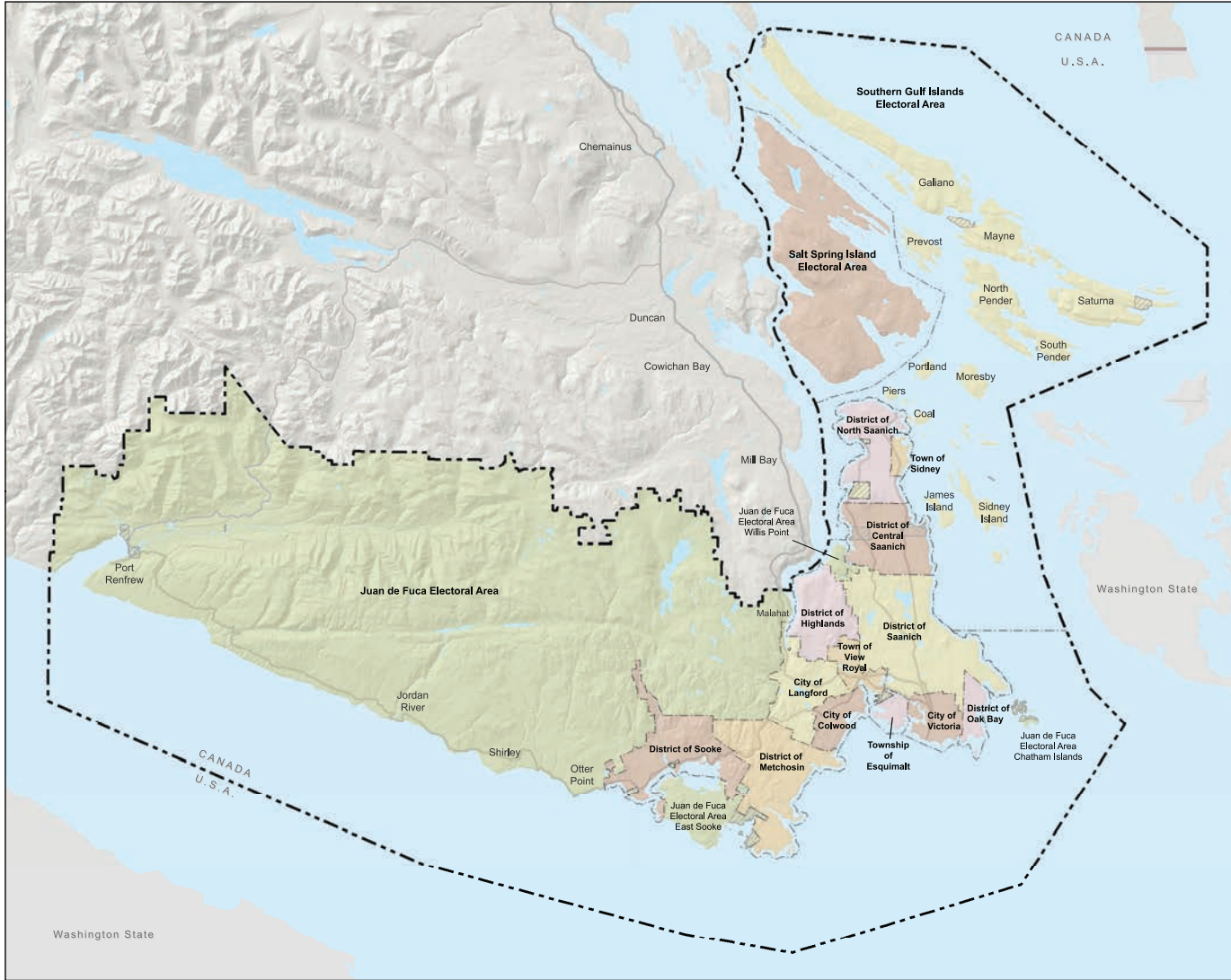
1.1 administrative setting

The Capital Regional District (CRD) is one of 28 regional districts in British Columbia. The CRD is regional government for the 13 municipalities and three electoral areas that are located on the southern tip of Vancouver Island. The CRD covers an area of 245,000 hectares and extends from Port Renfrew in the west, to the southern slopes of the Malahat, from Victoria to the Saanich Peninsula and the Southern Gulf Islands (see Map 1).

The mission of the CRD is: diverse communities working together to better serve public interest and build a liveable, sustainable region.

Since 1966, Regional Parks has been one of the services provided by the CRD. Regional parks and trails complement other parks and recreation services provided by municipalities, electoral areas and the provincial and federal governments. Regional Parks is governed by the CRD Board through the Regional Parks Committee.

The region owns nearly 48,000 hectares of land through the Parks and Community Services and Integrated Water Services departments, which together deliver many services and programs that address



Capital Regional District

Map 1 Administrative Boundaries



Capital Region Municipalities

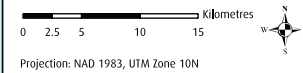
City of Victoria	District of Oak Bay
District of Saanich	Town of Sidney
Township of Esquimalt	Town of View Royal
District of Central Saanich	City of Colwood
District of North Saanich	District of Highlands
City of Langford	District of Metchosin
District of Sooke	

Unincorporated Areas

- First Nation Reserves
- Juan de Fuca Electoral Area
- Salt Spring Island Electoral Area
- Southern Gulf Islands Electoral Area



Please visit us on-line for more information:
<http://www.crd.bc.ca> | gis@crd.bc.ca



DISCLAIMER
Important: This map is for general information purposes only. The Capital Regional District (CRD) makes no representations or warranties regarding the accuracy or completeness of this map or the suitability of the map for any purpose.
This map is not for navigation. The CRD **will not be liable** for any damage, loss or injury resulting from the use of the map or information on the map and the map may be changed by the CRD at any time.

June 2011 | Map_1_CRD_Administrative_Boundaries.mxd

1.2 the physical setting

regional, environmental, social and economic sustainability, thereby playing a significant role in overall land and resource management in the region.

The CRD encompasses a unique area in Canada, with a complex geography and climate that includes a diverse range of ecosystems. Ecologically, the CRD is located within three biogeoclimatic zones: Coastal Douglas-fir (CDF), Coastal Western Hemlock (CWH) and Mountain Hemlock (MH) (see Map 2). The CDF covers 72,825 hectares (30.5 percent of the region), the CWH covers 160,735 hectares (68 percent of the region) and MH covers 3475 hectares (1.5 percent of the region).

The intersection of intense development pressure and unique ecosystems has made the CRD one of Canada's focal points of conservation concern. Protected areas, including land set aside for conservation purposes by park agencies and land trusts, are quickly becoming the only remaining areas of natural habitat within the developed landscape of the CRD. This fact underscores the critical importance of on-going, appropriate stewardship of acquired lands to protect and restore native biodiversity over the long-term.¹ Regional parks play a critical role in helping protect these conservation values.

Capital Regional District




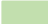
Map 2

Biogeoclimatic Zones in CRD



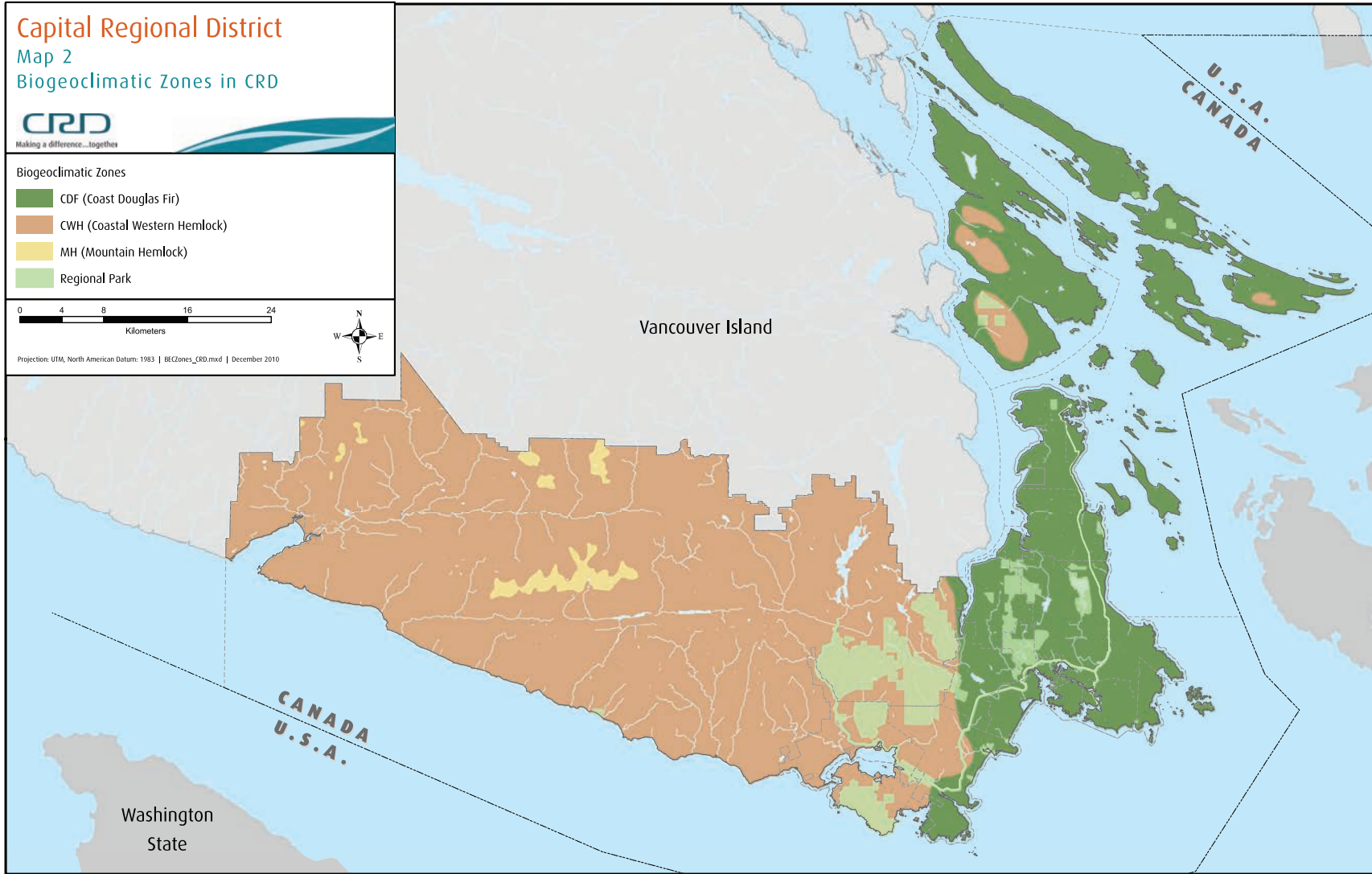
Making a difference...together

Biogeoclimatic Zones

-  CDF (Coast Douglas Fir)
-  CWH (Coastal Western Hemlock)
-  MH (Mountain Hemlock)
-  Regional Park



Projection: UTM, North American Datum: 1983 | BECZones_CRD.mxd | December 2010



map 2

HAIRY WOODPECKER - *Found along a deep forest trail near Roche Cove.*

PHOTO BY: Julie Macdonald
FLICKR PROFILE: TT_MAC



Several ecosystems in the CDF zone have been recognized as globally imperilled, and this zone contains some of the most endangered ecosystems in Canada.² The zone is home to 24 species that are of global conservation concern, as well as 35 ecological communities and 218 wildlife and plant species that are provincially at risk. Historic and current development pressures have had and continue to have significant negative impacts on the biodiversity of this zone. Considerable effort will be required to maintain and restore biodiversity values here. The major threats to biodiversity are residential and commercial development, biological resource uses and invasive species.

Both the CWH and MH zones are located in the western part of the CRD, which has been significantly affected by resource extraction over the last 100 years. Protecting the remaining older forests and intact watersheds is a priority.³

The Nature Conservancy of Canada has prepared a conservation plan (the Salish Sea Natural Area Conservation Plan) for about half of the area in the CRD, excluding the area generally west of Sooke. The Plan identified nine biodiversity targets such as Garry oak and arbutus ecosystem protection.

1.3

the CRD regional sustainability strategy

The Regional Growth Strategy (RGS) is the CRD's long-term growth management plan that addresses regional issues such as transportation, population change, settlement patterns and resource management. The RGS was adopted by the region and accepted by member municipalities in 2003. The strategy oversees the Growth Management Planning Area (GMPA), which includes all 13 municipalities and the Juan de Fuca Electoral Area (over 192,600 hectares on Southern Vancouver Island).

The RGS promotes the long-term livability of the region and seeks to optimize social, economic and environmental performance. It is now being updated as part of the 5-year review process and will be revised as the region's sustainability strategy. The Regional Sustainability Strategy (RSS) will build on the base of the RGS, increasing its scope to provide leadership and direction on climate action, social well-being and food security, in addition to its current topic areas.

Sustainability embraces the long-term commitment to preserving and revitalizing natural systems, fostering social resilience and community well-being and generating ongoing prosperity and affordability. These sustainability principles are at the core of the CRD's vision for the future and form the foundation of the RSS. The RSS will set out a series of strategies and actions for the region, providing the over-arching policy framework to achieve desired outcomes. The Regional Parks Strategic Plan is out in front of the process and will be recognized in the RSS as a key strategy for protecting the natural environment.

Following strong evidence and efforts elsewhere in the world, the CAP believes that at least half of the land and water in the region be managed for the conservation of nature. This is a region wide strategic issue which needs to be considered in light of environmental, social and economic interests. This vision can be accomplished using a variety of conservation methods, including graduated forms of protection, and through the collaboration of a wide

range of private, public and First Nations partners. Regional parks and trails and other protected areas in the CRD would serve as the core of this larger proposed network.

The CAP recommends that this visionary concept be integrated into the preparation of the Regional Sustainability Strategy.

figure 1: how regional parks contributes to achieving regional sustainability

ENVIRONMENTAL



ECONOMIC



SOCIAL



1.4 the role of parks & trails in the region

The regional parks and trails network is part of a spectrum of parks and protected areas located across the region. These parks serve a range of recreational, ecological, green space and amenity purposes. Trails serve both a transportation and recreation function. Various land trusts also own or have rights to land for conservation purposes. The range of parks, trails and conservation lands across the CRD is presented in Map 3 and Table 1. This land accounts for 27,277 hectares, or 11 percent of the region's land base.

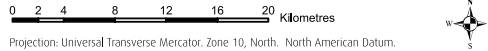
table 1: CRD land base under park or protected area status and within the greater victoria water supply area (as of March 12, 2012)

JURISDICTION	HECTARES	% OF CRD LAND BASE
National Parks	4,127	1.70
Provincial Parks and Ecological Reserves	6,501	2.65
Regional Parks	12,763	5.17
Municipal Parks	1,993	0.81
Islands Trust Fund	1011	0.40
Land Trusts	882	0.30
Total Park and Protected Area	27,277	11.03
Greater Victoria Water Supply Area	20,549	8.4
Total	47,826	19.43

Capital Regional District
Map 3
Parks and Protected Areas in CRD

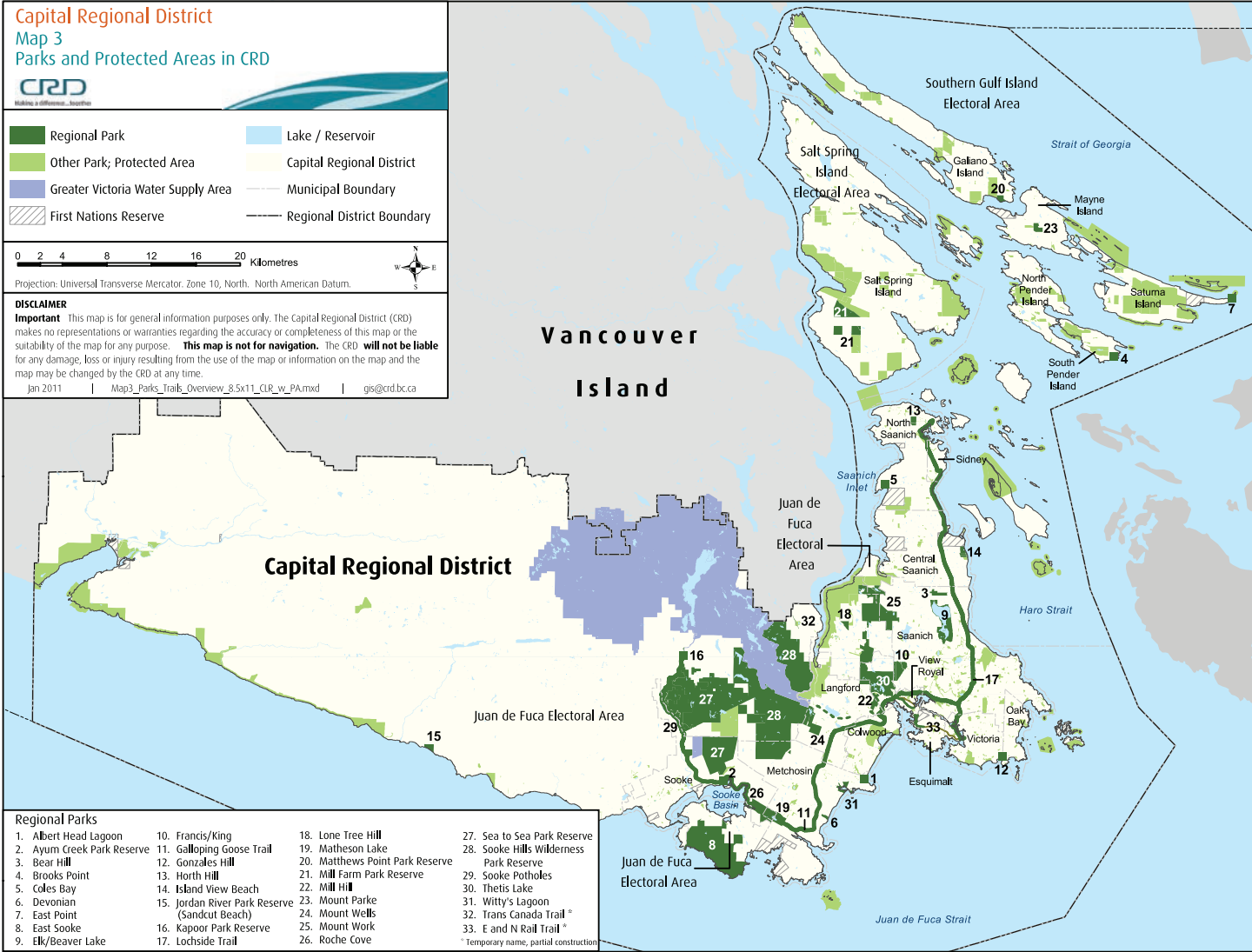


- Regional Park
- Other Park; Protected Area
- Greater Victoria Water Supply Area
- First Nations Reserve
- Lake / Reservoir
- Capital Regional District
- Municipal Boundary
- Regional District Boundary



DISCLAIMER
Important This map is for general information purposes only. The Capital Regional District (CRD) makes no representations or warranties regarding the accuracy or completeness of this map or the suitability of the map for any purpose. **This map is not for navigation.** The CRD **will not be liable** for any damage, loss or injury resulting from the use of the map or information on the map and the map may be changed by the CRD at any time.

Jan 2011 | Map3_Parks_Trails_Overview_8.5x11_CLR_w_PA.mxd | gis@crd.bc.ca



- | | | |
|----------------------------|---|---|
| Regional Parks | | |
| 1. Albert Head Lagoon | 10. Francis/King | 18. Lone Tree Hill |
| 2. Ayum Creek Park Reserve | 11. Galloping Goose Trail | 19. Matheson Lake |
| 3. Bear Hill | 12. Gonzales Hill | 20. Matthews Point Park Reserve |
| 4. Brooks Point | 13. Horth Hill | 21. Mill Farm Park Reserve |
| 5. Coles Bay | 14. Island View Beach | 22. Mill Hill |
| 6. Devonian | 15. Jordan River Park Reserve (Sandcut Beach) | 23. Mount Parke |
| 7. East Point | 16. Kapoor Park Reserve | 24. Mount Wells |
| 8. East Sooke | 17. Lochside Trail | 25. Mount Work |
| 9. Elk/Beaver Lake | | 26. Roche Cove |
| | | 27. Sea to Sea Park Reserve |
| | | 28. Sooke Hills Wilderness Park Reserve |
| | | 29. Sooke Potholes |
| | | 30. Thetis Lake |
| | | 31. Wittly's Lagoon |
| | | 32. Trans Canada Trail * |
| | | 33. E and N Rail Trail * |
- * Temporary name, partial construction

table 2: comparison of park agencies in the CRD

	NATIONAL PARKS	PROVINCIAL PARKS, PROTECTED AREAS & ECOLOGICAL RESERVES	REGIONAL PARKS	MUNICIPAL/ELECTORAL AREA PARKS	ISLANDS TRUST FUND
GEOGRAPHIC FOCUS	Canada	British Columbia	Capital Regional District	Municipal/Electoral Area Boundaries	Gulf Islands
SIZE OF PARK AREA	Generally very large	Large (e.g., one million hectares) to small (e.g., 10 hectares)	7,000 hectares to five hectares	Generally small (e.g., 100 hectares to less than one hectare)	1011 hectares protected in 80 properties
PURPOSE/VISION	<p>Fulfill national and international responsibilities in heritage recognition and conservation.</p> <p>Commemorate, protect and present places that are significant examples of Canada’s cultural and natural heritage.</p> <p>Encourage public understanding, appreciation and enjoyment of this heritage, while ensuring long-term ecological and commemorative integrity.</p>	<p>BC Parks are parks, protected areas and conservation land held as a public trust.</p> <p>The mission is to protect representative and special natural places within the Province’s Protected Areas System for world class conservation, outdoor recreation, education and scientific study.</p>	<p>Regional parks protect natural areas that define the geography of the CRD.</p> <p>Provide opportunities for non-motorized outdoor recreation experiences and activities for residents of the region.</p> <p>Regional trails provide a transportation route for commuting or recreation on designated corridors, and habitat for wildlife and plants.</p>	<p>Local parks, trails and pathways, playgrounds, natural areas, ecologically significant areas, altered landscapes</p>	<p>Protecting in perpetuity the native species and natural systems of the islands.</p> <p>Engaged residents and conservation partners work together to protect large natural areas and key wildlife habitat.</p> <p>Viable ecosystems flourish alongside healthy islands communities.</p>
TYPE OF PARKS	<p>National Parks</p> <p>National Historic Parks</p> <p>National Marine Conservation Areas</p>	Wilderness, large natural areas, conservation, hiking trails, campgrounds	Conservation, wilderness, natural area, outdoor recreation parks	Sports fields, playgrounds, recreation centres, trails, nature parks	Natural areas and covenants on private land
FUNCTION OF PARKS AND TRAILS	Natural areas, ecological significance, important habitat for plants and animals	Natural areas, ecological significance, important habitat for plants and animals, outdoor recreation.	Natural areas, ecological significance, important habitat for plants and animals	Trails and pathways that connect the region’s communities and adjacent regional districts	Natural areas, ecologically significant habitats for plants and animals
TARGET AUDIENCE	Canadians and tourists	Residents of the province and tourists	Residents of the CRD and tourists	Residents in neighbourhoods and the municipality	Gulf Island Residents and Tourists



WITTY'S LAGOON REGIONAL PARK - *Regional Parks staff help youth understand the marine environment.*

PHOTO SOURCED FROM CRD IMAGE LIBRARY

At one end of the spectrum are local parks and trails managed by municipalities or one of the three electoral areas. The primary role of these parks and trails is to provide amenities and green space for residents within the municipality or electoral area. This includes facilities for organized sports, recreation centres and playgrounds. It also includes land for green and open space, protection of the natural environment and outdoor recreation and trails. These areas are integrated into the urban and suburban land-use pattern. At the other end of the spectrum are national parks.

In between are provincial and regional parks and lands held by the Islands Trust and other land trusts. A comparison of the functions among the various park systems is presented in Table 2.

Comprising 51 percent of all the protected land in the capital region, regional parks are the core of the protected areas system in the CRD. At 110 kilometres (km), the regional trails system is the primary arterial trails system in the region, serving both recreational users and commuters. It is also recognized as part of the primary inter-

COMBINING PARKS, PROTECTED AREAS AND LAND WITHIN
THE GREATER VICTORIA WATER SUPPLY AREA THE TOTAL
LAND PROTECTED IS **47,826** HECTARES
OR **19.4** PERCENT OF THE REGION'S LAND BASE.

community cycling network as identified in the region's Pedestrian and Cycling Master Plan. In 2010, an estimated 5 million visits were made to regional parks and trails.

1.4.1 Greater Victoria Water Supply Area

In addition to parks and protected areas, the Greater Victoria Water Supply Area, managed by CRD Integrated Water Services, also contributes to the protection of ecological integrity and biodiversity in the region. The Water Supply Area is closed to public access, managed to protect the quality and supply of drinking water for Greater Victoria, and compatible environmental values. The Water Supply Area also contributes to the protection

of the Sea to Sea Regional Green-Blue Belt and provides ecological connectivity with existing regional and provincial parks.



WITTY'S LAGOON - *low tide at the entrance to Witty's Lagoon.*

PHOTO BY: Terry Tuk
FLICKR PROFILE: TT_MAC

In 2016, Regional Parks will celebrate its 50th anniversary. Over the past five decades, residents, groups and all levels of government have worked together to set aside 13,000 hectares of land for regional parks and trails. The role of Regional Parks is based on two fundamental principles: caring for the natural environment and ensuring that compatible access is provided for people to enjoy and experience these lands.

2 background to preparing the regional parks strategic plan

Whether one lives in, works in or is visiting the capital region, regional parks and trails are valued by all – commuters cycling along the Galloping Goose Trail, visitors hiking the Coast Trail in East Sooke, families picnicking at Elk/Beaver Lake, a couple watching killer whales in Boundary Pass from Gowlland Point, or a resident in downtown Victoria looking west to the hilltops in the Sea to Sea Green Blue Belt that runs from Saanich Inlet to Sooke

Basin. Regional parks and trails are community treasures that are a part of everyday life. They protect the natural environment, add immeasurably to the quality of life enjoyed in the capital region, and are vital to personal health and the health of the local environment. They are a gift to future generations.

2.1

purpose & goals for preparing the strategic plan

The Regional Parks Strategic Plan serves two purposes:

- To plan fundamental organizational decisions for 2012 to 2021: what the organization does, why it does it, what are the most important opportunities and challenges to which the organization needs to respond, and what the right actions are to move the organization forward.
- To engage citizens, First Nations, governments, CRD Directors and Regional Parks volunteers and staff in the process



MILL HILL REGIONAL PARK - *Hike on trails that meander past a Douglas-fir forest, a Garry oak ecosystem and a rocky hilltop.*

PHOTO SOURCED FROM CRD IMAGE LIBRARY

of preparing the Strategic Plan, in an open and inclusive way, by collaborating with, informing, consulting and involving them.⁴

The goals of preparing the Strategic Plan are to address the:

- values associated with Regional Parks;
- contribution of Regional Parks to the social-cultural, economic and environmental sustainability of the region;
- challenges facing Regional Parks;

- vision and mission for Regional Parks;
- link between the Regional Parks Strategic Plan and other CRD initiatives, such as the Regional Sustainability Strategy, Climate Action Program, transportation planning and watershed protection;
- future regional parks and trails system, and how this system will be integrated with other parks and trails systems and other natural lands in the region;

- goals that will be used to help guide the management of regional parks and trails; and
- priorities for the next ten-years.

The Strategic Plan provides a long-term vision for regional parks and trails – a vision that extends to the end of this century. It is based on the projection that there will be an increase of approximately 111,000 people living in the capital region over the next 30 years, and many more by the end of the century. This anticipated population growth means it's more important than ever to protect the natural

SANDCUT FALLS - *Sandcut Creek empties onto the gravel at Sandcut Beach.*

PHOTO BY: Bryn Tassell
FLICKR PROFILE: Bryn Tassell

environment and provide space for outdoor recreation. The Strategic Plan is founded on the belief that it is necessary to plan today to protect those natural areas that are vital to both the current and the long-term health of the region's natural environment and the health of residents. This dual long-term and present-day perspective underpins the entire Strategic Plan.

The Strategic Plan also establishes a set of management goals that define the long-term, "big picture" framework within which policy, fiscal, administrative and strategic decisions

will be made. In this way, the plan will help Regional Parks do three important things: (1) ensure that everyone is working in the same direction, (2) focus energies, and (3) provide the flexibility needed to be able to respond effectively to changing circumstances.



2.2

the CRD regional parks master plan (2000)

Planning for regional parks and trails in the capital region has been done for the last 50 years. Each plan has influenced the next and helps define where Regional Parks is today. The current Strategic Plan builds on the CRD Regional Parks Master Plan (2000) (hereafter referred to as Master Plan) adopted by the CRD Board in 2000. That Master Plan, which had a ten-year timeframe, presented a system-wide scope for the future of regional parks and trails and accordingly did not address park-specific management or operational issues. The plan provided a vision for Regional Parks, a statement

of purpose for the parks and trails, a map of the proposed system of regional parks and trails, guidelines for managing regional parks and trails, and an implementation strategy that included strategic directions for the department.

The Master Plan had a major influence on shaping regional parks and trails that are in place today. It helped guide the stewardship of the natural environment, connect people to the land, and provide opportunities for residents, community organizations, and other levels of government to partner with Regional Parks to achieve the vision.

The key results of the Master Plan were:

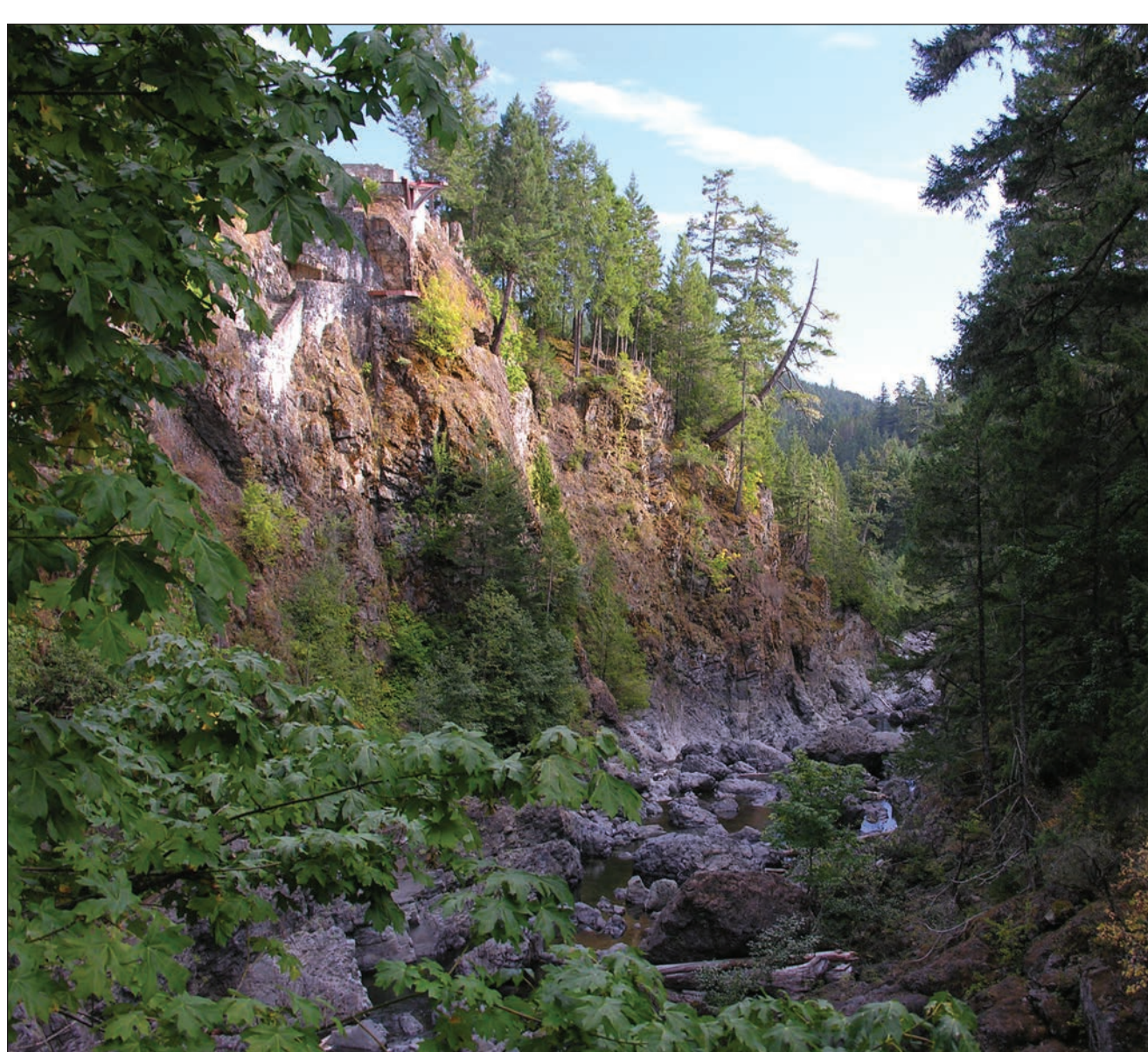
- establishing the Regional Parks Land Acquisition Fund;
- acquiring 4,480 hectares of land;
- partnering with land trusts, other levels of government, and landowners to acquire land whereby the CRD contributed 66 percent of the funds and partners contributed 34 percent;
- an increase in the number of volunteers involved in environmental protection;

WITTY'S LAGOON REGIONAL PARK - Forested trails, a species-rich lagoon and a long sandy beach make this park a frequent destination for locals and tourists to our region.

PHOTO BY: Rachael Griffin
FLICKR PROFILE: Aqua Green

- completing management plans for Lochside Regional Trail and Sooke Potholes, Ayum Creek, Kapoor, Thetis, Francis-King, Mill Hill, Sea to Sea Green Blue Belt, Sooke Hills Wilderness and Brooks Point regional parks;
 - restoring the nationally endangered Garry oak ecosystem in Mill Hill Regional Park;
 - establishment of the Lochside Regional Trail;
 - initiating development of the E&N Rail Trail;
 - completing 90 percent of the Sea to Sea Green Blue Belt boundary; and
 - opening a new regional park at Sooke Potholes.
- Building on the success of the previous decade, Regional Parks now needs to set a direction for the coming years and through to the end of this century.
- In preparing this plan, the term “Master Plan” has been changed to “Strategic Plan” to more accurately reflect the intent of the document: a master plan tends to be associated with a land-use plan for the development of an area; a strategic plan is a management tool to address fundamental and long-term organizational decisions and actions.





SOOKE POTHoles REGIONAL PARK - *This park is named for the unique pool-like river formations that make enchanting swimming holes.*

PHOTO BY: Robin Robinson
FLICKR PROFILE: [robinnestridge](#)

2.3

how the strategic plan was prepared

Terms of Reference approved by the CRD Board in 2009 guide the Regional Parks three-stage process in preparing the Strategic Plan, per Figure 2.

The comments received in stage 1 and 2 are documented in two reports which are available from Regional Parks⁵. These comments influenced preparation of the plan and the key messages are woven into the Strategic Plan.

figure 2: strategic planning process



2.4

Lessons in regional park planning & management from around the world

Parks are found throughout the world. They are established and maintained to protect significant international, national, regional and local lands and water, buffer the impact of urban development on people, and provide areas for people to experience nature and enjoy outdoor recreation. Some well-known examples include Banff National Park in Canada; the Lake District National Park in Great Britain; the Grand Canyon National Park in the United States; the Great Barrier Reef National Marine Park in Australia; regional parks in Metro Vancouver, Metro Portland,

Boulder County Colorado and Auckland, New Zealand; and urban parks such as Stanley Park in Vancouver, Central Park in New York, Hyde Park in London, England, and Beacon Hill Park in Victoria. Parks contribute to the protection of the natural environment, mitigating the loss of global biodiversity. They provide spaces where people can escape from the built urban landscape, connect with nature, participate in recreation, and come together with family and friends. Not least, parks generate employment and income through compatible tourism.

The International Union for the Conservation of Nature (IUCN) has identified urban and suburban growth as one of the most significant threats to biodiversity and the health of the environment and people. In 2002, the IUCN established the Cities and Protected Areas program to address the need for protected areas in and around cities. This work recognizes that regions and cities have a significant role in the global effort to protect and manage vulnerable ecosystems. The challenge is how to build and manage regions within nature, rather than in opposition to it. The planning

BROOKS POINT REGIONAL PARK - *Located on Pender Island, Brooks Point is an oceanfront park featuring an intertidal rocky shore and beach, meadow and commanding views.*

PHOTO SOURCED FROM CRD IMAGE LIBRARY



for protecting and conserving biodiversity and connecting people to these areas needs to be integrated into regionally sustainable practices. There exists a unique opportunity in the CRD to accomplish this. The region has a unique and diverse natural environment and a long-standing commitment to greenspace protection.

Another key international initiative is the Healthy Parks—Healthy People program in New Zealand, Australia, Great Britain and Canada. The key messages from this initiative are that the environmental health of parks

results in a healthy community, and spending time in a well cared for park environment leads to greater health and fitness for individuals.

There is a clear call, from people who live in cities and regions throughout the world, to establish parks. These parks improve, protect and sustain a healthy natural environment and contribute immensely to the overall wellbeing and health of people. In many areas, regional parks are part of the fabric of urban and regional land use and are essential ‘green infrastructure’. Parks play a critical role in conserving what is left of dwindling urban

and regional biodiversity, as they contribute to ecological and human health.

In North America, the growth in parks and trails has been especially significant at the county and regional level. This has come in response to the negative impact that regional growth has had and continues to have on spaces and places that people call home – areas they visit as part of their everyday life, and with which they have a deep connection. These are also important natural ecological areas, home to animals and plants, which help conserve the planet at a local level.



FRANCIS KING REGIONAL PARK - *Elsie King accessible boardwalk.*

PHOTO SOURCED FROM CRD IMAGE LIBRARY

OPPOSITE PAGE:
TODD CREEK TRESTLE, GALLOPING GOOSE REGIONAL TRAIL-
This is part of the Trans Canada Trail, a national multi-use
trail system linking trails from coast to coast.

PHOTO BY: H  l  ne Cyr
PHOTO SOURCED FROM CRD IMAGE LIBRARY

The best planning and management practices of leading regional park systems throughout the world indicate that:

- Protecting the natural environment is a primary function of regional parks and is achieved by conserving nature, sustaining the variety of life, protecting the earth's outstanding features and processes, storing carbon and maintaining clean air and water.
- Regional parks build healthy communities by improving physical health, enhancing mental health and wellbeing, and bringing people together.
- Regional parks support science and learning.

- Regional Parks improve our adaptive capacity.
- Regional parks provide many opportunities for non-motorized outdoor recreation.
- Regional parks and trails systems are built on collaboration and partnerships.
- Regional parks provide a buffer to suburban development, protect green space, improve watershed health and are important in defining the land-use pattern in a region.
- Regional parks contribute to the economy by supporting tourism and recreational pursuits and providing direct and indirect employment.

- Regional parks reflect the cultural history of the region.
- Outdoor recreation activities and facilities development should be provided in the context of the protection of the natural environment.
- Protection of the city or regional land base – by non-profit organizations, private landowners and all levels of government, through park, greenspaces and land conservation programs – ranges from 20 to 70 percent.

These best planning and management practices are incorporated into the Strategic Plan where appropriate.



3 the value of regional parks & trails



SEA-STAR

PHOTO BY: Minette Layne

PHOTO SOURCED FROM CRD IMAGE LIBRARY

The value of regional parks and trails to the residents of the capital region is wide-ranging. With time, their importance will only increase, as the stresses of urbanization, population growth, changing demographics, loss of natural areas and biodiversity and climate

change continue to affect the region.

This section highlights the value of regional parks and trails to all residents of the capital region, and the value they contribute to making this area one of the best places to live in the world. This value also influences

the management goals that are outlined in Section 6 of this Strategic Plan.

The value of regional parks and trails is presented under five topics, and graphically in Figure 3.

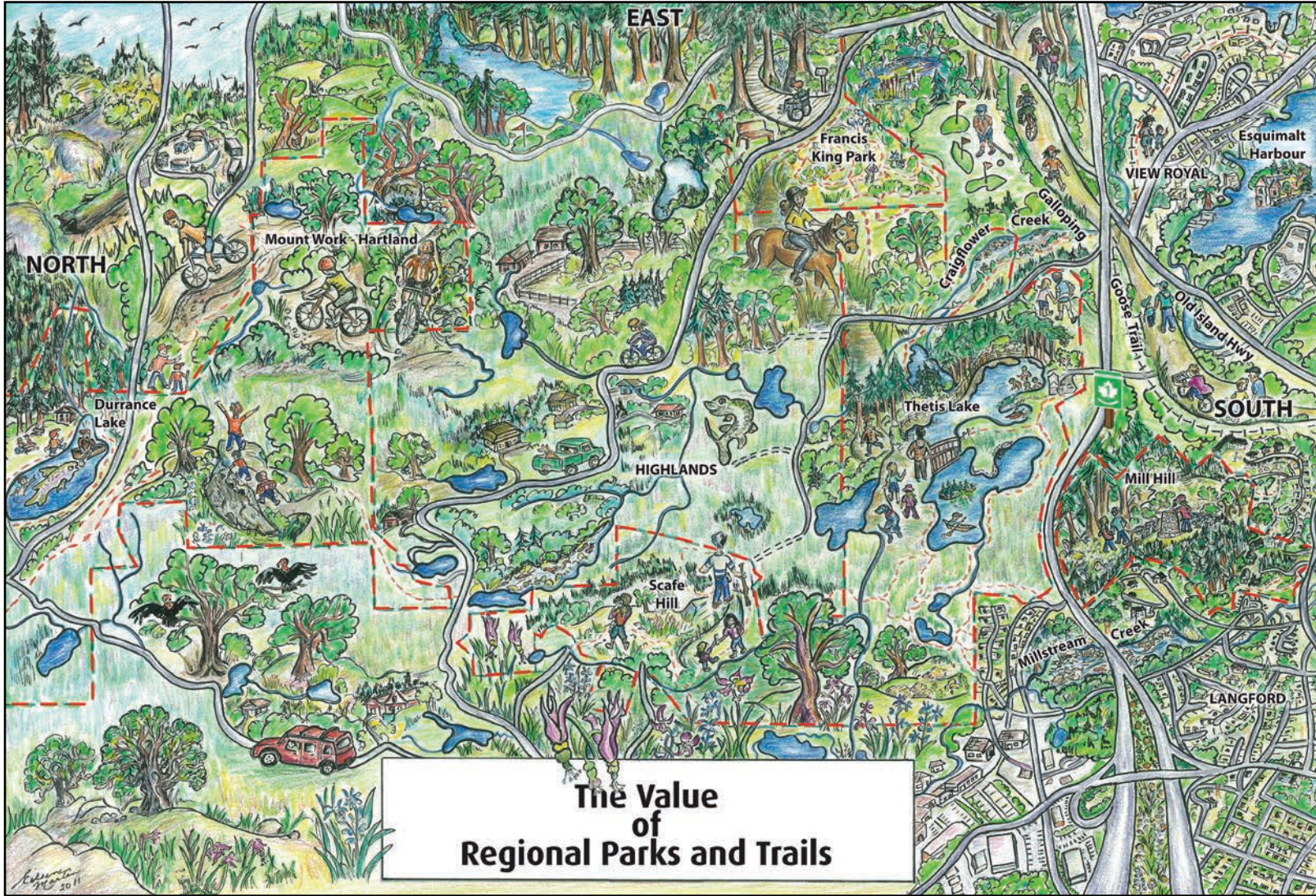


figure 3

3.1

contributing to regional sustainability

Sustainability is the core policy of the CRD, as defined in the CRD Strategic Plan 2009—2011. It is also the basis for the preparation of the Regional Sustainability Strategy.

As ‘green infrastructure’, regional parks and trails are vital components in the environmental, social and cultural, and economic health of the region, and they contribute to sustaining a healthy planet. They are an important resource with which the CRD helps protect the natural world and deal effectively with the pressures of climate change, population growth, urban and

suburban expansion, and the resulting loss of natural areas and the disconnection of people from nature. The value of regional parks and trails in achieving regional sustainability will only increase with time.

3.2

protecting the natural world

The environmental value of regional parks is immense and becomes increasingly significant as the region’s population increases. The parks and trails network protects and conserves ecosystems, landscapes, species and geological features. As climate change and regional growth continue, regional parks will increase in value by protecting carbon-storing vegetation, supporting ecological resiliency and protecting natural areas.

MUTE SWAN - *Albert Head Lagoon Regional Park serves as a wildlife sanctuary and refuge for a variety of birds*

PHOTO BY: Bryn Tassell
FLICKR PROFILE: Bryn Tassell



3.2.1 Conserving Nature

Much of the region's original natural area has been altered or no longer exists. Without parks to protect the remaining habitat or without proper management, parks will become increasingly fragmented and threatened by human settlement and resource use.

Sustaining regional parks for the benefit of people and other living things depends directly on maintaining the long-term environmental health of regional park ecosystems.

3.2.2 Sustaining the Variety of Life

Biodiversity, which is a key measure of ecological health, refers to the totality of genes, species and ecosystems within a region. As natural areas, parks help protect this diversity. Regional Parks will continue to strive to help stem the loss of regional biodiversity in the region. Within 26 of the regional parks and trails in the capital region, at least 59 different nationally and/or provincially listed plant species, 31 animal species, and 12 ecological communities are at risk.⁶

3.2.3 Protecting the Region's Outstanding Features and Landscapes

Regional parks protect significant geographic features and landscapes in the region, such as the Sooke Hills, Sooke River Potholes, Elk/Beaver Lake and Matthews Point. These are icons in the region and they help define the place where we live. These places also engage park visitors in educational and scientific enquiry and introduce them to natural history.



ELK/BEAVER LAKE REGIONAL PARK - *The lake is used cooperatively by swimmers, wind surfers, sailors, water-skiers, fishers and rowers.*

PHOTO SOURCED FROM CRD IMAGE LIBRARY

3.2.4 Maintaining Clean Air & Water

Vegetation cleans and filters water, traps sediment, recycles nutrients, stabilizes slopes and slows runoff. Large expanses of intact vegetation provided by parks protect the receiving environment from water carried contaminants and mitigate the high cost of flooding.

3.2.5 Climate Stabilization

Regional parks are significant assets in mitigating the challenge of climate change. They protect

large areas of native forest that scrub carbon dioxide from the atmosphere. With anticipated changes to our climate and extremes becoming the norm, it will become increasingly important to identify and manage risks and adapt to change. By protecting this valuable ecosystem service we will reduce future costs for the region.

3.2.6 Supporting Science & Learning

Regional parks are important 'outdoor laboratories' for scientific research about how ecological

systems and processes function. Regional Parks receives many requests each year from individuals and groups wanting to conduct ecological research. Regional parks also provide a great outside classroom, where children and adults can learn about the natural environment. Environmental education is a core function of Regional Parks.

3.2.7 Providing Open and Green Space

Regional parks provide open and green space throughout the region. For example, Thetis

MATHESON LAKE - Mist hangs over serene Matheson Lake as a convoy of ducks drifts by.
PHOTO BY: James R. Page
FLICKR PROFILE: wild prairie man

Lake, Francis-King and Mill Hill regional parks create a greenbelt that offers a sense of open space between suburban developments in the City of Langford, the Town of View Royal and the District of Saanich. As the region continues to grow, these green and open spaces will become increasingly important.





ROCHE COVE REGIONAL PARK - *East Sooke, Vancouver Island.*

PHOTO BY: Rachel Grigg
FLICKR PROFILE: Ray L G

3.3 building healthy communities

"Contact with nature enriches our psychological, emotional and spiritual well-being. Parks are places of adventure and challenge, exercise, peace and quiet, recreation, gathering and relaxation. In them, we find a sense of enjoyment, strong community spirit, and wonder in nature. Parks offer a range of recreation activities to bring families and friends together in appealing places."

A healthy regional parks and trails system is a vital component of a healthy local community.

SAN JUAN RIDGE - *Winter recreation opportunities in future regional parks*

PHOTO BY: Tim Conlin



3.3.1 Improving Physical Health

Regional parks and trails offer affordable preventative and remedial opportunities to improve physical health. Walking, hiking, cycling, paddling, rowing, horseback riding and swimming are just some of the activities in parks, on waterways and along trails that are known to improve physical health.

3.3.2 Enhancing Mental Health & Well-Being

Being outdoors and in nature benefits mental health. It can bring greater self-esteem, a better ability to focus the mind, a clearer sense of motivation, and a feeling of being refreshed and alive – an improved overall quality of life.

3.3.3 Bringing People Together

Regional parks, trails, pathways and open

spaces bring families and friends together to have fun, celebrate, experience and discover nature together, or to just relax and take time out. Connecting people to each other – and to the land – is an immense social value that is part of what holds a healthy society together.

3.3.4 Including Children & Families in Nature

Research has shown that many children are experiencing “nature deficit disorder.”⁸ Regional parks and trails offer nature: they are

*ARBUTUS - East Sooke Regional Park,
Vancouver Island*

PHOTO BY: Rachel Grigg
FLICKR PROFILE: Ray L G

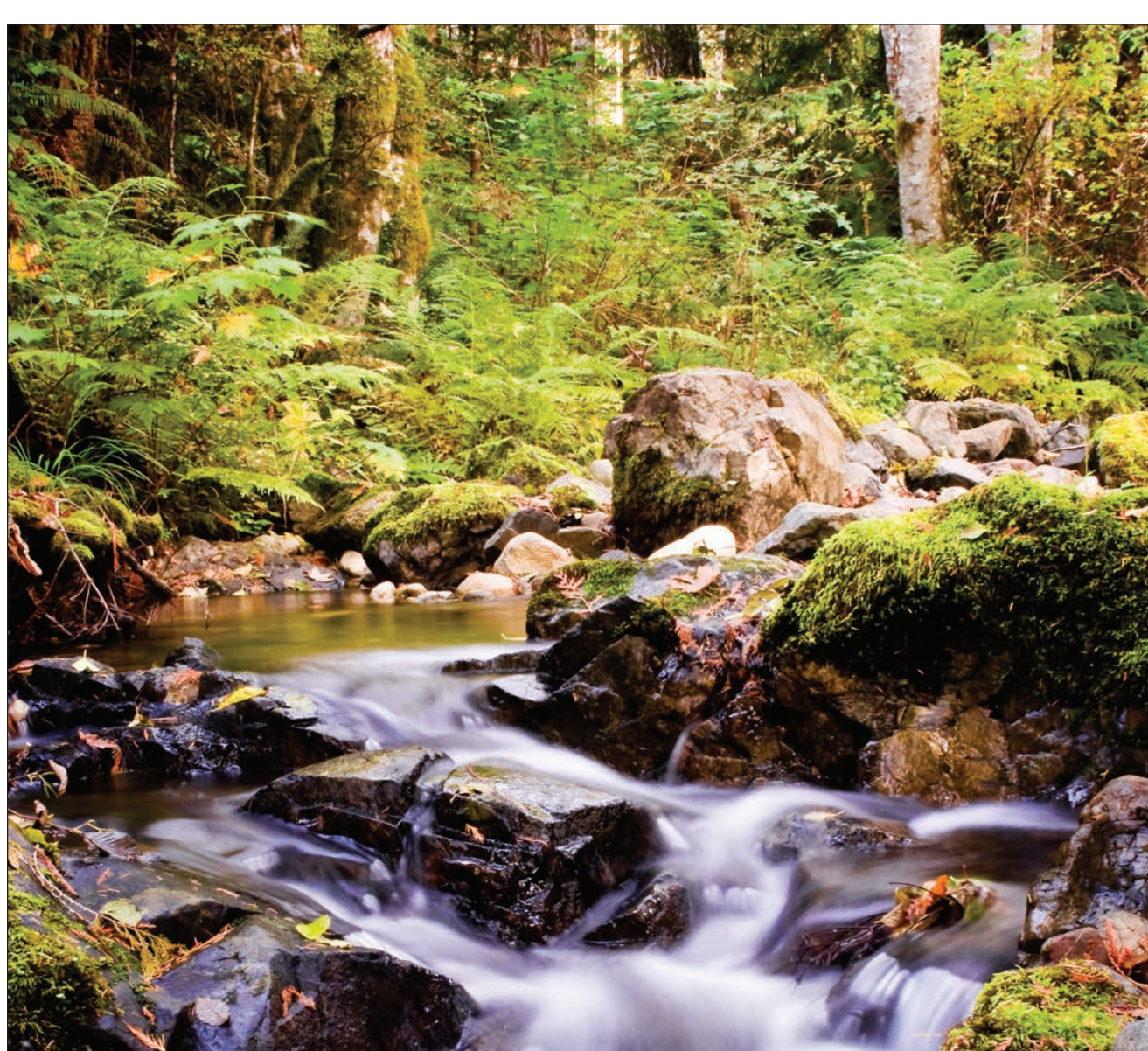


conveniently close to home, safe, affordable to use, and it doesn't take any special equipment or expertise for children (and adults) to be in and learn about nature.

3.3.5 Engaging the Community

Regional parks, trails and open spaces link residents to the land, which offers a rich source of personal discovery, joy, renewal and health. These often inspire a deep sense of belonging and stewardship. Residents are

engaged by volunteering in park planning and management, in helping remove invasive species, in disseminating information to park visitors, and in monitoring parks and trails. Groups such as the South Island Mountain Bike Society, Victoria Rowing Society and Elk/Beaver Lake Equestrian Society also play an active role in providing recreation opportunities.



SOOKE HILLS WILDERNESS REGIONAL PARK RESERVE -
*The largest park in the CRD, the Sooke Hills also provides
a buffer to the Greater Victoria Water Supply area.*

PHOTO BY: Terry Tuk
FLICKR PROFILE: TT_MAC

3.4 contributing to the regional economy

Research has shown that parks
and trails bring measurable direct
benefits to a city's economy.⁹

SATIN FLOWER - *Seymour Hill, Thetis Lake Regional Park, Vancouver Island.*

PHOTO BY: Phil Petersen
FLICKR PROFILE: Phil's Photos



3.4.1 Providing Natural Capital

The natural environment in regional parks provides an array of benefits. The ecosystems that provide these benefits are often referred to as “natural capital.” Natural capital refers to the earth’s land, water, atmosphere and resources. This capital is organized and bundled within the earth’s natural ecosystems, which provide resources and flows of services that enable all life to prosper on the earth. Natural capital is critical to the economic and social

wellbeing of the residents of the capital region: trees clean the air; carbon is drawn out of the atmosphere by trees, plants and soils; wetlands filter the water; and forests provide wildlife habitat and store flood waters. Research has shown that natural capital and the benefits it provides are extremely valuable in monetary terms. In reality, they are truly priceless.¹⁰ Rapid population growth and extensive development place unprecedented pressure on natural capital.

3.4.2 Contributing to the Tourism Industry

Regional parks and trails are important to tourism in the capital region. It is estimated that approximately 20 percent of the visitors to some regional parks and trails in the summer are tourists.¹¹ Tourists spend money on accommodation, food and guiding services, and outdoor recreation equipment.

SOUTHERN GULF ISLANDS - *Hikers can enjoy spectacular vistas of the Gulf Islands and the Lower Mainland.*

PHOTO BY: Evan Leeson
PHOTO SOURCED FROM CRD IMAGE LIBRARY

3.4.3 Supporting the Recreation Industry

For many people in the region, outdoor recreation is part of their lifestyle. This creates demand for retail services for everything from outdoor equipment and clothing to a refreshment and a meal at the end of a hike.



ROCHE COVE REGIONAL PARK - *At the 34 km marker on the Galloping Goose Trail.*

PHOTO BY: Bill Irvine
FLICKR PROFILE: wjis21



3.4.4 Enhancing Property Values

As research has shown, homes that are close to parks and trails and/or have a parkland view, have a higher value than those without that type of access.

3.4.5 Reducing Health Care Costs

Numerous studies have shown that physically inactive people are more of an economic burden to a society than are those who are

regularly physically active.¹² Lack of exercise is known to contribute to everything from childhood and adult obesity to a higher risk of some types of cancer, from diabetes and heart disease to high blood pressure, stroke, dementia and loss of balance in the elderly.

Parks, trails and open spaces are close by, easy to access and affordable, which encourages more people to use them more often. The more physically active residents are, the more overall physical and mental health improves. The direct result is less need for health care and lower health care costs.

AYUM CREEK REGIONAL PARK RESERVE - This small park reserve protects the stream-fed estuary of Ayum Creek, which empties into the Sooke Basin.

PHOTO BY: Rachel Grigg
FLICKR PROFILE: Ray L G



3.5 reflecting the local culture

“Places of cultural heritage enrich people’s lives, often providing a deep and inspirational sense of connection to community and landscape.”¹³

Regional Parks protect many sites and features of great social and cultural value. These sites are both a window into the past and part of lives today. They tell the story about the peoples of the region. For First Nations, the connection to some of these sites goes back thousands of years and has deep spiritual and cultural roots.

3.5.1 First Nations

The land and water in many regional parks is important to the First Nations in whose traditional territory these parks are located. The health of the landscapes, plants and animals is integral to the overall cultural wellbeing of First Nations. First Nations have a close connection to these natural areas, which have valued resources, both tangible and intangible, that help define and support First Nations culture. In regional parks, there is an opportunity to work with First Nations in a manner that supports maintenance and enhancement of their cultural

wellbeing and continued connection to places they have valued for thousands of years.

There is an opportunity for First Nations and Regional Parks to work together on planning and managing the regional parks and trails, and to integrate First Nations knowledge into planning and management policies and processes. Engaging First Nations in park management can also show visitors to regional parks some of the richness of First Nations histories and perspectives and the importance of their connection to the land.

LONE TREE HILL REGIONAL PARK - *Lone Tree, a “bonsai-like” Douglas fir, has greeted hikers at the summit of this hill for more than two centuries.*

PHOTO BY: Terry Tuk
FLICKR PROFILE: TT_MAC



3.5.2 Conserving Post-Contact Cultural History

The capital region has a rich history of post-contact settlement that has helped shape the region as it's known today. Many regional parks and trails contain features, buildings and sites that reflect this history. Protecting and interpreting these features and sites brings to life another important aspect of these parks and trails.



4 challenges facing regional parks & trails

ALLRIDGE POINT - *East Sooke Regional Park, Vancouver Island*

PHOTO BY: James R. Page

FLICKR PROFILE: wild prairie man

Regional Parks faces many challenges in achieving its vision and mission. In this section, eight of these are highlighted. The planned response to these challenges is described in Part Two.

4.1 managing for growth

Over the next three decades, the CRD's population is projected to increase from 364,000 (in 2008) to 475,000 (in 2038), an increase of 111,000 people. This growth will primarily be seen in the Western Communities and in the Core Area: Saanich, Oak Bay, Victoria and Esquimalt.¹⁴ It is anticipated that the population of the region will continue to increase well beyond 2038.

The region will also see changes to the structure of its population. While the number of people in most age groups will increase, the greatest absolute and relative growth will be among the older age groups.

Population growth and aging of the region's current population through the retirement stages of the lifecycle will have profound implications for regional parks, on everything from trail and facility development standards, to volunteer opportunities, to planned giving. The major implications are:

- Visits to regional parks and trails will increase. The biggest increase in use will most likely be seen in the regional parks and trails in the West Shore, Sooke and Juan de Fuca areas. This will place increased demands on facilities (e.g., space

for vehicle parking, washrooms, picnic sites, camping sites and trails) and services (e.g., bylaw enforcement, environmental education, environmental conservation, and volunteer management).

- Pressure for an increased variety of recreation activities, as well as simple crowding, will create a need for more and more varied places for residents and visitors to recreate. Increased use of swimming beach areas, such as Elk/Beaver, Thetis, Durrance and Matheson Lakes, will mostly likely result in overcrowding and the need

ISLAND VIEW BEACH REGIONAL PARK - *This long, sandy beach is perfect for bird watching, exploring, picnicking and swimming.*

PHOTO BY: Patrick Doheny
PHOTO SOURCED FROM CRD IMAGE LIBRARY



for an additional swimming beach area in the Western Communities. One such area that could be developed as a beach for swimming is at Humpback Reservoir in Sooke Hills Wilderness Regional Park. It was also heard from the public that there is a desire for more marine beach accesses.

- Pressure to use the existing land base for suburban development will result in the loss of natural areas, greenspace and biodiversity.
- Existing parks will become more valuable as places that conserve the natural

environment and offer residents a place to experience nature, participate in outdoor recreation and get away from urban and suburban development.

Regional Parks needs to plan now to identify natural areas and trail corridors that need to be added to the existing system to meet the short and long-term outdoor recreational needs of residents and to protect the 'green infrastructure' of the region, otherwise opportunities will be lost.

4.2 maintaining ecological integrity

Regional parks represent remnants of the region's original ecosystems. These parks connect to the region's watershed and are an important contributor to watershed health and protection of marine and fresh water receiving environments. It is important to ensure that these ecosystems continue to function, evolve and remain viable over the long-term. Ensuring ecological health is a significant challenge, since:

- most parks are fragments of altered landscapes and do not protect complete ecosystems;

- park boundaries have often been determined by administrative rather than ecological considerations;
- park environments are subject to impacts from urban, suburban and resource land uses on surrounding lands;
- park ecosystems have often been altered by past land uses;
- park ecosystems are subject to impacts from visitors and visitor facilities; and

- non-native species have invaded regional parks, altering their natural character and displacing native plant and animal species.

Regional Parks needs to meet these challenges in order to maintain the ecological integrity within regional parks over the long-term.

COBBLE BEACH AT PARRY BAY - *Devonian Regional Park, Vancouver Island.*

PHOTO BY: Terry Tuk
FLICKR PROFILE: TT_MAC



4.3 connecting with nature

Outdoor activities play an important role in the lives of residents of the capital region and connect people with nature. The most popular activities in regional parks are hiking, walking, horseback riding, cycling, camping, swimming, boating, beachcombing, fishing and nature study. Regional parks also provide opportunities for group activities such as picnics, festivals and competitive sporting events. These activities contribute to a healthy lifestyle and can be enjoyed year-round.

People are attracted to parks because of the natural environment, and increased use affects the very things those visitors come to enjoy. The challenge is to ensure that there is sustainable harmony between sound land stewardship and outdoor recreation activities. It needs to do so with careful planning, management, education and allocation of financial resources, working in partnership with park users.

Education plays a key role in addressing the protection of parks and connecting people with nature. With the outdoor experiences provided

through interpretation programs, visitors can learn about regional parklands and why they are protected and develop an interest in and connect with nature.

Although some recreational activities may represent a threat to parks, effective communication, through both personal and non-personal media, can foster support for initiatives and management decisions designed to protect parkland and trails. It can also contribute to an understanding of regional and global conservation issues thereby enabling citizens and communities to support

4.4 responding to increasing & changing use

best practices in a wide range of sustainability contexts. Education in parks has a unique role to play in connecting people's hearts and minds to nature for the greater good of the bioregion.

Regional parks and trails are easily accessible with an estimated five million people visiting them in 2009. That number will likely continue to increase, leading to crowding and conflicts among outdoor recreation user groups. While use of some regional parks and trails is not yet at the saturation point, Regional Parks needs to address the management of this expected increase, while protecting the natural environment and providing a quality outdoor experience for everyone.

The challenge is to place the right activity in the right area and within the context of the

vision and designated purpose of the regional park system and specific park or trail.

Regional Parks has also noted a change in use of regional trails over the past ten years. These trails are now being used more frequently as transportation routes for people commuting to and from work by bicycle. This is both a positive change and a challenge for the design and operation of the trails.

MATTHEWS POINT REGIONAL PARK RESERVE -
*This park reserve features steep bluffs with
spectacular views of Active Pass.*

PHOTO SOURCED FROM CRD IMAGE LIBRARY



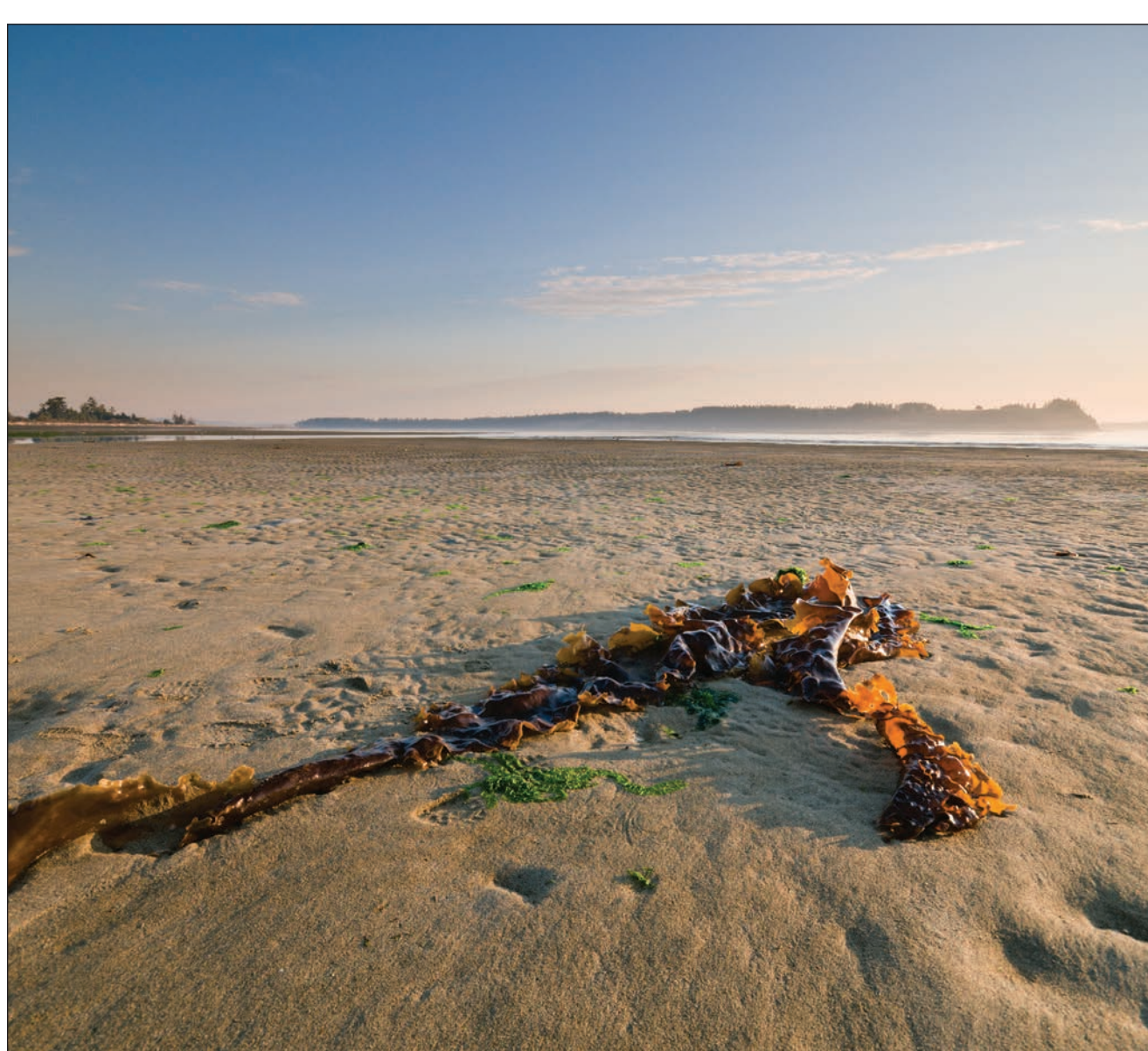
4.5 funding existing demand

The many services and facilities that Regional Parks provides are supported primarily through property taxes. The total 2010 operating expenditure budget for Regional Parks was \$9,180,100. Like other public sector park agencies, Regional Parks faces significant funding challenges. Over the past ten years, Regional Parks has acquired 4,480 hectares of land. Some of this land is held in park reserve status and requires services and facilities before it can be opened. There are also costs to manage the land held as park reserve. In existing regional parks and trails, some major infrastructure

needs to be upgraded. There is also increased financial restraint and competition for public money for other regional services, such as hospital facilities, water supply and wastewater treatment. And Regional Parks faces a financial challenge when acquiring land for regional parks because of high property values in the capital region.

Effective financial management of Regional Parks is essential to ensure the long-term sustainability of the system. It is important to examine the capacity of the organization to operate and manage the system in a fiscally

responsible manner, while both providing stewardship of natural and cultural resources and built infrastructure, and ensuring the delivery of excellent services to park visitors. On finalization of this Strategic Plan, a financial plan will be prepared that will comprehensively address all aspects of the funding necessary for Regional Parks to achieve its strategic vision.



ISLAND VIEW BEACH REGIONAL PARK - *The first rays of sunlight on the beach front RV and tent campground on the Saanich Peninsula.*

PHOTO BY: Bryn Tassell

FLICKR PROFILE: Brynn Tassell

4.6 acquiring new regional parkland

In 2000, the CRD Board established a ten-year Land Acquisition Fund at a rate of \$10 per average residential household. The fund generated approximately \$1.7 million per year to purchase land for regional parks and trails, as documented in the CRD Regional Parks Master Plan (2000). In 2010, the Board extended the Land Acquisition Fund for another ten years and increased the fund by \$2 per average residential household per year, to a maximum of \$20 in 2014 through to 2019. The Fund will generate approximately \$3.4 million per year at the \$20 rate.

4.7

establishing parks & trails in the capital region by other agencies

In 2010, the CRD made significant acquisitions of private land in the Sooke Hills and at Jordan River. The financial acquisition commitments for those purchases extend to 2015. As a result, Regional Parks will not have significant funds for further land acquisition until 2016.

Regional Parks has identified areas with regional park potential and will continue to work with partners and donors, through the Regional Parks Legacy Program, to add land to the regional parks and trails system.

All levels of government in the capital region acquire land for parks. Collaboration among agencies is essential, so that efforts are not duplicated and so that planning and management initiatives are integrated, wherever possible.

Under current management policy, Parks Canada and BC Parks do not have plans at the present time to establish new land-based parks in the region. Parks Canada is conducting a feasibility study to establish a National Marine Conservation Area in the southern

Strait of Georgia. Parks Canada and BC Parks could potentially add land to existing national and provincial parks. In the CRD's member municipalities and electoral areas, some new parks and trails could be established, but those areas would generally be small and designed to principally serve the local residents. On the Gulf Islands, the Islands Trust Fund has a conservation plan to protect native species and natural systems. This could result in additional land being protected for conservation purposes.



SOOKE POTHOLES REGIONAL PARK - *Picnic or swim at the river, explore the short forest trails or enjoy the stunning vistas from one of several viewpoints.*

PHOTO SOURCED FROM CRD IMAGE LIBRARY

4.8 integrating land use planning

For the CRD, this means that establishing significant new parks and trails to serve the needs of the people in the region and to protect the natural environment would rest primarily with Regional Parks. This is especially true for land west of the Sooke River.

Regional parks and trails help define the regional landscape, and it is important to manage them in the context of their relationship with the rest of that landscape. However, the regional parks and trails system is only one part of land use planning in the CRD. It is not part of the Regional Parks current mandate to specifically address the need in the region to protect open space, agricultural land and urban forest or to provide a buffer to suburban development.

Regional parks and trails will be affected by surrounding land use, and in turn, can influence what takes place on adjacent land. It is important to manage land use both inside and outside of regional parks and trails boundaries. This is another reason why it is so important for Regional Parks to collaborate with the federal and provincial governments, the region's municipalities, Islands Trust, First Nations, conservation groups, land trusts and others agencies and groups. This will be critical in establishing species corridors in support of biodiversity.

Planning initiatives in adjacent regional districts also have implications for CRD Regional Parks. In the Cowichan Valley Regional District, trail planning for the Trans Canada Trail connects directly with the regional trails network in the capital region. In Metro Vancouver, the regional trails system and Experience the Fraser program connect with the CRD's regional trails system through the ferry terminals at Tsawwassen and Swartz Bay.



WITTY'S LAGOON - *Forested trails, a species-rich lagoon and a long sandy beach make this park a frequent destination for locals and tourists to the capital region.*

PHOTO BY: Christina Greengrass
FLICKR PROFILE: Summer Diva



PART TWO

5 goals for regional parks & trails

MOUNT MACDONALD - *Sooke Hills Wilderness Regional Park Reserve, Vancouver Island.*

PHOTO BY: Robin Robinson
FLICKR PROFILE: [robinnestridge](#)

Regional Parks has two program areas: regional parks and regional trails. Presented in this section are the goals and a classification system for each; each program is based on the vision and mission that are presented at the front of the plan.

5.1 regional parks

5.1.1 Goals for Regional Parks

Regional parks are dedicated to:

- protecting the region's extraordinary biodiversity in perpetuity, and
- providing for the health, inspiration and education of residents and visitors through human-powered outdoor experiences and activities that foster enjoyment of, and appreciation and respect for the region's natural environments.

5.1.2 Discussion

The fundamental goals of regional parks have two complementary pillars:

- to protect the biodiversity of the region and the ecological integrity of the parkland, and
- to provide a range of opportunities for people to experience the land and water.

Both are reflected in the reasons for establishing a regional park and in the management of individual regional parks. Although the two parts of the purpose complement one other, they can – and often do – create management challenges.

5.1.3 Protecting the Natural World

The environmental value of regional parks is immense and increasingly significant in this progressively more urbanized and suburbanized region. Regional parks contribute to protection and conservation of unique ecosystems, plants, animals and landscapes. Protecting the natural environment is important because it fosters a healthy environment that attracts people to regional parks.



HARLEQUIN DUCK - *Sooke Potholes Regional Park, Vancouver Island*

PHOTO BY: James R. Page
FLICKR PROFILE: wild prairie man

Managing regional parks is really about people being in nature and having the smallest possible footprint on the land. When necessary, it is also about restricting people from certain areas so that ecosystems, species and processes can function unaltered without the impact of humans.

Residents of the region have said that while they want Regional Parks to emphasize both parts of the goal, protecting the natural environment remains their top priority. Therefore, the conservation of the natural environment needs to be incorporated into all planning,

management and operational decisions and actions across the organization.

Maintaining or restoring ecological integrity by protecting natural resources and processes, will therefore be Regional Parks' first priority when considering planning, management and operational actions.

5.1.4 Outdoor Recreation

Outdoor recreation and nature appreciation are a significant part of the lifestyle of CRD residents, so providing satisfying opportunities

for outdoor experiences and activities is also a major part of what Regional Parks does.

Regional Parks recognizes that not all types of outdoor activities can be accommodated in all, or perhaps in any, regional parks within the system due to incompatibility with the vision. One such activity is off-road vehicle use. These activities have high recreational and economic value in the region and need designated spaces for this activity to occur outside regional parks.

MATHESON LAKE OUTFLOW - *Matheson Lake
Regional Park, Vancouver Island*

PHOTO BY: James R. Page
FLICKR PROFILE: wild prairie man



This could be achieved through partnerships with public and private land managers in the region. The CRD could take a lead role to facilitate these potential partnerships.

5.1.5 Regional Parks Classification

A regional parks classification system is a method of distinguishing the different roles that individual parks play in achieving the overall purpose of regional parks – to provide a range of protected natural environments

and opportunities for outdoor experiences and activities.

A parks classification system is important, because the natural environment in each regional park is unique and has its own degree of sensitivity, and each regional park can only support a certain level of outdoor recreation activity and facilities. Classification helps determine the most appropriate activities for each park and guide park specific management planning.

A classification system also helps to identify gaps in the existing regional parks system, and

the types of parks, natural environments and recreational opportunities that could be added.

Regional parks are classified by their predominant characteristics and purpose. The classifications are supported by management planning documents. These provide strategies to protect the natural environment, and they define appropriate levels of activities.

A park's classification, for management focus, can only be changed by a resolution of the CRD Board.

GONZALES OBSERVATORY - *Gonzales Hill Regional Park features a weather station that is now a heritage building.*

PHOTO BY: Gordon Pritchard
FLICKR PROFILE: GordonPritchard



Regional parks are classified by management focus. The management focus underscores the different management emphasis for each regional park. These differences need to be acknowledged in the planning for and management of individual parks. The management of land and water within a regional park will be defined in the zoning scheme in the park management plan. Depending on its predominant characteristics and purpose, a regional park falls into one of four distinct management focus classifications:

- Wilderness Area
- Conservation Area
- Natural Area
- Recreation Area

Refer to Table 3 on the next page for full descriptions of these classifications.

table 3: regional park classifications description

WILDERNESS AREA	CONSERVATION AREA	NATURAL AREA	RECREATION AREA
<p>A Regional Wilderness Area is characterized by:</p> <ul style="list-style-type: none"> • a large land base, generally more than 1,000 hectares; • the conservation of ecosystems, with minimal human interference; • opportunities for visitors to experience, firsthand, the park’s ecosystems; • opportunities for backcountry recreation and camping; • the provision of few, if any, rudimentary services and facilities; and • the experience of remoteness, solitude and harmony with nature. <p>Maintaining wilderness areas in the region is an important part of the regional parks function. Wilderness is critical to sustain wildlife and plants that rely on sizable natural areas for their survival and to provide wilderness outdoor experiences and activities. They are places where residents can experience wilderness close to their home. East Sooke, Sea to Sea Green Blue Belt and Sooke Hills Wilderness regional parks are the sole examples of Regional Wilderness Areas in the capital region.</p>	<p>A Regional Conservation Area protects regionally significant natural environments that contain sensitive and threatened ecosystems (e.g., they will have significant Garry oak, old-growth forest, salt marsh, or estuary ecosystems). They contain rare or endangered plant and wildlife species and their supporting ecosystems. The size of a Regional Conservation Area should be sufficient to ensure that natural features can be protected and remain viable over the long-term.</p> <p>Outdoor activities will be permitted in a Regional Conservation Area, provided they have minimal impact on the natural environment. In most cases, the main activity will be hiking. These areas will generally have basic facilities, such as trails, parking areas, toilets and signage.</p> <p>Examples of a Regional Conservation Area are Witty’s Lagoon, Mill Hill, Francis/King, Matthews Point and Island View Beach regional parks.</p>	<p>A Regional Natural Area protects the natural environment and provides opportunities for a range of appropriate outdoor experiences and activities. These natural areas are not as ecologically sensitive or diverse as those found in a Regional Conservation Area, although they may contain some sensitive and threatened ecosystems. These ecosystems will be identified in the park management plan, and conservation will be the priority in those areas. Regional Natural Areas also protect key greenspaces that are important to the natural character of the region.</p> <p>These areas will try to accommodate a range of appropriate outdoor experiences and activities. The exact uses will be outlined in the park management plan. Examples of a Regional Natural Area are Mount Parke, Coles Bay and Horth Hill regional parks.</p>	<p>A Regional Recreation Area provides opportunities for many outdoor experiences, activities and events, and will be managed to accommodate a relatively high number of visitors. Facilities will be developed to support this level of use. The area must lend itself to development for a variety of uses that meet recreational needs, and it must be able to withstand intensive public use.</p> <p>This classification is distinct from other parks classifications in a number of ways:</p> <ul style="list-style-type: none"> • The emphasis is on outdoor experiences and activities, although protecting the natural environment will be addressed in all decision-making about visitor use and facilities. • The range of acceptable recreational activities in these areas will be the widest within the regional parks and trails system. • Recreation activities may include competitive sports. • Recreation facilities operated by non-profit groups may be permitted. • Opportunities and facilities may be provided for celebrations such as festivals, and group functions (e.g., picnics). <p>Elk/Beaver Lake is an example of a Regional Recreation Area. It is the only regional park in the capital region with this classification.</p>

table 4: classification of existing regional parks by management focus

MANAGEMENT FOCUS				
REGIONAL PARK	REGIONAL WILDERNESS AREA	REGIONAL CONSERVATION AREA	REGIONAL NATURAL AREA	REGIONAL RECREATION AREA
Albert Head Lagoon				
Ayum Creek Regional Park Reserve				
Bear Hill				
Brooks Point				
Coles Bay				
Devonian				
East Sooke				
Elk/Beaver Lake				
Francis/King				
Gonzales Hill				
Horth Hill				
Island View Beach				
Kapoor Regional Park Reserve				
Lone Tree Hill				
Matheson Lake				
Matthews Point Regional Park Reserve				
Mill Farm Regional Park Reserve				
Mill Hill				
Mount Parke				
Mount Wells				
Mount Work				
Roche Cove				
Sea to Sea Regional Park Reserve				
Sooke Hills Wilderness Regional Park Reserve				
Sooke Potholes				
Thetis Lake				
Witty's Lagoon				

THETIS LAKE REGIONAL PARK - *If you have a canoe, try an early morning paddle and you may even have the lake all to yourself.*

PHOTO BY: Bill Irvine
FLICKR PROFILE: wjis21



5.2 regional trails

5.2.1 Goals for Regional Trails

Regional trails are managed to provide:

- an arterial trails system that connects the municipalities and electoral areas of the entire region including individual Southern Gulf Islands and Salt Spring Island;
 - a non-motorized transportation and recreation cycling and pedestrian route on a designated corridor separated from roads, or on a bicycle lane within an existing road
- right-of-way, to connect the communities of the capital region, and the CRD to the Cowichan Valley Regional District and Metro Vancouver;
 - a hiking and walking trail that connects the communities of the capital region and the CRD to the Cowichan Valley Regional District and Metro Vancouver;
 - trails for long-distance horseback riding; and
 - greenways that offer habitat for animals and plants.

5.2.2 Regional Trails Classification

Regional trails are classified in three categories:

- bike and pedestrian trails
- multiple-use trails
- hiking and walking pathways

This classification system corresponds to the Regional Pedestrian and Cycling Master Plan.

Bike and Pedestrian Trails

These regional trails are designated primarily



WITTY'S LAGOON TRAIL - Witty's Lagoon Regional Park features More than 5 km of trails through woodland, past lagoon and marsh.

PHOTO BY: Christina Greengrass
FLICKR PROFILE: Summer Diva

to accommodate a high volume of users for recreational and commuting cycling, and for walking and running. Non-motorized vehicle transportation corridors for commuters, they are the arterial cycling trails in the region. These trails have major infrastructure and a paved surface.

There are currently three bike and pedestrian regional trails in the CRD:

- The Galloping Goose Regional Trail that runs from Luxton (in the City of Langford) to Victoria.
- The Lochside Regional Trail - 27 km in length, this trail is collaboratively managed

by Regional Parks, the municipalities of Saanich (10 km), Central Saanich (7 km), North Saanich (6 km, 3.25 km of which are managed by the BC Ministry of Transportation and Infrastructure, Highways), and the Town of Sidney (4 km). Some sections of this trail are not developed.

- E&N Rail Trail is a multi-use path that will be built within the E&N rail corridor from the Johnson Street Bridge in the City of Victoria to Humpback Road in the City of Langford. The trail will eventually join the future Trans Canada Trail near Humpback Road in Langford.

Multiple-Use Trails

These regional trails are designed for biking, hiking and horseback riding. The surface of these trails will be improved with gravel and designed to prevent degradation of the natural surface area through erosion and runoff.

There is one existing and two proposed multiple-use regional trails:

- The Galloping Goose Regional Trail from Luxton to Leechtown (existing).
- The Trans Canada Trail section in Sooke Hills

Wilderness Regional Park. This trail will connect with the Cowichan Valley Regional District's regional trails network. The section is 13 km (proposed).

- The multiple-use trail identified in the Sea to Sea Regional Park Management Plan that extends from Harbourview Road, to Empress Mountain and then following Todd Creek to the Galloping Goose Regional Trail and Sooke Potholes Regional Park (proposed).

Hiking & Walking Pathways

Regional hiking and walking pathways are regional trails that link regional and other parks into one continuous pathway system in the capital region. They are corridors used for walking, running, hiking and, where possible, horseback riding. These regional pathways are modelled on the pathway system found in Great Britain.

Pathways provide natural greenway connections between parks through suburban land and other landscapes, such as farms

and resource lands. Regional pathways, as a general rule, will be a single-track trail that may, at times, be embedded in and parallel to a regional trail. They could also exist on streets.

Currently, there are four major pathways in the capital region:

- Approximately 10 km of the West Coast Trail lie within the capital region. The trail is managed by Parks Canada.
- The Juan de Fuca Marine Trail is 47 km long. It is managed by BC Parks.

- The Kludahk Trail is approximately 50 km long. It is managed by the Kludahk Outdoor Club through the Recreation Sites and Trails BC and in cooperation with the forest industry.
- Colquitz Creek Trail is 9.5 km long, of which 5.5 km are maintained. It is managed by the District of Saanich.

Parts of the proposed regional pathway system also lie within existing regional parks (e.g., Elk/Beaver Lake, Mount Work and Thetis Lake regional parks).

Other Trail Designations in the Capital Region

TRANS CANADA TRAIL

It is proposed that the section of the Trans Canada Trail that lies within the CRD will extend from Beacon Hill Park, through streets in the City of Victoria to the Galloping Goose Regional Trail, and then through Sooke Hills Wilderness Regional Park. This trail will then connect with the Cowichan Valley Regional District's regional trail network near Shawnigan Lake.

PROVINCIAL MARINE TRAIL

The vision for the Provincial Marine Trail

Network is to establish a primarily human-powered water trail system along the coast of BC that will become the most extensive water trail network in the world. The primary goal is to provide public access to a series of beaches and upland campgrounds so that self-propelled boaters (e.g., kayakers and canoeists) or users of small beachable water craft have the opportunity to safely explore and experience BC's west coast. Potential sites will include currently undeveloped recreation sites, developed recreation sites, national, provincial, regional and municipal parks

HELVELLA LACUNOSA - *Mount Wells Regional Park,
Vancouver Island.*

PHOTO BY: Robin Robinson
FLICKR PROFILE: robinnestridge



(including the capital region), private marinas/resorts, commercial operators, and First Nations. Recreation Sites and Trails BC (RSTBC) is partnering with the BC Marine Trail Network Association (BCMTNA) on the project. The BCMTNA will play the lead role in identifying and inventorying sites. RSTBC will provide support and technical advice, and assist with lands status checks, First Nations consultations, stakeholder referrals and establishing legal tenure on Crown land. Two pilot projects to test the process are currently underway: 1) Gulf Islands and East Vancouver Island (Victoria to

Nanaimo) and, 2) North and West Vancouver Island (Port Hardy to Tofino). The Gulf Islands Section was opened in May 2011.

VANCOUVER ISLAND “SPINE” TRAIL

The Vancouver Island “Spine” Trail is a proposed trail from Victoria to Cape Scott at the northern tip of Vancouver Island. This is an inland route that would pass near many communities yet retain its wilderness character, following historic routes and completed trails where they exist. Approximately 700 km long, the trail will provide a recreational adventure route for residents and visitors through the beautiful

back country of Vancouver Island. Primarily a hiking trail, but allowing non-motorized multiple-use, where appropriate, the route will trace mountain ridges, and run through forests and past lakes. This proposed trail is similar to many successful long-distance routes across the world.

The part of the trail that would lie within the capital region would follow the regional trail through Sooke Hills Wilderness Regional Park and the Galloping Goose Regional Trail, through the City of Victoria along streets to Beacon Hill Park.



6 the proposed regional parks & trails system

VIEW FROM MOUNT WELLS REGIONAL PARK - *Mount Wells is a 123 hectare conservation park.*

PHOTO BY: Robin Robinson
FLICKR PROFILE: robinnestrIDGE

This section of the Strategic Plan describes the proposed regional parks and trails system for the next ten years and balance of this century.

Identifying the proposed system:

- helps Regional Parks formulate a land acquisition strategy and financial plan,
- assists in the preparation of park management plans,

- describes to private landowners, First Nations, the governments of Canada, British Columbia and the municipalities of the region, the long-term view of what areas are of interest to Regional Parks and to the region as a whole; and
- links with actions that will be identified in the Regional Sustainability Strategy.

6.1 proposed regional parks & trails system

The proposed regional parks and trails system is shown on Map 4 (page 81). This map is a graphic long-term vision of a regional system that recognizes the existing broad system of interrelated park areas, many of which are under the management of other levels of government.

Based on current information, the federal and provincial governments do not have plans to establish new parks within the capital region. Therefore, establishing new parks and trails will rest on leadership from the CRD and Regional Parks.

Realizing this proposed regional parks and trails system will take time. And as new opportunities, information and challenges appear, the shape of the proposed system could change. The process will require innovation, partnerships and collaboration. It will also require financial resources, direction from the CRD Board, opportunities to purchase land, public input, collaboration with federal, provincial, regional and municipal land-use and park-planning initiatives and the resolution of First Nations treaty negotiations.

Capital Regional District
Map 4
Regional Parks Strategic Plan
Proposed Regional Parks and Trails System



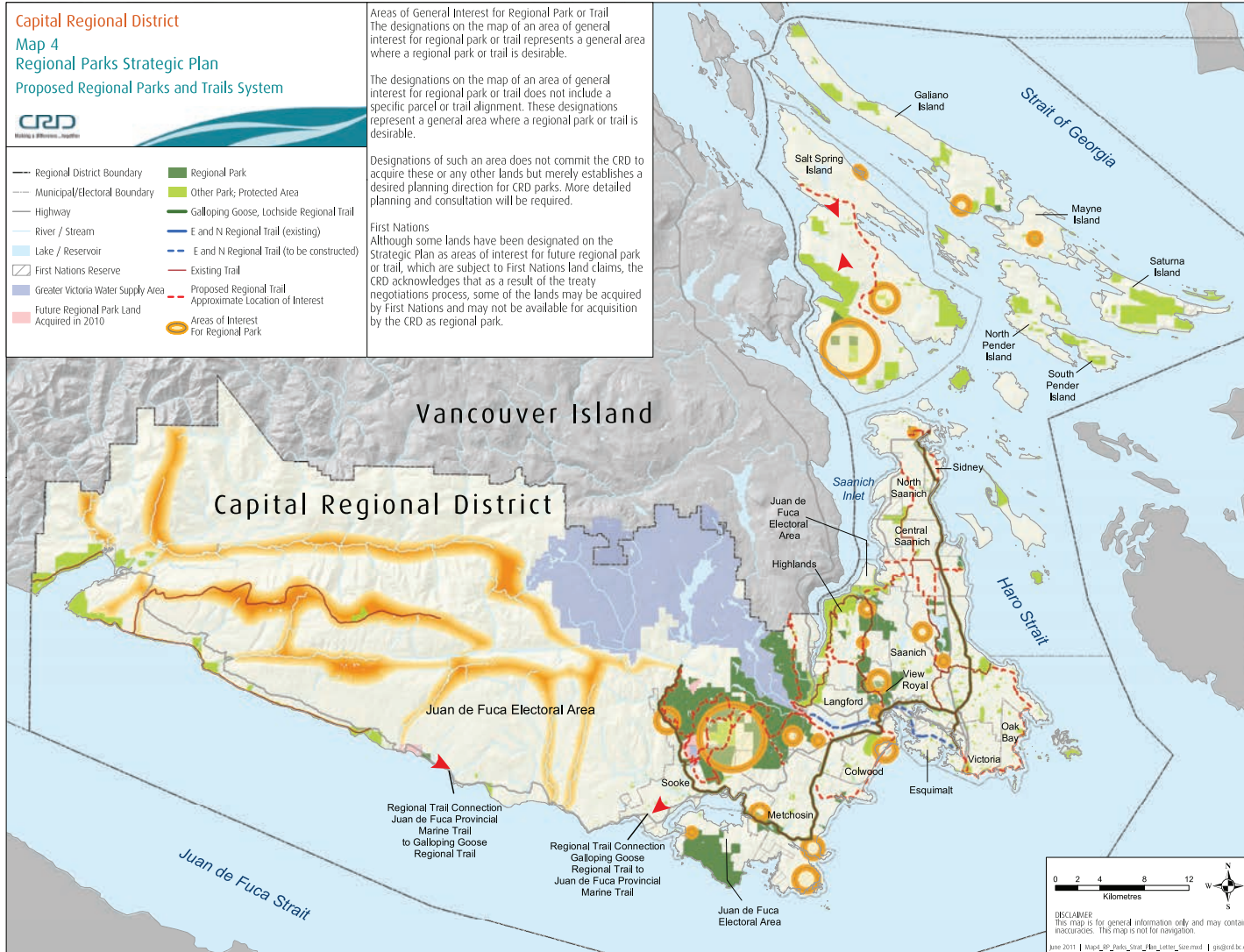
- Regional District Boundary
- Municipal/Electoral Boundary
- Highway
- River / Stream
- Lake / Reservoir
- First Nations Reserve
- Greater Victoria Water Supply Area
- Future Regional Park Land Acquired in 2010
- Regional Park
- Other Park, Protected Area
- Galloping Goose, Lochside Regional Trail
- E and N Regional Trail (existing)
- E and N Regional Trail (to be constructed)
- Existing Trail
- Proposed Regional Trail
- - - Approximate Location of Interest
- Areas of Interest For Regional Park

Areas of General Interest for Regional Park or Trail
 The designations on the map of an area of general interest for regional park or trail represents a general area where a regional park or trail is desirable.

The designations on the map of an area of general interest for regional park or trail does not include a specific parcel or trail alignment. These designations represent a general area where a regional park or trail is desirable.

Designations of such an area does not commit the CRD to acquire these or any other lands but merely establishes a desired planning direction for CRD parks. More detailed planning and consultation will be required.

First Nations
 Although some lands have been designated on the Strategic Plan as areas of interest for future regional park or trail, which are subject to First Nations land claims, the CRD acknowledges that as a result of the treaty negotiations process, some of the lands may be acquired by First Nations and may not be available for acquisition by the CRD as regional park.



map 4

The concept shown in Map 4 identifies areas of general interest for regional parks and approximate location for regional trails; it is not intended to indicate specific parcels or regional trail alignments. The notations on Map 4 represent a general area where a regional park or trail is desirable. Designation of such areas does not ensure acquisition; rather, it illustrates Regional Parks' desired direction.

Where trails follow on street routes, the Regional Pedestrian and Cycling Master Plan has identified the need for more detailed design. Some areas of general interest for future regional parks are San Juan Ridge, Jordan Ridge, Ford Lake-Cushen Lake-Fulford Creek on Salt Spring Island, and completing boundaries of existing regional parks.

SEA BLUSH - *Sooke Potholes Regional Park,
Vancouver Island.*

PHOTO BY: James R. Page
FLICKR PROFILE: wild prairie man

6.1.1 Why this System is Being Proposed

The purpose of the proposed system is to meet the needs and values of the region's residents, respond to expected population growth and changing demographics, protect the region's significant natural areas and provide areas for outdoor experience and activities.

The system of regional parks and trails proposed in this plan is guided by the following ideas:

- The vision for this century sets out what the regional parks and trails system could be in 2100.
- Opportunities to acquire natural areas in the region will diminish or be lost entirely as population grows, and as demand grows along with it to change the land use of existing unprotected natural areas.





NORTHWESTERN SALAMANDER EGGS -
*Sandcut Beach, Jordan River Regional Park
Reserve, Vancouver Island.*

PHOTO BY: Bryn Tassell
FLICKR PROFILE: Bryn Tassell

6.2 regional parks system objectives

- The population of the region could grow substantially this century. This will have serious implications for sustaining both the ecological health of the region and the health of its residents. This creates urgency to move forward now, to achieve the vision.
- Decisions made now about land use will affect the future of the proposed regional parks and trails system, so the interests of Regional Parks need to be considered in land-use planning and decision making.

The proposed regional parks and trails system shown in Map 4 is based on the following key objectives:

Establishing the Entire Regional Parks System

1. Present a very long-term vision for the regional parks system.
2. Assemble a regional parks system that recognizes and builds on the existing system of national, provincial, regional and municipal parks and other types of protected areas in the capital region.
3. Meet the evolving recreation and conservation needs of residents in the region and the anticipated needs of future generations.
4. Establish regional parks throughout the capital region which are accessible to all residents.
5. Respond to expected population growth in the capital region.
6. Increase the regional parkland west of the Sooke River.
7. Integrate the regional parks system into sustainability plans for the region.

8. Make substantial progress over the next 25 years to achieve the regional park trail system identified on Map 4. Adjust as needed to respond to changing conditions such as new scientific evidence or pressing regional needs. A concerted effort to make substantial progress will also significantly advance the vision of at least half the region's land and water base being managed for conservation.

9. Acquisition of land for the regional parks system is part of the long-term vision for the system and will be considered a priority. Opening new parks or trails for public use will be considered as resources permit.

Protecting the Natural Environment

1. Conserve the biodiversity of the region.
2. Protect areas that contain rare and critically endangered viable ecosystems.
3. Protect natural environments, both general and specific, that are under represented in regional parks and protected areas in the CRD.

4. Connect existing regional parks and protected areas by natural area corridors.
5. Create corridors designed to protect species and their movements.

Protecting Cultural Heritage

1. Conserve cultural features and explore partnerships with other levels of government, First Nations and non-profit groups.



LADY SLIPPER ORCHID - *Mount Wells Regional Park, Vancouver Island.*

PHOTO BY: Robin Robinson
FLICKR PROFILE: robinnestridge

Providing Opportunities for Outdoor Experiences & Activities

1. Assemble a regional parks system that will provide a range of opportunities for outdoor experiences and activities.
2. Establish new regional parks that provide opportunities for long distance hiking, camping, cycling, beach walking and swimming.
3. Respond to the changing demographics in the region and provide for the outdoor recreation needs of people of all ages and abilities, cultural groups and families.

Adding to the Boundaries of Existing Regional Parks

1. Protect and maintain the natural environments in existing regional parks.
2. Define park boundaries to reflect ecological or watershed units.
3. Provide adequate buffers from activities on adjacent lands.
4. Protect natural environments adjacent to regional parks, to consolidate ecosystems bisected by park boundaries.
5. Expand appropriate outdoor recreation opportunities and trail connectivity.

6.2.1 Gaps in the Existing Regional Parks System

An important part of the Strategic Plan is to identify areas of interest for Regional Parks. To enumerate these areas, it is important to look at the gaps in the current regional parks system in light of three different priorities:

- the management focus
- the natural environment focus
- outdoor recreation activities provided

WITTY'S LAGOON REGIONAL PARK - *Learn about this sensitive marine environment on Marine Day*

PHOTO SOURCED FROM CRD IMAGE LIBRARY



Regional parks and trails do not exist in isolation. Other levels of government also protect the region's natural environment and provide areas for outdoor recreation. Because of that, it is important to examine gaps in relation to other parks in the region, and in relation to the region's security objectives for biodiversity and ecosystem services.

6.2.2 Gaps by Management Focus

As shown in detail in Table 4, the significant gaps by management focus include:

- Areas such as Elk/Beaver Lake Regional Park that focus on providing multiple-use outdoor recreation opportunities. These opportunities include freshwater swimming, lake boating, rowing, group picnics, and community events. Opportunities to provide this type of regional park are limited in the capital region, but as the population grows, so does the demand for more and different types of outdoor recreation, such as rock climbing, mountain biking, horseback riding and camping (both front country and backcountry).
- Long-distance hiking trails that link the region's communities and major parks. This would include the trail development in the Sea to Sea Green Blue Belt and Sooke Hills Wilderness regional parks.

6.2.3 Gaps by Natural Environment Focus

General Natural Environments

Ocean coastlines and the land within the Coastal Western Hemlock and Mountain Hemlock biogeoclimatic zone are underrepresented in the region. Overall, the land west of the Sooke River



SITTING LADY FALLS - *Witty's Lagoon Regional Park, Vancouver Island.*

PHOTO BY: James R. Page

FLICKR PROFILE: wild prairie man

is not well represented in the regional parks and trails system.

Specific Ecosystems

The following specific ecosystems are under represented in regional parks: bogs, subalpine, Garry oak woodlands, coastal bluffs, wetlands, cliffs, dunes and spits. Old-growth forest on lands in the Coastal Douglas-fir, Coastal Western Hemlock and Mountain Hemlock biogeoclimatic zones, should also be considered a priority for acquisition.

6.2.4 Gaps by Outdoor Recreation Experiences & Activities

The gaps in the regional park system by outdoor recreation experiences and activities are:

- swimming beaches
- mountain biking trails
- access to the ocean coastline
- long-distance hiking trails

- camping; and
- winter snow-based activities such as cross country skiing, tobogganing, snowshoeing

THETIS LAKE REGIONAL PARK - *This regional conservation area was established as Canada's first nature sanctuary in 1958.*

PHOTO BY: James R. Page
FLICKR PROFILE: wild prairie man



6.3 regional trails system objectives

The Strategic Plan proposes a regional trails system, as shown on Map 4, based on the following objectives:

1. Connect regional parks to other national, provincial and major municipal parks and trails, key points of interest, major community facilities, transportation facilities and commercial centres.
2. Link with regional trails plans in Metro Vancouver and the Cowichan Valley Regional District.
3. Encourage alternative modes of non-motorized transportation, thereby helping to reduce pollution and greenhouse gas emissions.
4. Connect the urban, suburban and rural parts of the region with strategic consideration given to locating trails as connecting links between communities to enable their use as a viable transportation route for personal and work related trips.
5. Manage the regional trails routes wherever possible as greenways.
6. Connect the regional trails system with the regional cycle and pedestrian network.
7. Encourage green tourism related to economic development.
8. Promote the health benefits of regional trails and value as alternative transportation routes.

The regional trails and pathways system, as proposed, is a comprehensive one. Because it extends through existing parks and connects them with other trails systems and the local communities, realizing this system will require partnerships with the public, landowners,

EAST SOOKE REGIONAL PARK - *This West Coast wilderness park awaits adventurers to hike along the windswept rocky coast, over dry hilltops, through dark rainforest to sheltered coves.*

PHOTO BY: Phil Petersen
FLICKR PROFILE: Phil's Photos



interest groups, other levels of government, First Nations and business. The network will include trails that are owned, managed and operated by parties other than the CRD, as well as some that are jointly managed.

Part of the proposed regional trails system is included in the Trans Canada Trail and the Vancouver Island Spine Trail. This is the section from Mile Zero in Beacon Hill Park in Victoria, connecting to the Galloping Goose Regional Trail and extending through Sooke Hills Wilderness Regional Park to the Cowichan Valley Regional District.

The actual trails alignment and type of non-motorized use will be determined through detailed planning. The system will use road rights-of-way, easements, abandoned railway rights-of-way and utility corridors. Regional Parks will have a number of roles in bringing the proposed trails and pathways system, including the regional trail route on Salt Spring Island and the Southern Gulf Islands into being:

1. It will advocate that the system be established.
2. It will coordinate planning and the establishment of the system.

3. It will seek cooperative agreements or other partnership arrangements with public agencies, municipalities or private organizations for planning, funding and operating the system.

This will include the major regional trail route on Salt Spring Island and Southern Gulf Islands.

6.3.1 Proposed Regional Trails System Plan

The proposed regional trails system plan is shown on Map 4. These trails provide the



DOUBLE-CRESTED CORMORANT - *East Sooke Regional Park, Vancouver Island.*

PHOTO BY: James R. Page

FLICKR PROFILE: wild man prairie

major links in the proposed regional trails system that extends from Salt Spring Island and the Southern Gulf Islands to Swartz Bay to Port Renfrew and connects to other parts of Vancouver Island, and to Metro Vancouver. Other sections of the proposed regional trails and pathways system extend through Goldstream, Gowlland/Tod and John Dean provincial parks, Mount Douglas Park (District of Saanich), Horth Hill, Elk/Beaver Lake, Francis/King, Thetis Lake, Mount Work, Sooke Hills Wilderness and Mill Hill regional parks.

The key missing links that require attention are:

- routes on Salt Spring, and Southern Gulf Islands
- a connection to the Cowichan Valley through Sooke Hills Wilderness Regional Park,
- the connection of the Galloping Goose Regional Trail to Beacon Hill Park, a link to Uplands Park and Mount Douglas, and then to the Lochside Regional Trail,
- the connection from Thetis Lake Regional Park to Gowlland Tod Provincial Park via Mary Lake,
- the proposed regional trail from Swartz Bay to Gowlland/Tod Provincial Park and Mount Work Regional Park via Horth Hill Regional Park, Victoria International Airport, John Dean Provincial Park, and Centennial and Gore parks in Central Saanich, with a link to the Brentwood Bay ferry terminal,
- the trails system through Sooke Hills Wilderness Regional Park and the Sea to Sea Regional Park and beyond to the Kludahk Trail (San Juan Ridge), and
- the regional trail from the Galloping Goose Regional Trail to the Juan de Fuca Marine Trail.



MOUNT WORK REGIONAL PARK - *Mount Work is one of the largest regional parks, and is the dominant hill on the horizon from many vantage points in Saanich, Victoria and the Saanich Peninsula.*

PHOTO SOURCED FROM CRD IMAGE LIBRARY

This section details how the CRD will manage regional parks and trails under the Strategic Plan.

Goals are identified for each subject area in this section. These goals are important because they will assist in daily decision-making and provide a direction for the future of regional parks and trails. They also create a framework for developing detailed operational policies.

7 management goals

7.1

protecting the natural environment

Goals

1. To establish and manage a system of regional parks that protects the diverse range of ecosystems and species of the capital region, including ecosystems and species identified as most at risk of disappearing.
2. To establish, where possible, regional parks boundaries that follow ecological or watershed borders, with adequate buffers from uses and activities on adjacent lands, and to link regional parks to other parks areas by natural area corridors.
3. To protect and conserve biological diversity and give rare, threatened or endangered species special management attention.
4. To recognize fundamental processes of change in natural ecosystems, allowing them to evolve over time, and permitting natural processes to dominate whenever possible.
5. To maintain and restore healthy, viable ecosystems in regional parks and on regional trails.
6. To minimize the negative effects of human activities on the natural environments of regional parks and trails.
7. To remove non-native invasive plants and animals.
8. To undertake research and management activities that improve the understanding of parks ecosystems and the ability to sustain them.
9. To encourage environmental learning and sharing of knowledge among Regional Parks staff, other CRD departments, other park agencies, the public and research institutions.

MILL HILL REGIONAL PARK - *Garry Oak ecosystem restoration project volunteers (2010).*

PHOTO SOURCED FROM CRD IMAGE LIBRARY



10. To provide parks visitors with stimulating educational experiences that offer them a greater appreciation of the region's natural ecosystems and cultural resources, and that motivate them to conserve and protect those ecosystems and resources for future generations.
11. To provide current, accurate and comprehensive environmental information to visitors to help them understand and enjoy regional parks and trails.

12. To employ best management and sustainability practices as part of Regional Parks' environmental ethic in all aspects of managing and operating regional parks and trails.
13. To employ best land-management practices that conserve natural resources, promote biodiversity and contribute to reducing greenhouse gases.
14. To respond, adapt and prepare for climate change impacts.

To meet these goals, Regional Parks will incorporate environmental conservation, stewardship,

partnership and education into all aspects of parks and trails management and operation.

Environmental management of regional parks and trails is based on two cornerstone concepts: conservation and stewardship. Conservation is the careful protection, use and planned management of living organisms and their vital processes to prevent their depletion, exploitation, destruction or waste, and to promote their connectivity. Stewardship means caring, thoughtful and cautious management of the land and associated natural and cultural values, and passing on healthy ecosystems to future generations.

figure 4: environmental management framework



figure 5: adaptive management model to achieve the environmental management framework



Sound environmental management of regional parks and trails also includes conducting research (e.g., biological inventories) and environmental impact assessments, and providing environmental education and public information. The environmental management framework is shown in Figure 4. and the adaptive management model to implement this framework is shown in Figure 5.

SUNRISE - *Albert Head Lagoon Regional Park,
Vancouver Island.*

PHOTO BY: Paul Rioux
FLICKR PROFILE: Paul Rioux



7.2 cultural features

Goal

To protect cultural resources within regional parks and on regional trails.

7.3 visitor use activities

Goals

1. To provide, for regional residents and visitors of all ages and abilities, opportunities for a range of experiences and activities that foster enjoyment and appreciation, have a minimal impact on the natural environment and are appropriate to the purpose of each park or trail.
2. To provide opportunities for camping in some regional parks.

Compatible Outdoor Activity

Regional parks and trails have a special role

to play in providing opportunities for outdoor activities.

They have a long history of use by individuals, families and organized groups, but not all activities are appropriate, nor can they be accommodated in all regional parks. An compatible outdoor activity:

- depends on a natural environment;
- has a minimal impact on the natural environment;

- encourages an appreciation for and understanding and enjoyment of the natural environment; and
- is compatible with other park or trail uses.

Non Compatible Outdoor Recreational Activity

A non-compatible outdoor activity:

- has a significant impact on the natural environment and environmental integrity;
- significantly interferes with the enjoyment or activities of other visitors;

- causes excessive noise;
- involves the use of motorized vehicles or equipment;
- involves commercial services (unless they are program-oriented, personal services); and/or
- is prohibited by law, bylaw or regulation.

7.4 facilities

Goals

1. Design parks and trails facilities following best management practices to avoid or minimize impacts on the natural environment and historic/cultural features.
2. Include accessibility and universal design as primary considerations in any new facility development or upgrading project.
3. Prohibit permanent private sector commercial facilities in regional parks.
4. To demonstrate leadership in efficiency and green building practices.



ROCHE COVE - *Roche Cove Regional Park, Vancouver Island.*

PHOTO BY: Rachel Grigg
FLICKR PROFILE: Ray L G

8 implementing the strategic plan

This section describes how the Strategic Plan is proposed to be implemented, and what the most important strategic priorities will be over the next five years to move Regional Parks forward to achieve the vision and mission.

8.1 the significance of the strategic plan priorities

8.2 the pace and scope of implementation

The Strategic Plan defines priorities and actions to achieve these priorities. They provide clear statements about what Regional Parks' focus will be. Completing the actions will be a measure of how Regional Parks is progressing toward achieving the vision and mission. The strategic priorities and actions inform the financial plan, annual business and budget planning and provide concrete direction for annual work plans. The priority statements will be reviewed each year and adjusted as necessary.

The pace and scope of implementation will be influenced by numerous factors, some that can be controlled, and some that are beyond the control of Regional Parks. The implementation will be affected by changing circumstances, economic conditions, political direction, other CRD initiatives, and emerging opportunities. Therefore, the proposed strategic priorities and actions focus on the near horizon of the next five years. Regional Parks will monitor the implementation of the actions annually and reset the strategic directions in 2015 within the context of this ten-year Strategic Plan for the last five years of the plan (2016—2021).

It is also essential for Regional Parks to work realistically within the CRD's financial and human resource capacity. A financial plan for Regional Parks will be prepared as a supplementary document to the Strategic Plan.

Approval of the Strategic Plan does not constitute approval of funding for the implementation of the plan priorities.

VIETCH CREEK TRESTLE, GALLOPING GOOSE TRAIL -
*The Galloping Goose Trail connects Victoria BC to
Sooke (55 km) and is part of the larger Trans
Canada Trail that runs from coast to coast.*

PHOTO BY: Terry Tuk
FLICKR PROFILE: TT_MAC



FRANCIS KING REGIONAL PARK - *Walk under towering trees on one of the several trails in this park.*

PHOTO SOURCED FROM CRD IMAGE LIBRARY



8.3

how the strategic priorities were set

Setting the strategic priorities for the next five years is affected by both internal and external circumstances.

1. Over the last ten years, Regional Parks has added approximately 4,500 hectares to the regional parks and trails system and established five new regional parks and one new regional trail. Some of this land is held in regional park reserve (e.g., land banked) where no facilities or services are provided. Some of these areas need to be opened as a result of public use and demand.
2. Significant new parklands in the Sooke Hills and at Jordan River.
3. Current land acquisition financial commitments extend to 2015, so the CRD will not have significant funds to purchase land until 2016.
4. In 2008, Regional Parks started the development of the E&N Rail Trail. Additional financial resources are required to complete building and to operate the trail over the next five years.
5. Regional Parks is facing opportunities and challenges to manage existing parks and trails (e.g., increased use, demand to accommodate different uses, demand for new facilities, the need to complete park and trail management plans).
6. Several significant infrastructure projects in the region such as wastewater treatment and hospital expansion will impact the overall CRD budget and in turn could impact the Regional Parks budget.

8.4

strategic priorities from 2012 to 2016

7. The CRD will update its Strategic Plan in 2012 and complete the Regional Sustainability Strategy. The outcome of these two initiatives could affect future strategic priorities for Regional Parks.
8. Major residential development in Langford and Sooke will increase pressure to open parks adjacent to these areas.
9. There is a need to focus on maintaining, repairing or replacing existing major infrastructure such as toilet buildings and bridges.

Over the period 2012 to 2016, Regional Parks will focus on six strategic priorities:

1. Strengthen the management of existing parks and trails.
2. Strategically plan for and open existing land-banked parks and trails as resources are approved.
3. Strengthen community involvement and partnership.
4. Prepare for future land acquisitions.
5. Promote the health benefits of regional parks and trails.
6. Engage in planning for regional sustainability.

Strategic Priority 1: Strengthen the Management of Existing Parks & Trails

STRATEGIC ACTIONS

- Upgrade, maintain, repair or replace major facilities.
- Cultivate partnerships, explore new approaches and adopt best practices and technologies.
- Explore opportunities for generating non-tax revenue.
- Complete or update park and trail management plans for priority parks and trails.



GALLOPING GOOSE REGIONAL TRAIL - *Sightseers enjoy carriage rides during the summer.*

PHOTO BY: Bill Irvine
FLICKR PROFILE: wjis21

- Complete ecological inventories and conservation plans for priority parks and address priority conservation issues.
- Collaborate on the development of a regional natural area connectivity plan.
- Complete asset, maintenance and operation plans.
- Develop an environmental education plan, and provide leadership in a review of interpretive facilities in the region.
- Develop an outdoor recreation strategy.

Strategic Priority 2: Strategically plan for and Open Existing Land-Banked Regional Parks & Trails As Resources Are Approved.

STRATEGIC ACTIONS

- Develop a park and trail opening strategy.
- Continue construction of the E&N Rail Trail.
- In partnership with other public agencies, local government and private landowners, initiate planning for the regional trails system on Salt Spring Island and Southern Gulf Islands.

Strategic Priority 3: Strengthen Community Involvement & Partnership

STRATEGIC ACTIONS

- a) Engage the community by providing volunteer and educational experiences for people, including youth and families to discover, learn about, protect and restore parks and trails.
- b) Foster and initiate partnerships and expand volunteer opportunities.

CHUM SALMON SPAWNING - *Ayum Creek Regional Park Reserve, Vancouver Island.*

PHOTO BY: James R. Page
FLICKR PROFILE: wild prairie man



c) Integrate First Nations interests into planning for, and management and stewardship of, regional parks and trails.

- Undertake a visitor use survey.
- Undertake a survey of residents.

Strategic Priority 4: Prepare for Future Land Acquisitions

STRATEGIC ACTION

- In partnership with other CRD departments, First Nations and the federal and provincial

government prepare a sensitive ecosystem inventory for land west of Sooke River.

- Prepare a land acquisition strategy and examine acquisition options to achieve the future regional parks and trails system.
- Prepare a boundary rationalization plan for recent land acquisitions prior to park dedication and declare land that does not have regional park or trail value as surplus and sell these lands. Proceeds from the sale of the surplus lands would be used for further park or trail acquisitions.

Strategic Priority 5: Promote the Health Benefits of Regional Parks & Trails

STRATEGIC ACTION

- Partner with other levels of government and health agencies to promote the health benefits to the community of regional parks and trails.
- Undertake a study on the natural capital value of regional parkland.
- Focus programs on engaging youth and families in park activities.

8.5 looking forward: 2012 to 2021

- Provide more accessible opportunities for people of all ages and abilities to connect with nature.
- Partner with CRD Regional Planning to advance Regional Parks interests (ecological, human health, outdoor recreation and education) into planning for regional sustainability.

Strategic Priority 6: Engage in Planning for Regional Sustainability

STRATEGIC ACTION

- Bring forward, as part of the process to prepare the Regional Sustainability Strategy, the discussion of the concept that at least half of the region's land base be managed for the conservation of nature.

The focus of the strategic directions and actions in this plan extend for five years to 2016. In 2016, a mid-term check-in will be conducted on the status of the Strategic Plan and strategic priorities will be reassessed for the next five-year period: 2017 to 2021.

2016 will also mark the 50th anniversary of Regional Parks; in 2014 planning will commence to determine how best to celebrate this milestone in the community.



PARRY BEACH - *Devonian Regional Park is an oceanfront nature sanctuary and home to a wide variety of birds, especially migrating waterfowl.*

PHOTO BY: Bill Irvine
FLICKR PROFILE: wjis21

references

- 1 Capital Regional District, draft Conservation Strategy for CRD Regional Parks, 2010.
- 2 Nature Conservancy of Canada, Salish Sea Conservation Plan, 2010.
- 3 Nature Conservancy of Canada, Salish Sea Conservation Plan, 2010.
- 4 Capital Regional District, Regional Parks; Terms of Reference for Preparing the Regional Parks Strategic Plan, March 2009.
- 5 Capital Regional District, Report in the Consultation for Preparation of the Regional Parks Strategic Plan, May 2010 and June 2011.
- 6 Capital Regional District, Draft Conservation Strategy for Regional Parks, 2010.
- 7 The Value of Parks: Inspire, Refresh, Conserve, Protect, Play. Parks Forum 2008.
- 8 Last Child in the Woods, Richard Louv. Algonquin Books, 2005.
- 9 Measuring the Economic Value of a City Park System. The Trust for Public Land. 2009.
- 10 Natural Capital in BC's Lower Mainland. Pacific Parklands Foundation and David Suzuki Foundation. 2010.
- 11 Capital Regional District Parks, Visitor Use Survey.
- 12 Measuring the Economic Value of a City Park System. The Trust for Public Land. 2009.
- 13 The Value of Parks: Inspire, Refresh, Conserve, Protect, Play. Parks Forum 2008.

ENVELOPE
REQUIRED
FOR
MAILING

For more community sourced images of our beautiful regional parks, visit our Flickr photo group **Regional Parks Photography in the Capital Regional District** and feel free to add your own photographs taken in any regional park.

Citizen Advisory Panel
c/o Capital Regional District, Regional Parks
490 Atkins Avenue, Victoria BC V9B 2Z8
T: 250.478.3344 | www.crd.bc.ca/parks

www.crd.bc.ca

CRD
Making a difference...together

2012—2016

Financial Program to Implement the Regional Parks Strategic Plan

Capital Regional District | Approved by CRD Board June 13, 2012





2012—2016 Financial Program

The 2012 to 2016 Financial Program complements the 2012 to 2021 Regional Parks Strategic Plan and provides the fiscal roadmap to implement the actions identified under the six strategic priorities in the Strategic Plan (found on Appendix A, pages 9 to 12 of this Financial Program). The primary direction for Regional Parks over the next five years will be to strengthen the management of existing regional parks and trails while opening new parks and trails as funding permits.

The Financial Program provides guiding principles, an overview of the 2012 Regional Parks’ budget, the capital budget and potential budget requests that result from implementation of the first five years of the Strategic Plan. This Financial Program addresses the CRD Board request to identify the major capital and operational initiatives that are tied to the first five years of the Strategic Plan and the estimated cost to implement them. The Financial Program will also be used to guide the preparation of the Regional Parks’ budget.

The implementation of the Strategic Plan could be affected by changing circumstances such as Board priorities, economic conditions, other CRD initiatives and emerging opportunities. These in turn could affect the implementation sequence of the proposed Strategic Plan priorities and the Financial Program. Therefore, to remain current, the Financial Program will be updated annually.

Table of Contents

Executive Summary	1
Purpose	2
Financial Program Guiding Principles	2
Regional Parks Strategic Plan	2-3
Regional Parks Budget	3
Operating Budget	3
Capital Budget	5
Potential Budget Requests.....	5
Financial Challenges Facing	
Regional Parks	6
Looking Forward	7
Conclusions	7
Appendices	9-12

Purpose

A complement to the 2012 to 2021 Regional Parks Strategic Plan, this 2012 to 2016 Financial Program identifies the estimated financial cost to implement the 26 actions identified under the six strategic priorities in the Regional Parks Strategic Plan.

Financial Program Guiding Principles

The primary direction for Regional Parks over the next five years as identified in the Regional Parks Strategic Plan will be to strengthen the management of existing regional parks and trails while opening new parks and trails as funding permits.

To achieve effective financial management, Regional Parks financial programming will be guided by the following principles:

- take a focused approach guided by the Regional Parks Strategic Plan, Land Acquisition Strategy and park and trail management plans;
- work within the division's' financial and human resource capacity;
- continue to examine and apply budget efficiencies and adjust resources as necessary;
- maintain land acquired for new parks or trails as a "reserve" and only open the reserve lands as financial resources permit; and
- initiate partnerships to increase revenue.

Regional Parks Strategic Plan

The 10-year Regional Parks Strategic Plan (2012 to 2021) provides the fundamental organizational direction: what Regional Parks does, what are the most important opportunities and challenges to which the organization needs to respond and what are the right priorities to move the organization forward. This plan establishes a management direction that defines the long term, "big picture" framework within which policy, fiscal, administrative and strategic decisions will be made.





The Strategic Plan identifies six priorities for the first five years (2012 to 2016):

- Strengthen the Management of Existing Parks & Trails
- Strategically Plan for and Open Existing Land-Banked Regional Parks and Trails as Resources are Approved
- Strengthen Community Involvement and Partnership
- Prepare for Future Land Acquisitions
- Promote the Health Benefits of Regional Parks & Trails
- Engage in Planning for Regional Sustainability

Within these six priorities there are a variety of actions identified for the first five years and they are presented in Appendix A. Completing the actions will be a measure of how Regional Parks is progressing toward achieving its vision, mission and management goals. The strategic priorities and actions inform the financial program, business and budget planning and provide concrete direction for annual work plans.

Implementation could be affected by changing circumstances, economic conditions, political direction, other CRD initiatives and emerging opportunities. These in turn could affect the implementation sequence of the proposed actions and the financial program. Therefore, to remain current, the Financial Program will be updated annually.

Regional Parks Budget

Operating Budget

The total 2012 Regional Parks Budget is \$9,892,130. Funding for this budget comes as \$9,074,960 in property taxes and \$817,170 in other forms of revenue such as fees and grants in lieu of taxes. In 2012, Regional Parks will derive 91.7 percent of its budget revenue from property taxes and 8.3 percent from other revenue.

Revenue

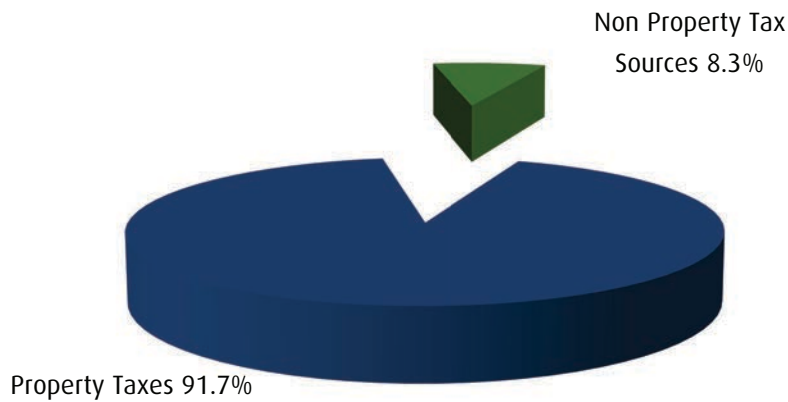


Figure 1: 2012 Budget - Sources of Revenue

Expenditures

The main expenditure areas are regional park operating services, land acquisition and debt servicing/transfer to reserves.

Regional Parks' operating services include three areas: (1) Park Operations, (2) Planning, Resource Management and Development, and (3) Visitor Services and Community Development. The cost for these services in 2012 is \$6,235,970 or 63 percent of the Regional Parks' budget.

Land acquisition fund accounts for 29 percent or \$2,841,170 of the Regional Parks' expenditure budget. It is estimated that by 2014 the fund will generate approximately \$3.5 million per year. This funding level is proposed to be maintained to 2019. With existing land acquisition financial commitments, Regional Parks will not have significant funds to acquire new land until 2016.

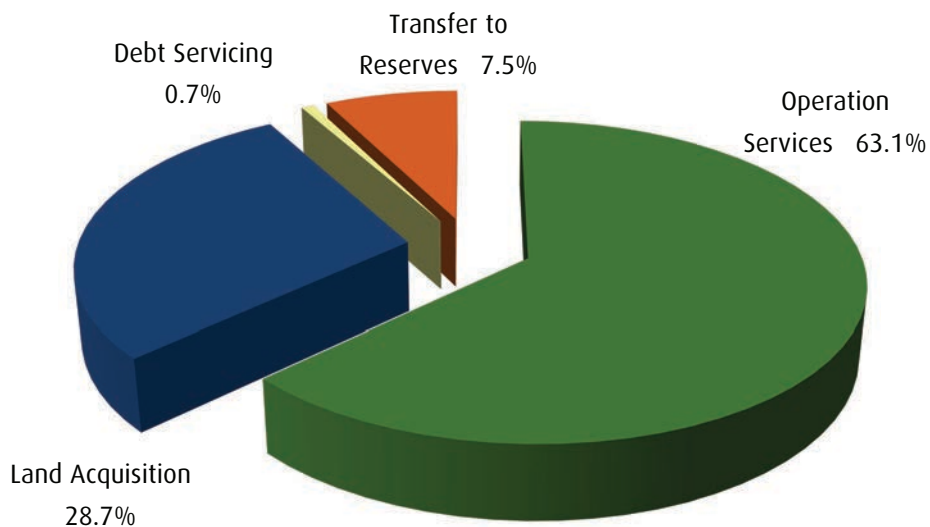


Figure 2: 2012 Budget - Expenditures



Capital Budget

The 2012 - 2016 Capital Infrastructure Plan identifies new capital projects with an estimated cost of \$21 million. This is based on upgrading existing infrastructure and providing new infrastructure to open park and trail reserves. The major infrastructure projects are the E&N Rail Trail Humpback Connector, opening part of the Sea to Sea Green Blue Belt and Sooke Hills Wilderness regional park reserves, opening the Trans Canada Trail and Matthews Point regional park reserves and upgrading existing infrastructure at Thetis Lake and Elk/Beaver Lake regional parks. The estimated operating cost to open new parks and trails is provided in Appendix A.

It is important to note that the Capital Infrastructure Plan primarily relies on obtaining grants from senior levels of government and through other third party funding and using capital reserve funds. No budget requests are proposed for capital projects. If grant money is not available, the Capital Infrastructure Plan may need to be amended by deferring projects or funding the capital projects through requisition. This in turn could affect supplementary budget requests.

Potential Budget Requests

Funding to implement the Regional Parks Strategic Plan will, from time to time, result in additional budgetary requests. Potential budget requests are identified for the next five years in Appendix A and would provide:

- operating funds to open part of the E&N Rail Trail, Sea to Sea Green Blue Belt and Sooke Hills Wilderness
- operating funds to open the Trans-Canada Trail and Jordan River and Matthews Point regional parks;
- ecological information to protect, restore and manage the natural environment; and
- information about park and trail visitors (i.e., their views, needs and expectations) so that the right services and facilities can be delivered.

The costs in Appendix A for operating new park and trail are broad estimates. These costs will be refined based on the park or trail management plan. A detailed financial plan will complement each management plan when submitted to the Board. Therefore, the identification of these potential budget items within this Financial Program is meant to be a guide rather than fixed direction for annual budgeting and is subject to Board approval.

Financial Challenges Facing Parks

Like many other park agencies, Regional Parks faces financial challenges.

- Over the past 10 years, Regional Parks has acquired 4,480 hectares of land. Some of the land is held as reserve and requires new services and facilities before it can be opened. There are also costs to manage the land while in park or trail reserve status.
- Citizens have informed Regional Parks that they expect a certain level of services, well-maintained facilities and a protected natural environment. The challenge is to meet these public expectations in a fiscally responsible manner while balancing priorities and meeting citizens' expectations.
- In 2010, the Land Acquisition Fund was extended for 10 more years. The \$2/year per average household assessment increase to the fund will result in an approximate 4 to 5.5 percent annual increase in the Regional Parks requisition until 2014. The land acquisition priority could reduce the availability of funds for other Strategic Plan initiatives.
- Visitor use of regional parks and trails continues to increase. In 2011, regional parks and trails recorded a total of 5.45 million visits which is an overall increase of 4.57 percent from 2010. This has resulted in an increase in services such as garbage pickup and bylaw enforcement and an increased attention to environmental protection.
- The development of the E&N Rail Trail provides a significant financial challenge for Regional Parks. The development is proposed in five phases and the total estimated development cost is \$36 million. Opening of the trail will also result in costs for operation and maintenance. So far the majority of development costs have been paid for from the federal gas tax funding program and other federal and provincial grants. Depending on future funding from other levels of government, the CRD may need to contribute more funds for development.
- Some major facilities in existing parks and trails need to be replaced or upgraded. In addition, new facilities, as well as new services, will be required if the Board decides to open park or trail reserves. Demand for capital funding is often greater than available funding.



- Regional Parks is facing higher operating costs as a result of increasing costs for materials, equipment and services. The Regional Parks 2012 Budget projects approximately a two percent increase in the core operating budget for each of the next five years for the current system of opened parks and trails.
- In addition to today's economic climate, there are competing capital priorities across the CRD. This creates budget pressures for all CRD services and the entire CRD budget.

Looking Forward

The regional parks and trails network contributes to the sustainability of the region. Through the Strategic Plan and Financial Program, Regional Parks is committed to continue the provision of services in the most efficient manner. This Financial Program has been developed to ensure that park and trail infrastructure and the natural environment are continually sustained and enhanced in a fiscally responsible way. The Financial Program will continue to evolve and will be updated on an annual basis to mirror the Strategic Plan and Board's vision. The Financial Program will also be updated annually to ensure the delivery of core services is continued in a prudent fashion.

Conclusion

The 2012 to 2016 Financial Program identifies the major capital and operational initiatives that are tied to achieving the Strategic Plan and the estimated cost to implement the initiatives. This fiscal management approach will help achieve the overall goal over the next five years of providing infrastructure and services for citizens to enjoy parks and trails while protecting the environment.

The Financial Program lays out a path to effectively move Regional Parks forward in a fiscally responsible manner while having the flexibility to respond to changing circumstances and Board priorities. These changes in turn could affect the implementation sequence of the proposed Strategic Plan actions and the Financial Program. To remain current, the Financial Program will be updated annually.





Appendix A:

Strategic Plan Priorities and Estimated Cost for Implementation (2012-2016)

Strategic Priority 1 Strengthen the Management of Existing Parks & Trails			
Strategic Actions	Estimated Cost		Year
	Continuous Supplementary	One-Time Supplementary	
Upgrade, maintain, repair or replace major facilities. (Cost identified in section 4, Capital Budget pages.)	n/a (n/a means that any associated cost will be covered in the Regional Parks' core budget).	n/a	2012 - 2016
Cultivate partnerships, explore new approaches and adopt best practices and technologies.	n/a	n/a	2012-2016
Explore opportunities for generating non-tax revenue.	n/a	\$20,000	2013
Complete or update park and trail management plans for priority parks and trails.	n/a	\$60,000	2013 and 2015 (\$30,000/year)
Complete ecological inventories and conservation plans for priority parks and address priority conservation issues.	n/a	\$100,000 (based on \$25,000/year for four years)	2013 - 2016
Collaborate on the development of a regional natural area connectivity plan.	n/a	\$25,000	2014
Complete asset, maintenance and operation plans.	n/a	\$50,000	2013
Develop an environmental education plan, and provide leadership in a review of interpretive facilities in the region.	n/a	\$25,000	2015
Develop an outdoor recreation strategy.	n/a	\$25,000	2014

Strategic Priority 2

Strategically Plan for and Open Existing Land-Banked Regional Parks and Trails as Resources are Approved

Strategic Actions	Estimated Cost		Year
	Continuous Supplementary	One-Time Supplementary	
Develop a park and trail opening strategy. (The proposed opening timetable is provided in Appendix B.)	\$320,000 (Estimated Operating Costs)	\$180,000 (Capital equipment purchase)	See Appendix B
Continue construction of the E&N Rail Trail (dependent on grant funding and included in Capital Plan).	n/a	n/a	2012 - 2016
In partnership with other public agencies, local government and private landowners, initiate planning for the regional trails system on Salt Spring Island and Southern Gulf Islands.	n/a	n/a	2014 - 2015

Strategic Priority 3

Strengthen Community Involvement & Partnership

Strategic Actions	Estimated Cost		Year
	Continuous Supplementary	One-Time Supplementary	
Engage the community by providing volunteer and educational experiences for people, including youth and families to discover, learn about, protect and restore parks and trails.	n/a	n/a	2012 - 2016
Foster and initiate partnerships and expand volunteer opportunities.	n/a	n/a	2012 - 2016
Integrate First Nations interests into planning for, and management and stewardship of, regional parks and trails.	n/a	n/a	2012 - 2016
Undertake a visitor use survey.	n/a	\$100,000 (\$50,000 per year for two years)	2013 and 2016
Undertake a survey of residents.	n/a	\$50,000	2015

Strategic Priority 4
Prepare for Future Land Acquisitions

Strategic Actions	Estimated Cost		Year
	Continuous Supplementary	One-Time Supplementary	
In partnership with other CRD departments, First Nations and the federal and provincial governments, prepare a sensitive ecosystem inventory for land west of the Sooke River.	n/a	\$125,000	2014
Prepare a land acquisition strategy and examine acquisition options to achieve the future regional parks and trails system.	n/a	n/a	2014
Prepare a boundary rationalization plan for recent land acquisitions prior to park dedication and declare land that does not have regional park or trail value as surplus and sell these lands. Proceeds from the sale of the surplus lands would be used for further land acquisitions.	n/a	n/a	2012 - 2013

Strategic Priority 5
Promote the Health Benefits of Regional Parks & Trails

Strategic Actions	Estimated Cost		Year
	Continuous Supplementary	One-Time Supplementary	
Partner with other levels of government and health agencies to promote the health benefits to the community of regional parks and trails.	n/a	n/a	2015
Undertake a study of the economic value of nature in regional parks.	n/a	\$25,000	2015
Focus programs on engaging youth and families in park activities.	n/a	n/a	2012
Provide more accessible opportunities for people of all ages and abilities to connect with nature.	n/a	n/a	2012 - 2016

Strategic Priority 6
Engage in Planning for Regional Sustainability

Strategic Actions	Estimated Cost		Year
	Continuous Supplementary	One-Time Supplementary	
Bring forward, as part of the process to prepare the Regional Sustainability Strategy, the discussion of the concept that at least half of the region's land base be managed for the conservation of nature.	n/a	n/a	2012 - 2013
Partner with CRD Regional Planning to advance Regional Parks' interests (ecological, human health, outdoor recreation and education) into planning for regional sustainability.	n/a	n/a	2012 - 2013
	Continuous Supplementary	One-Time Supplementary	
Total (2012 - 2016)	\$320,000	\$785,000	

Appendix B:

Proposed 2012 to 2016 Regional Park and Trail Opening Timetable

Regional Park or Trail	2012	2013	2014	2015	2016
E&N Rail Trail Phase 1					
Sea to Sea Green Blue Belt					
E&N Rail Trail – Phase 2 (4-Mile to Colwood Interchange – (subject to grant funding)					
Sea to Sea Green Blue Belt – Trails and Shields Lake Backcountry Facilities					
Jordan River Regional Park Reserve Facilities					
Matthews Point Regional Park Reserve Opening					
Trans Canada Trail – connection to Cowichan Valley Regional District					
E&N Rail Trail – Phase 3 (location subject to Board approval and grant funding)					

For more information:

CRD Regional Parks

490 Atkins Avenue, Victoria BC V9B 2Z8

T: 250.478.3344

www.crd.bc.ca/parks

Printed on 100% recycled paper

