



Asking the Tough Questions: Using an Equity Lens in Social Planning & Poverty Reduction

Canadian Institute of Planners
Elevation 2.0 Conference in Whistler
July 7, 2022

Victoria Barr
Lavleen Sahota
Celeste Zimmer
Elle Wayara



Introductions



Victoria Barr



Celeste Zimmer



Lavleen Sahota



Elle Wayara

Agenda



Introductions



Key concepts



Case studies - Boundary
Region and Delta



Key learnings from the field

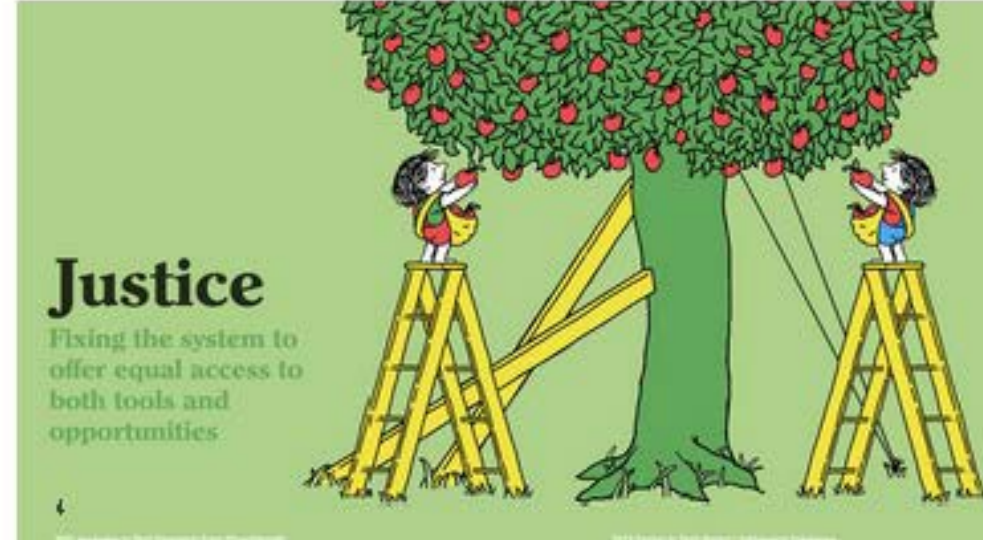
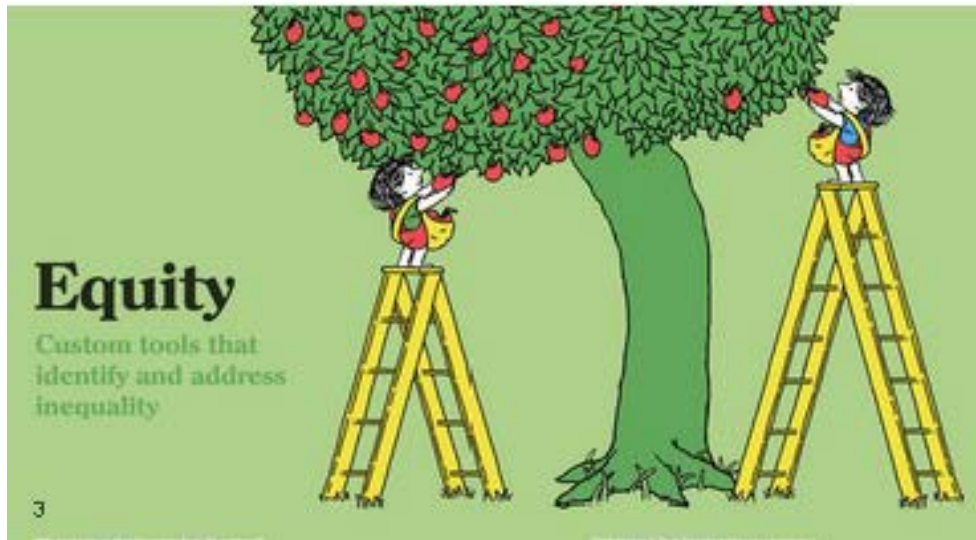
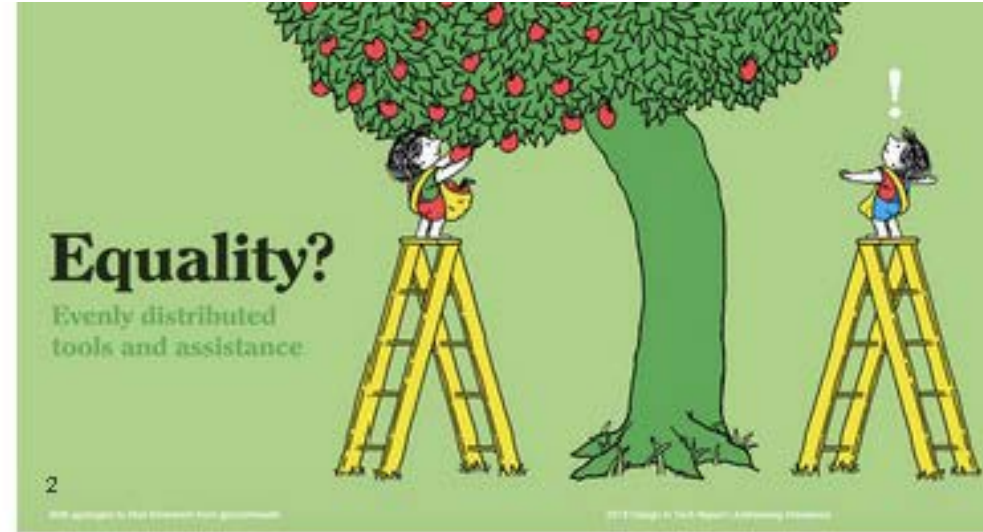
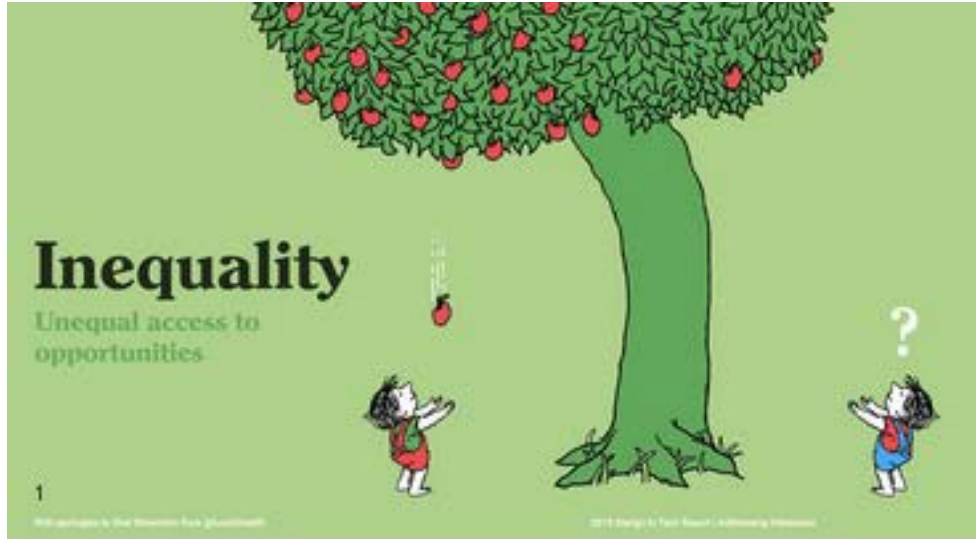


Questions



Key concepts

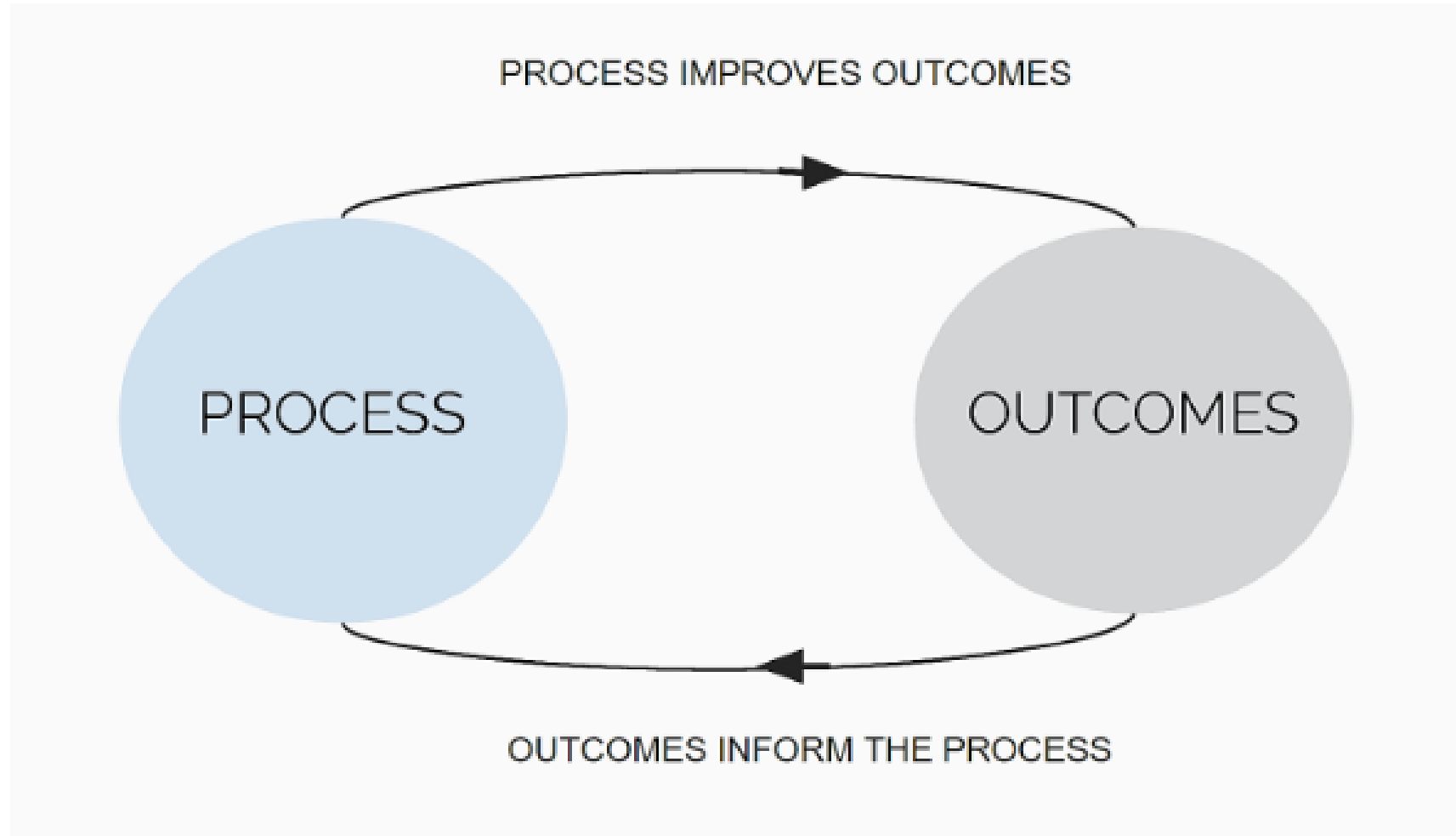
What is equity?

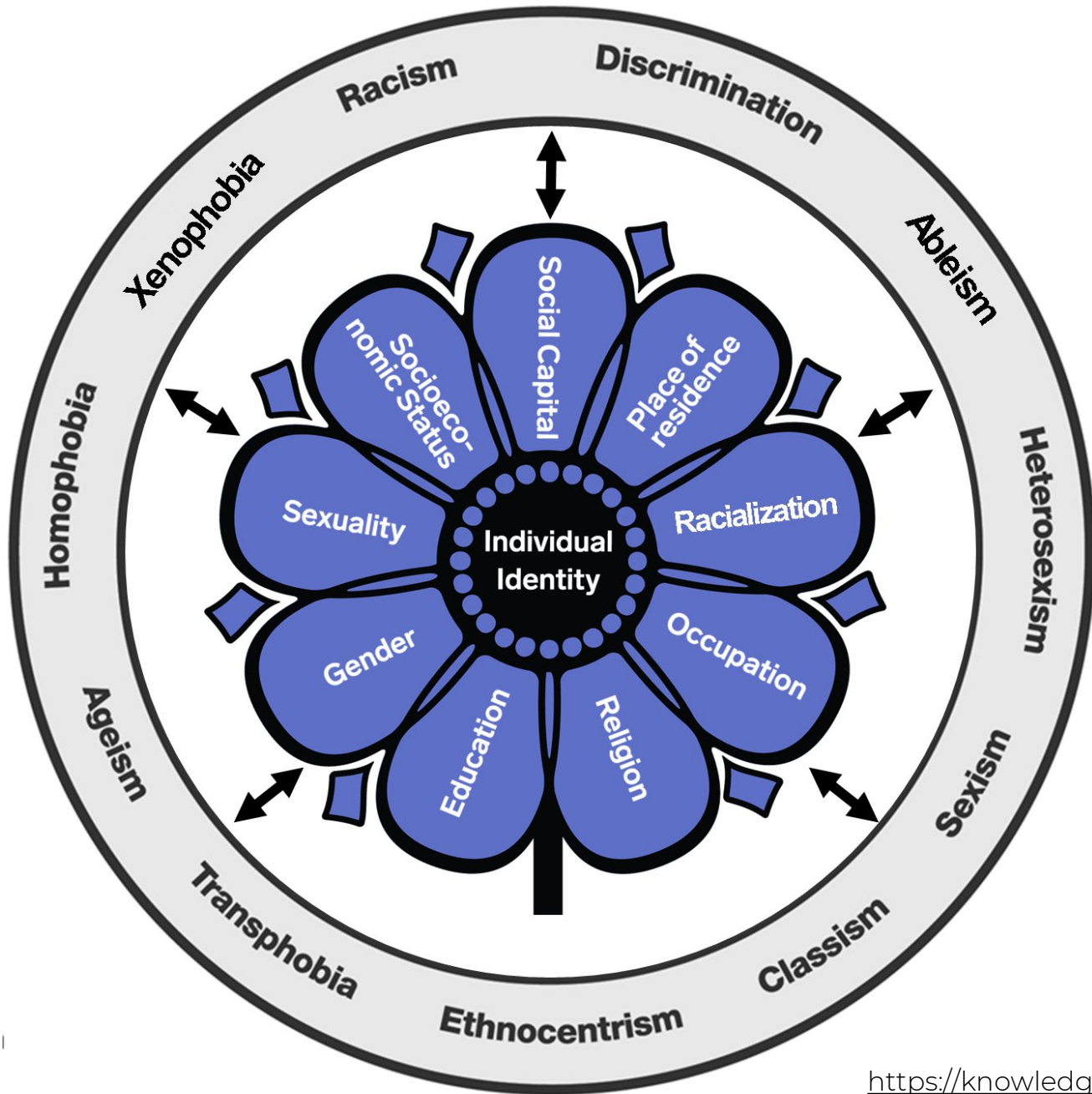


“Quit whining. It’s the same distance.”



Equity as a Process and an Outcome





Intersectionality

Lots of terms.....

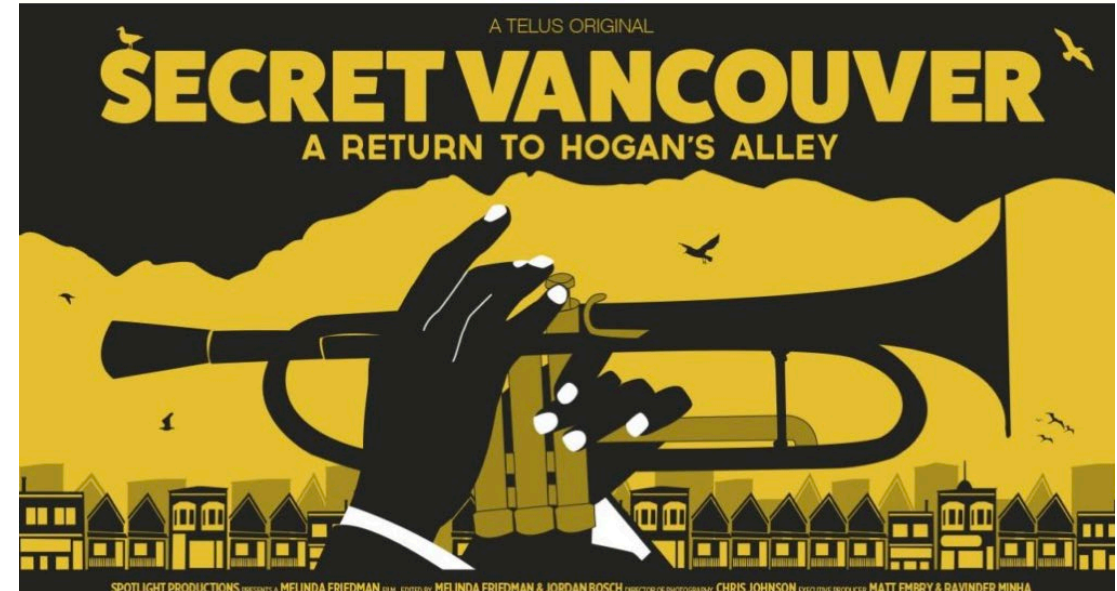
inclusivity
determinants of health
equity
levelup
marginalized
imbalance
racist
decolonization
poverty
diversity
social health
systemic discrimination
power
social planning
oppression
elements
intersectionality
equality

In the end, it's about power

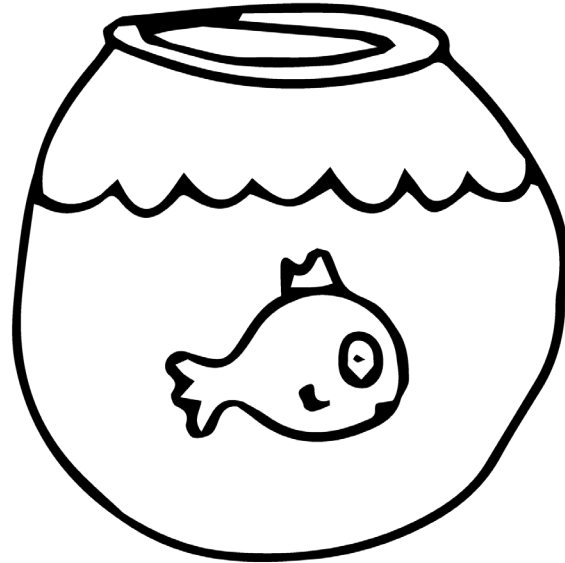
Racist Nature of the History of Urban Development in Canada



<https://humanrights.ca/story/the-story-of-Africville>

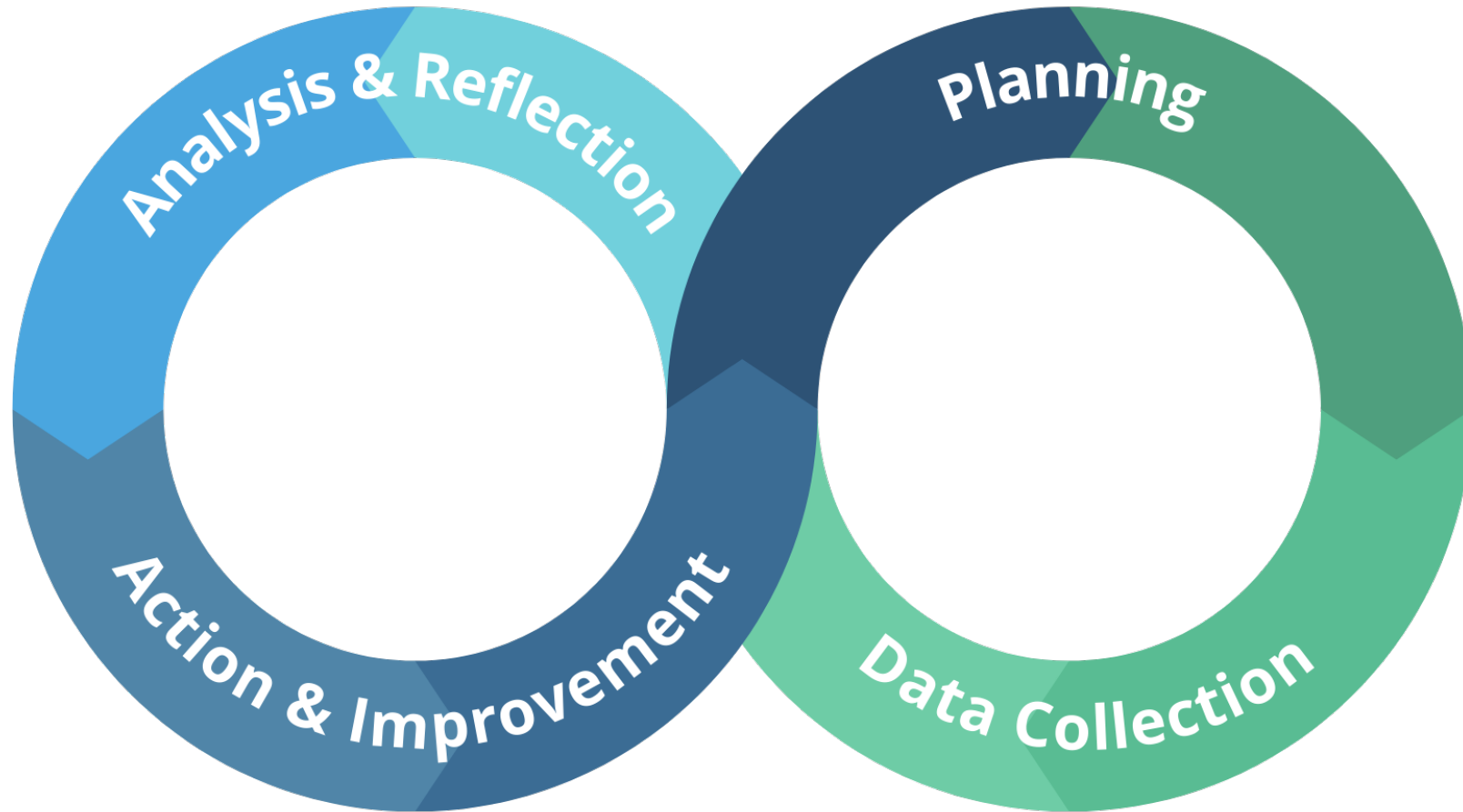


<https://www.hogansalleysociety.org/about-hogans-alley/>



THE LONGER YOU SWIM
IN A CULTURE, THE MORE
INVISIBLE IT BECOMES

Bias at every stage





Applying an equity lens means continually asking:

- Who will benefit from a policy, program, initiative or service?
- Who might be excluded from those benefits and why? Indeed, who might be harmed?
- How might some population groups be unfairly burdened today or in the future? How might existing privilege be further entrenched?
- Have important decisions been made with the direct input of those who will be most affected by those decisions?
- From whose perspective is the ‘success’ of the project or policy being evaluated?



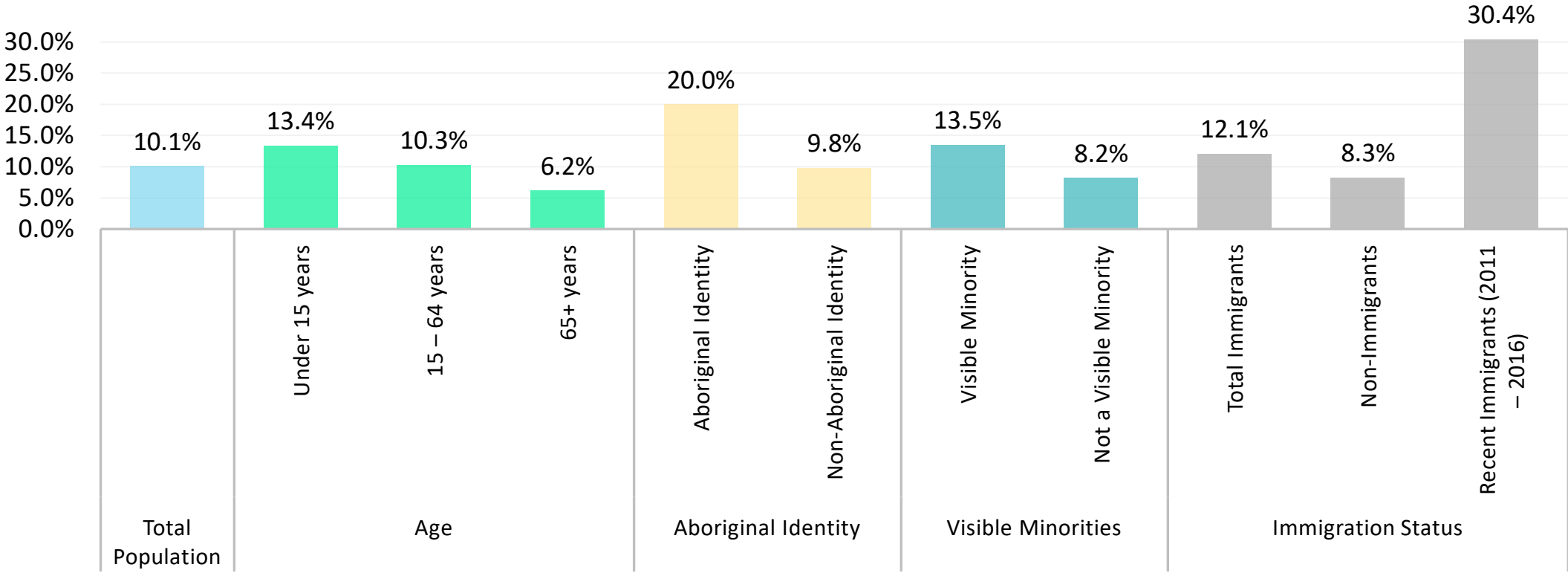
**Putting these
concepts into
practice...**

**Poverty is
about more
than income**



Poverty is Linked to Social Inequities

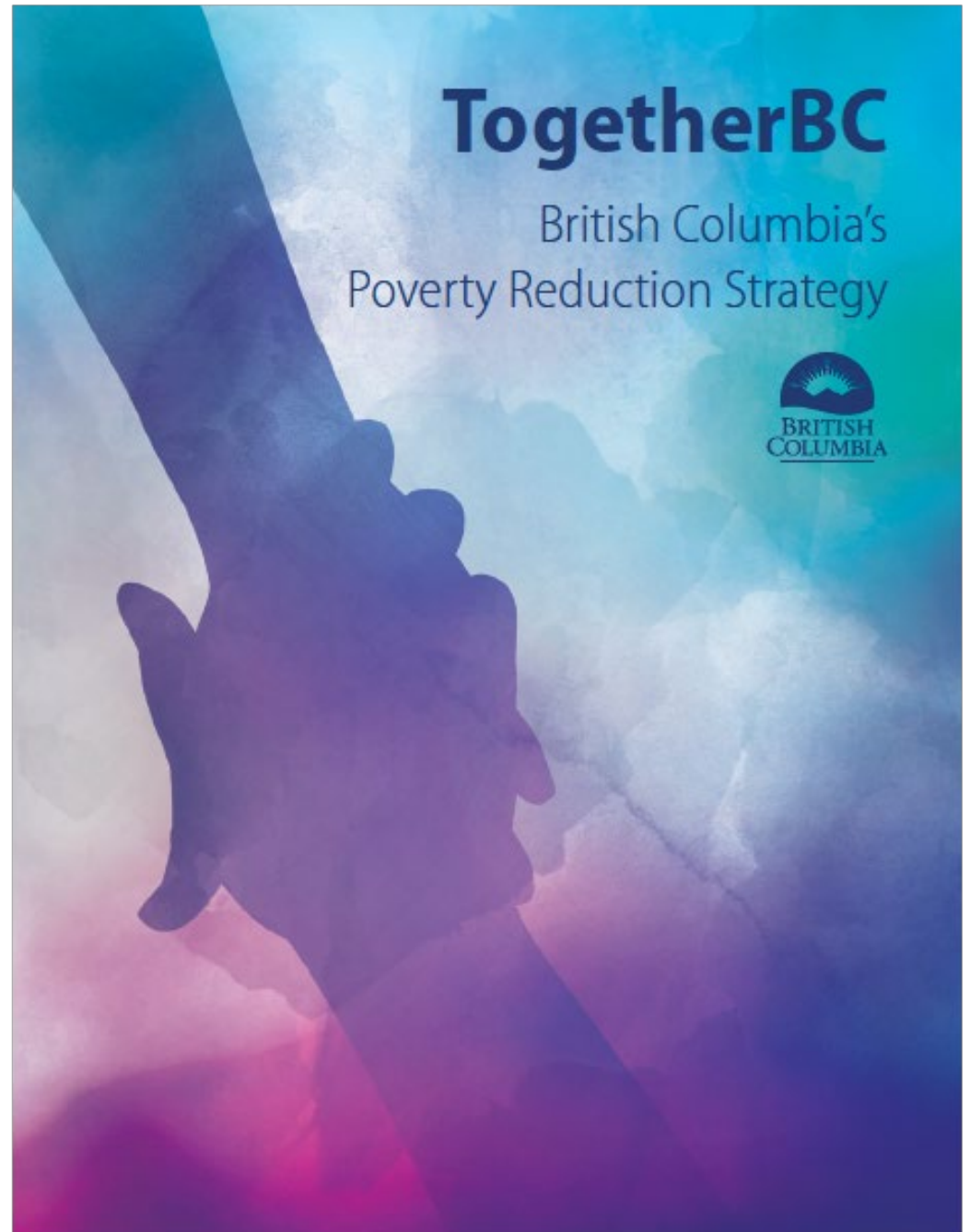
Delta Poverty Rate (using Market Basket Measure), by Population Group (%)



6 priority action areas:

- More affordable housing for more people
- Supporting families, children and youth
- Expanding access to education and training
- More opportunities, more jobs
- Improving income supports
- Investing in social inclusion

<https://www2.gov.bc.ca/gov/content/governments/about-the-bc-government/poverty-reduction-strategy>





Case Study #1

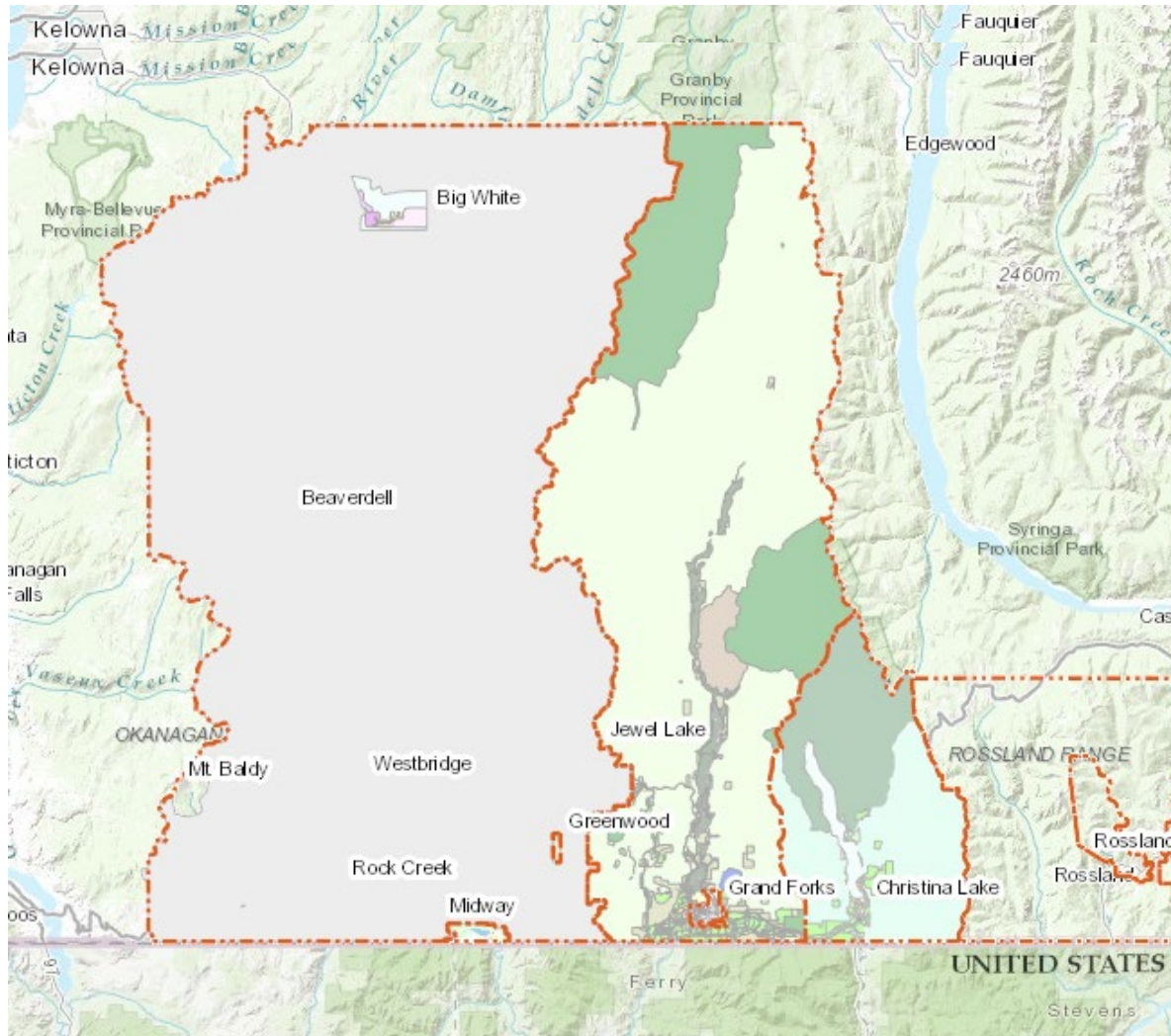
Boundary Regional Poverty Reduction Strategy



Boundary Region, BC

WELL-BEING IN THE BOUNDARY REGION:

A STRATEGY TO ELIMINATE POVERTY



Submitted to the Regional District of Kootenay Boundary

June 30, 2021

Case Study #2

Delta Poverty Reduction Strategy



The City of Delta, BC



Supporting Well-Being For All:
Delta Poverty Reduction Action Plan
April 2022



Poverty Reduction: Incorporating an Equity Lens

- Steering Committee
- Quantitative Data Collection for Community Profiles
- Community Engagement
- Data Analysis
- Reporting
- Relationships

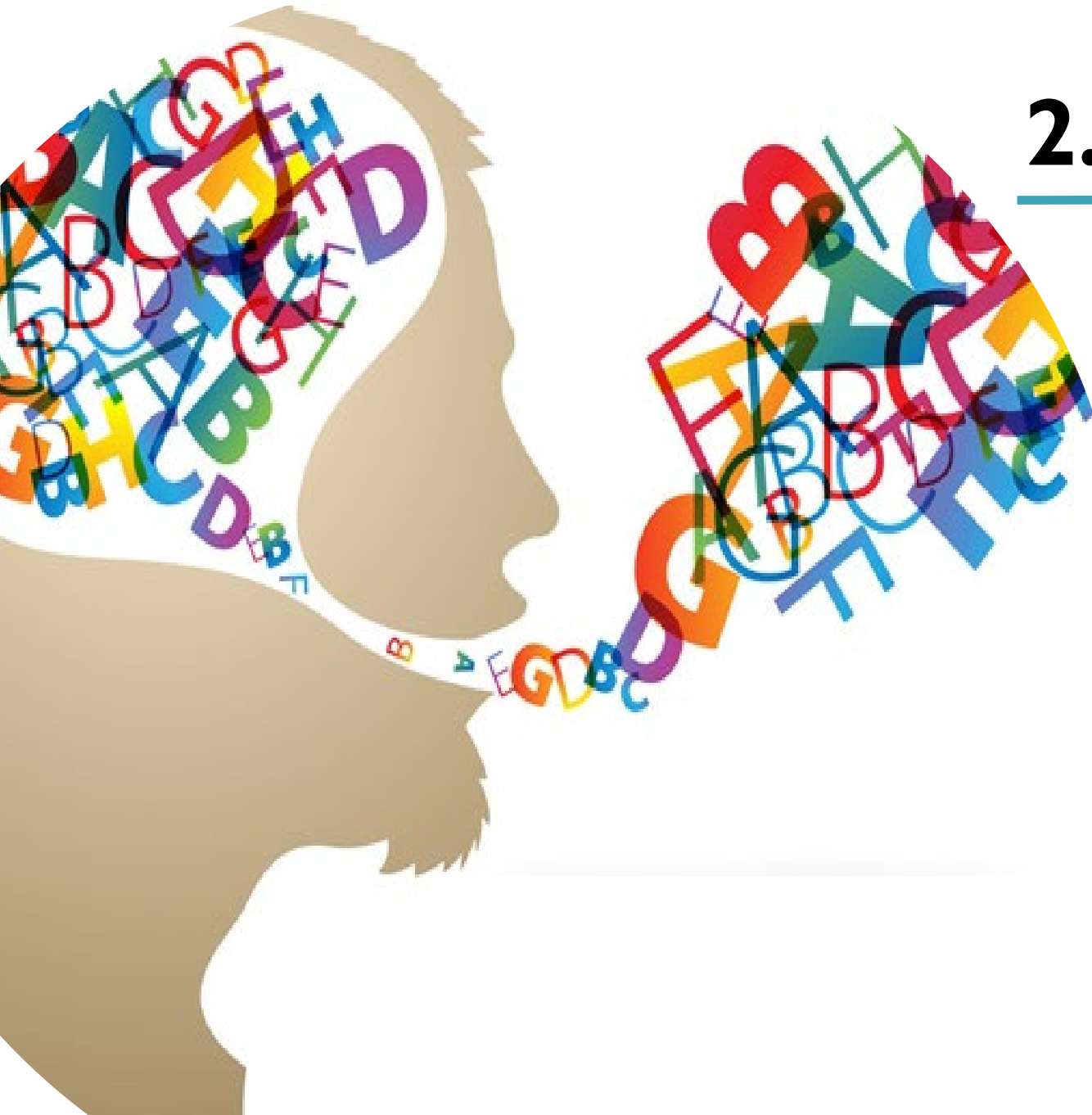




Integrating equity into social planning work – Key learnings from the field

I. Bring your whole self into the work





2. Language matters



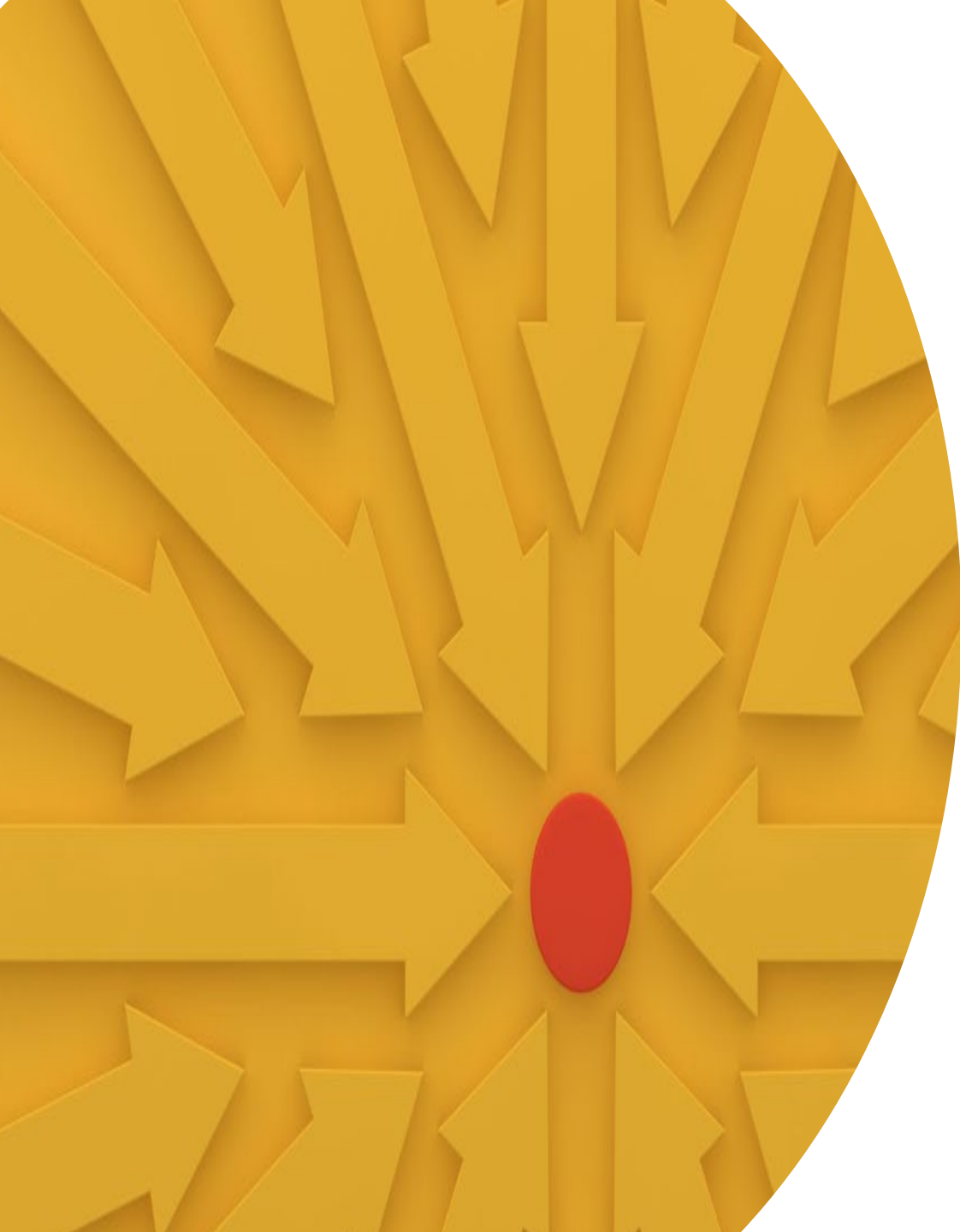
3. Meet people where they're at

4. Data can be great, but it must be questioned.



5. Question everything / dig deeper

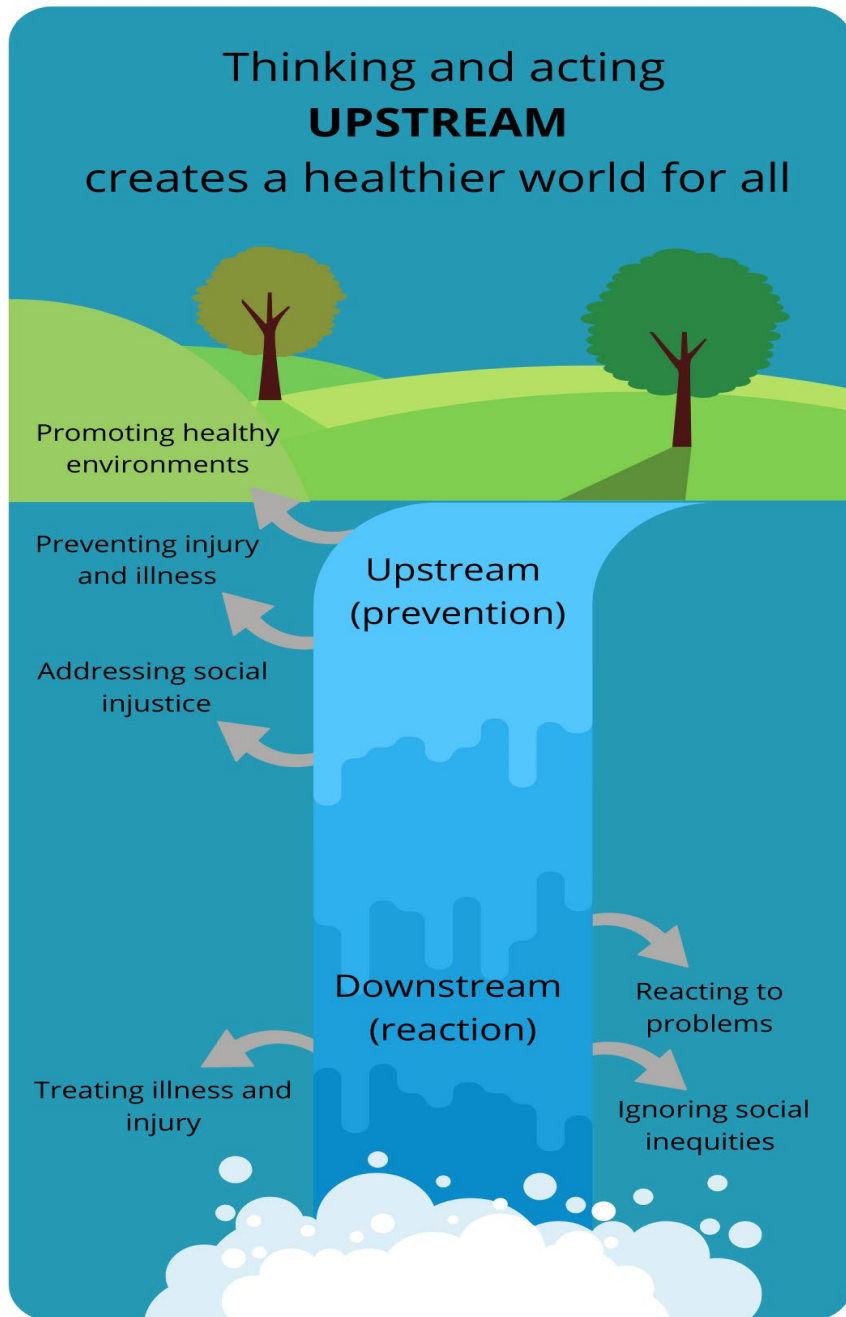




6. Work to define success together, then develop systems to determine whether you're getting there

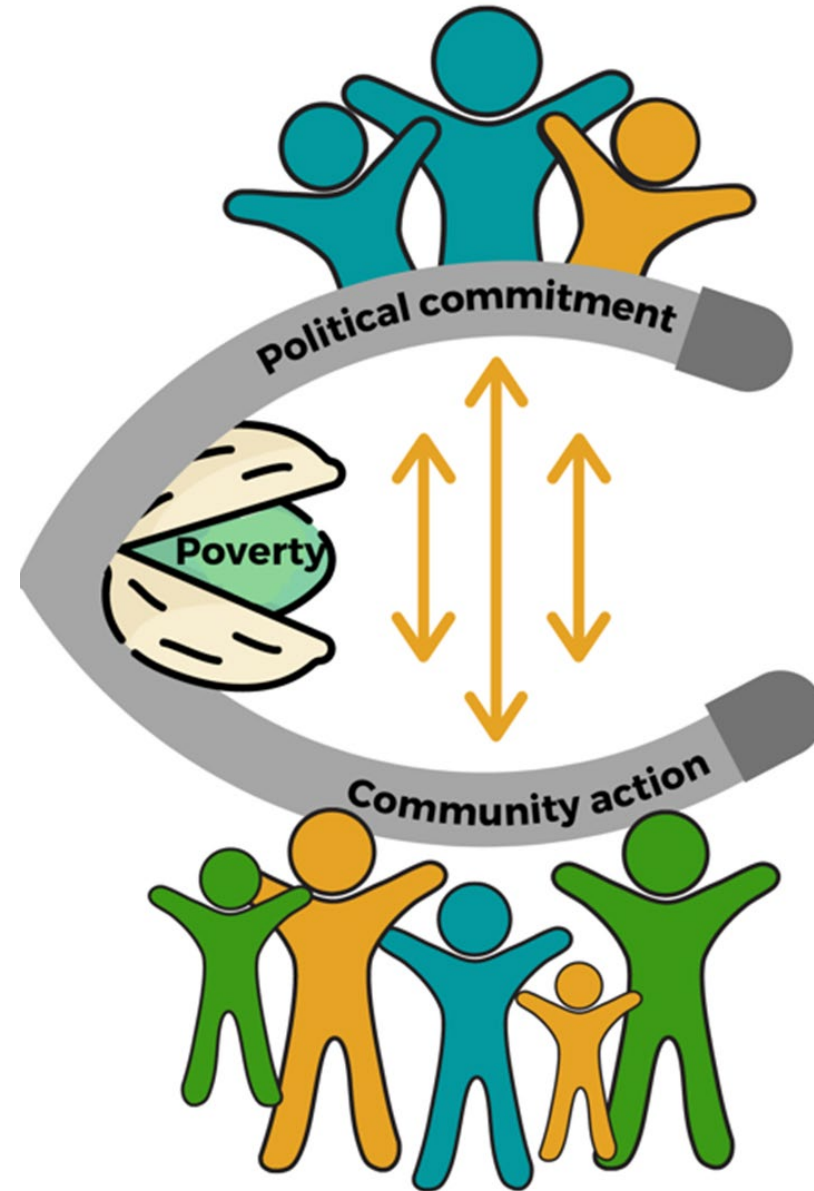
7. This work is all about relationships





8. Balance Upstream and Downstream Actions

9. Use a 'Nutcracker Approach'



Discussion

- When you're working in a system that is very political, how do you reconcile that environment with the need to question structural inequities?
- How do we advocate for social justice in a colonial system that is intertwined with racism, ableism, sexism, and classism?





Thank You

Please connect anytime:

www.levelupplanning.ca

Victoria@levelupplanning.ca

Lavleen@levelupplanning.ca

Celeste@levelupplanning.ca

Elle@levelupplanning.ca

