



Serving  
GOVERNMENT,  
serving  
CANADIANS.



# Parliamentary Precinct Master Plan in Focus

---

Canadian Institute of Planners Conference  
9 a.m. to 12 p.m. | July 3<sup>rd</sup>, 2019

NORR DIALOG

# Agenda

- 5**      **Opening Remarks and Introductions**
- 15**     **Presentation**
  - Project overview**
  - Planning Context**
  - What's Changed Since 2006**
  - Key Planning Considerations**
- 80**     **Site Tour**
- 80**     **Workshop: Opportunities for Further Exploration**
- 10**     **Group Discussion and Next Steps**

An aerial photograph of a city, likely Toronto, showing a mix of old and new architecture. In the foreground, a large, ornate Gothic-style building complex, possibly a university or government building, is visible. The building has multiple spires and a large central dome. To the right of this complex is a large green lawn. In the background, a dense urban area with modern skyscrapers and office buildings is visible. The sky is clear and blue. The text "PROJECT OVERVIEW" is overlaid in white, bold, sans-serif font on the left side of the image.

# PROJECT OVERVIEW



# Project Mandate

The background of the slide is a detailed architectural site plan of a Parliamentary Campus. The plan shows various buildings, courtyards, and green spaces. At the top, the Ottawa River (Rivière des Outaouais) is depicted. A central text box is overlaid on the plan, containing the project mandate. The plan includes labels for streets such as Wellington, Sparks, and Lyell, and building numbers like 1, 2, 9, 10, 11, 13, 21, 22, 24, 25, 26, 27, 28, and 36. The Ottawa River is labeled at the top center.

*Prepare a Master Plan building on the 2006 LTVP that will be an innovative, dynamic, visionary and flexible long-term planning framework to guide decision making about future growth, development, rehabilitation and infrastructure for an integrated Parliamentary Campus.*

- A&E Integrated Campus RFP





# Project Requirements



Accommodations  
(including IT, utilities)



Environmental  
Sustainability



Circulation & Mobility



Urban Design – Landscape,  
Universal Accessibility,  
Heritage, Public Realm



Material Management



Security



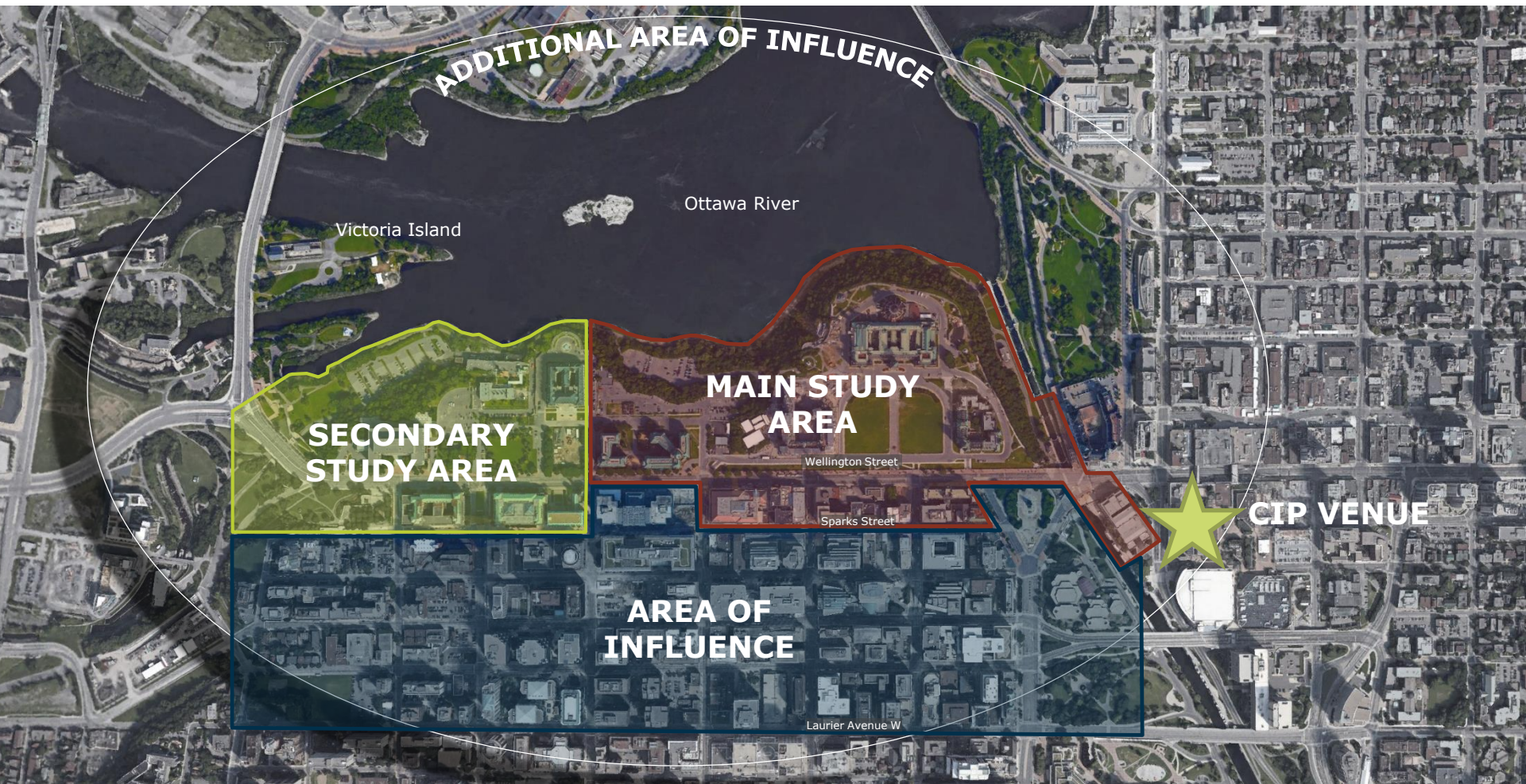
Visitor Experience



Connectivity

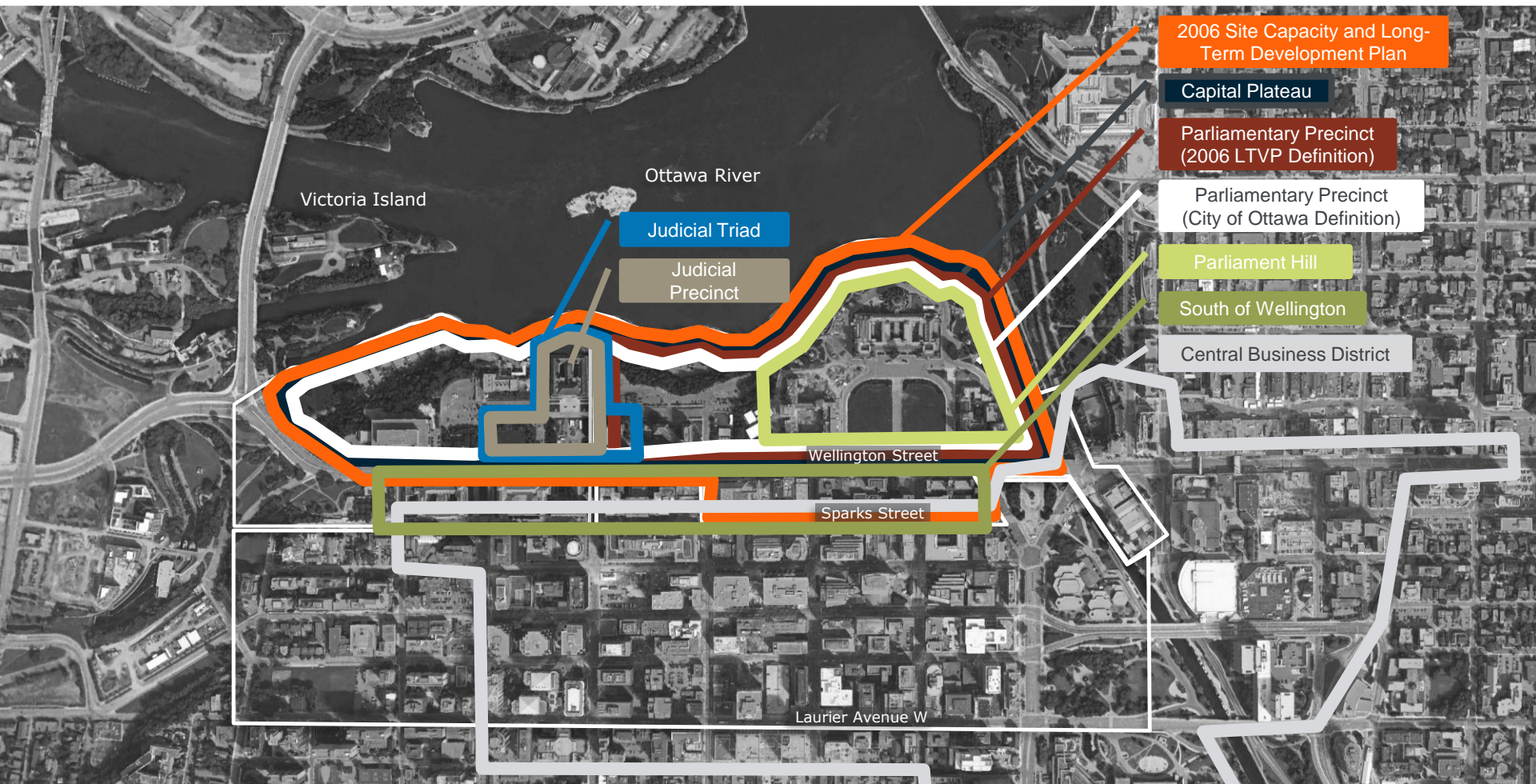


# Study Area





# Policy Areas





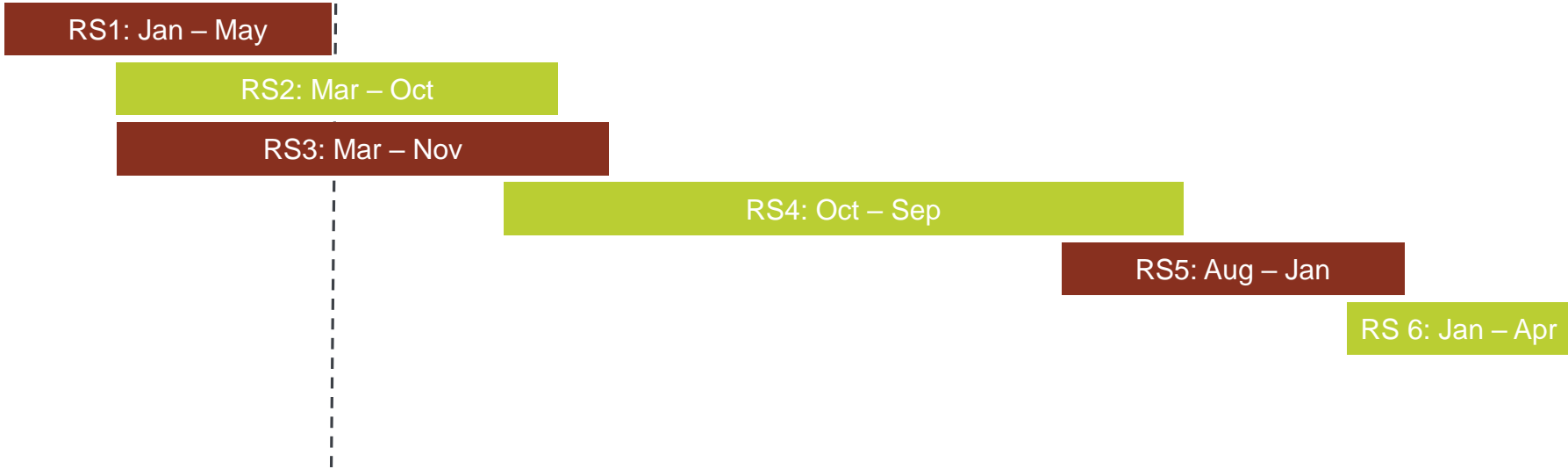
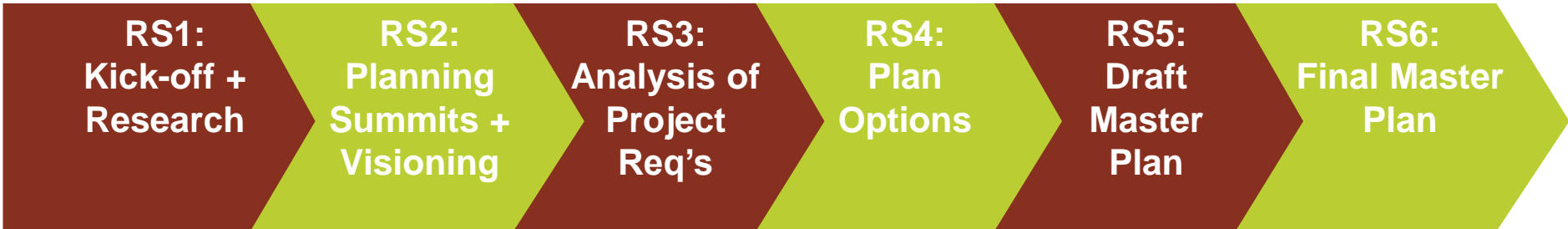
# 2006 Study Area



2006 Site Capacity and Long-Term Development Plan



# LTVP Update Process





# WHO ARE WE DOING THIS FOR?

---



Public Services and  
Procurement Canada

Services publics et  
Approvisionnement Canada

Canada 



# Canadians





# Parliamentarians



<https://lop.parl.ca/About/Parliament/GuideToHoC/index-e.htm>

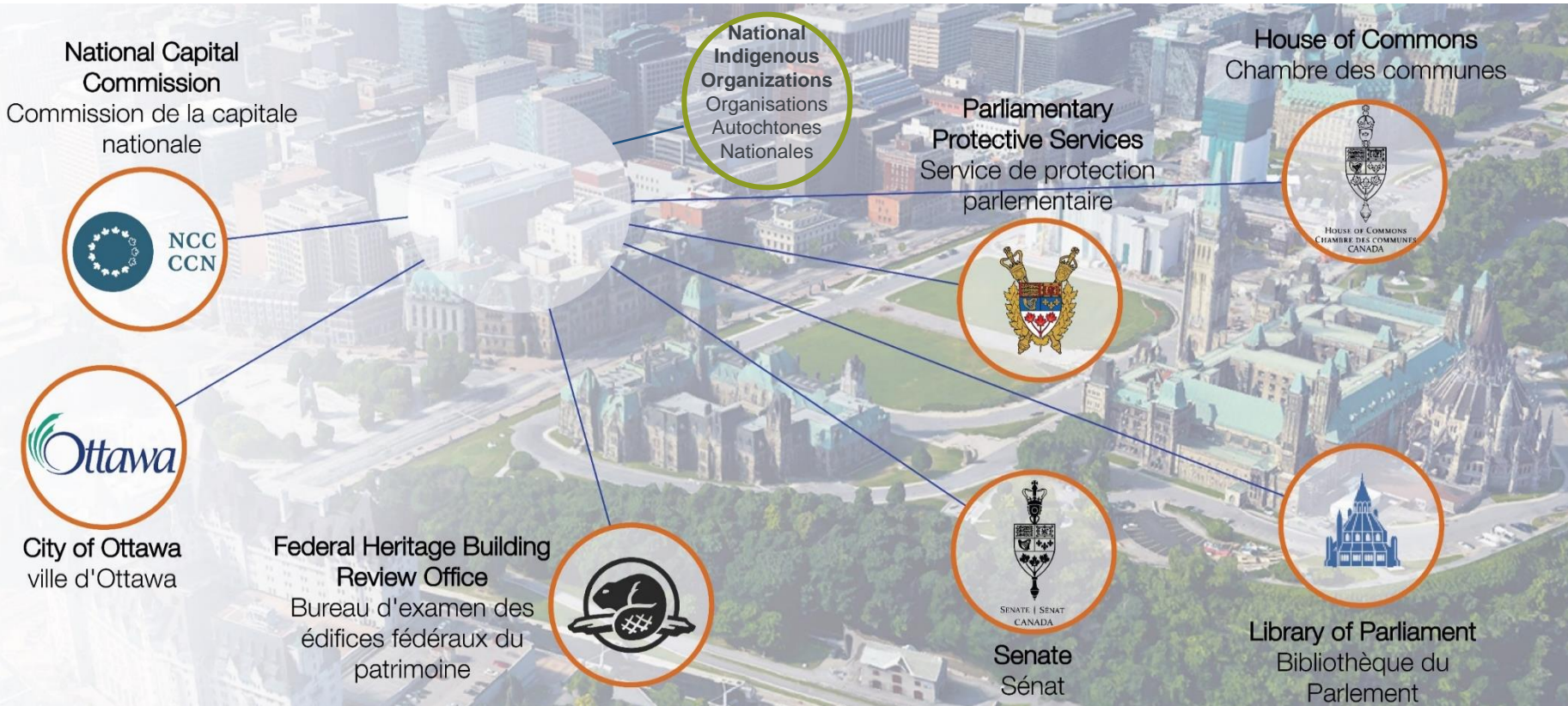


[https://lop.parl.ca/About/Parliament/senatoreugeneforse/inside\\_view/parliament\\_in\\_action\\_text-e.html](https://lop.parl.ca/About/Parliament/senatoreugeneforse/inside_view/parliament_in_action_text-e.html)





# Partners + Stakeholders







**WHERE WE  
(THE PRECINCTS)  
HAVE BEEN**



# Pre-European Settlement

One of the earliest maps of New France, dated 1657, showing the importance of Ottawa River as an inland route. Present-day Ottawa is near the word 'Algom'.

(Julian Smith & Associates, 1999)

Map Reference  
Library and Archives Canada  
Novae Franciae accurata delineatio  
1657 Francesco Giuseppe Bressani  
MIKAN no. 3805607

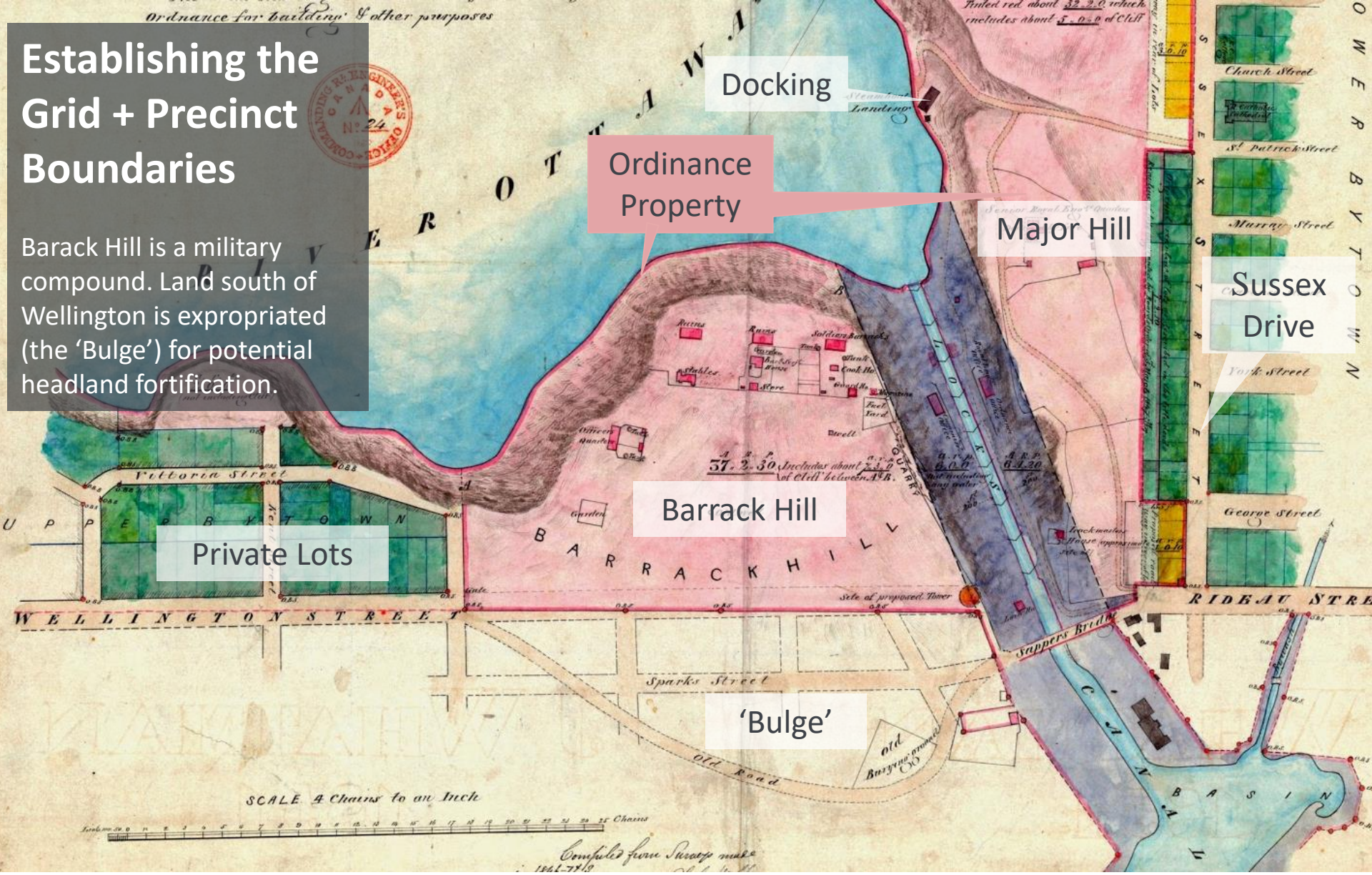
1657





# Establishing the Grid + Precinct Boundaries

Barack Hill is a military compound. Land south of Wellington is expropriated (the 'Bulge') for potential headland fortification.



Docking

Ordinance Property

Major Hill

Sussex Drive

Private Lots

Barrack Hill

'Bulge'



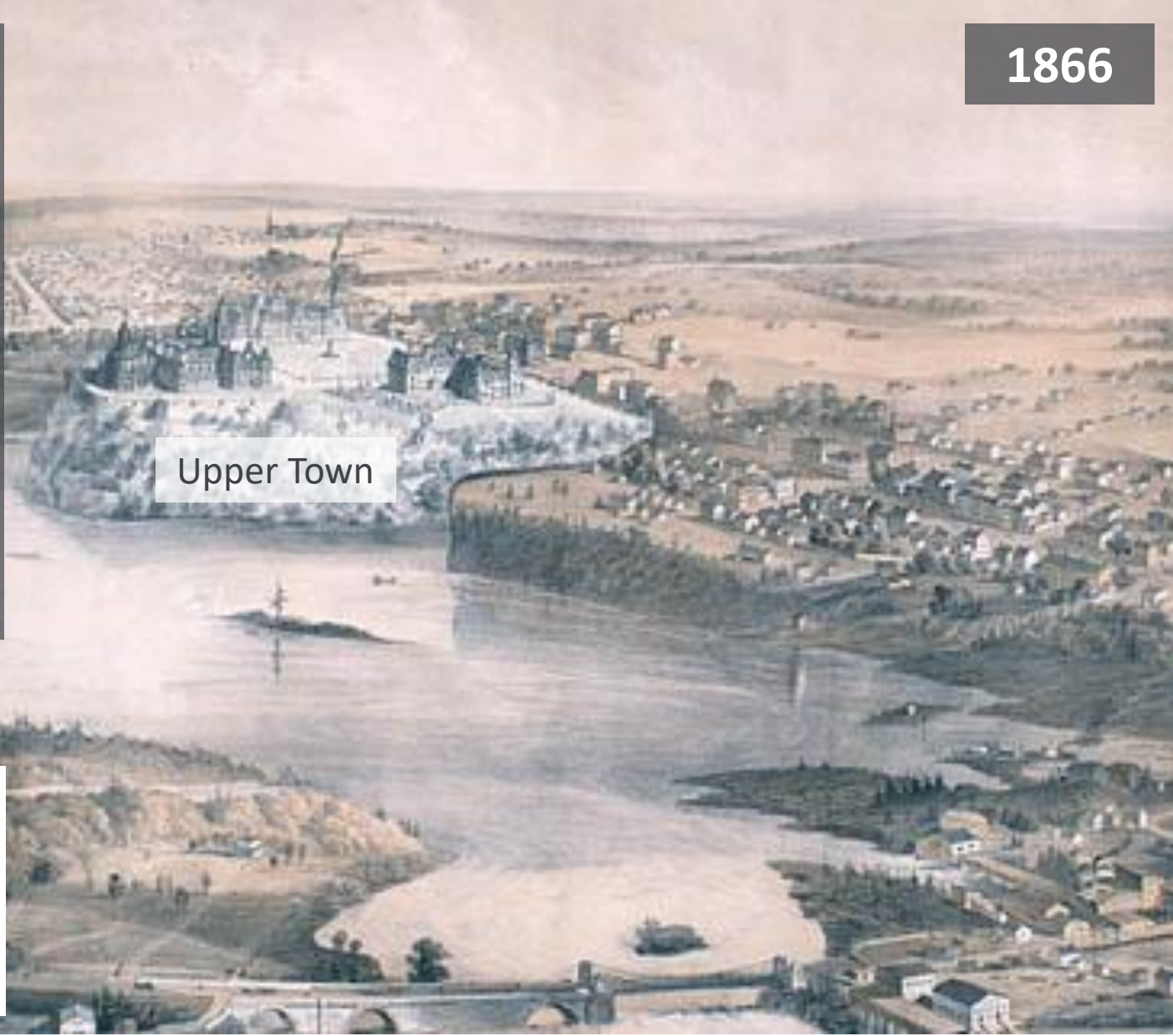


# Arrival of Parliament

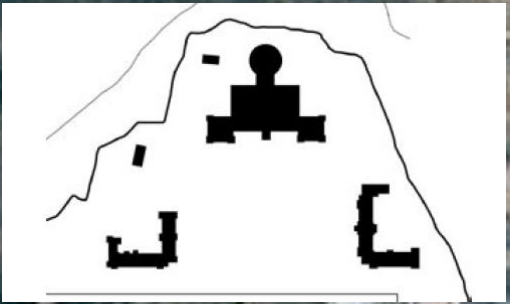
Ottawa declared Capital of Canada by Queen Victoria.

Parliament Buildings constructed in Civic Gothic Style. By 1888, all non-essential departments had to move out due to lack of space.

(Diagram: LTVP 2006, Appendix B)  
(Image : Queens University)



Upper Town

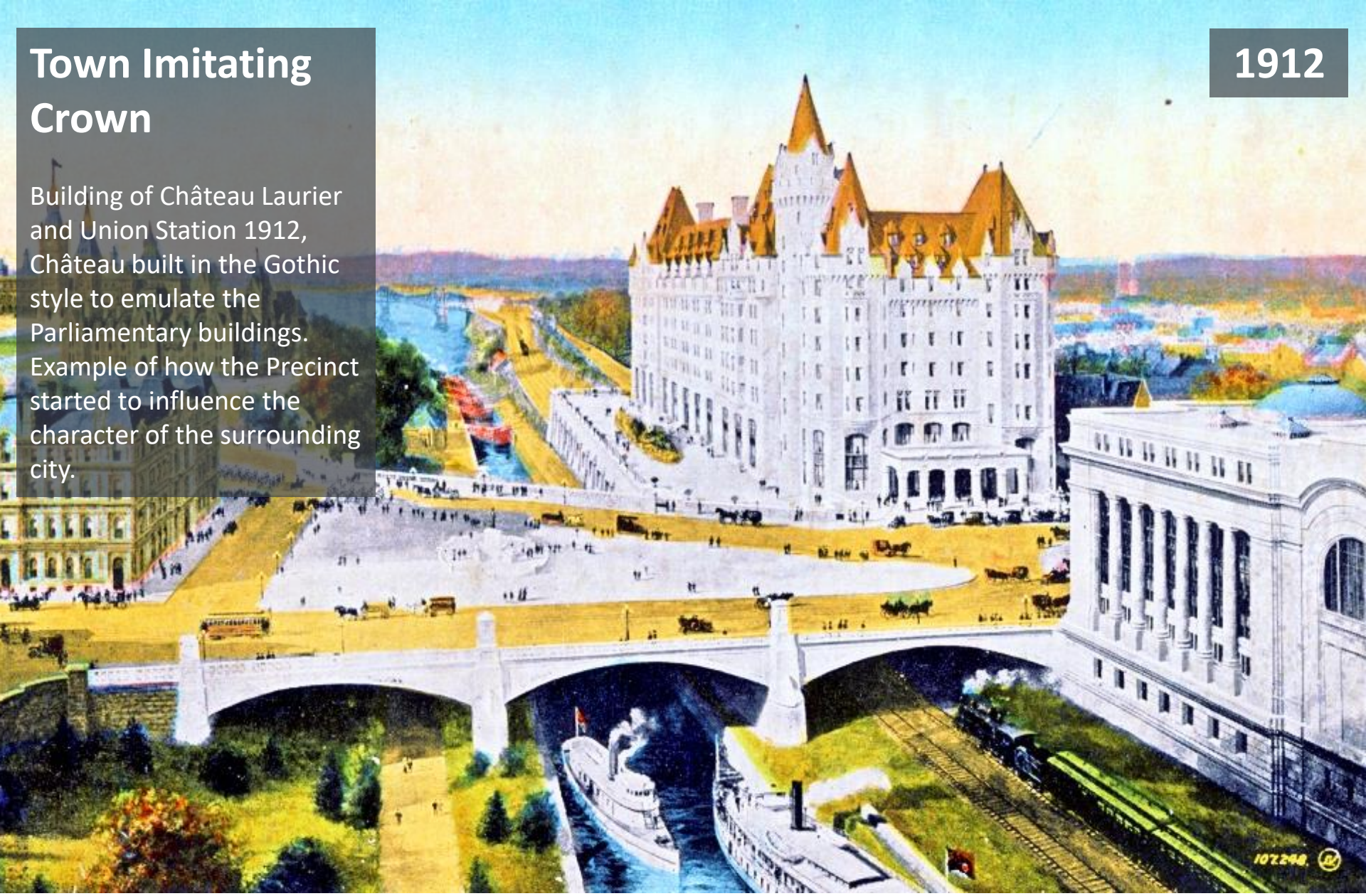




# Town Imitating Crown

1912

Building of Château Laurier and Union Station 1912, Château built in the Gothic style to emulate the Parliamentary buildings. Example of how the Precinct started to influence the character of the surrounding city.



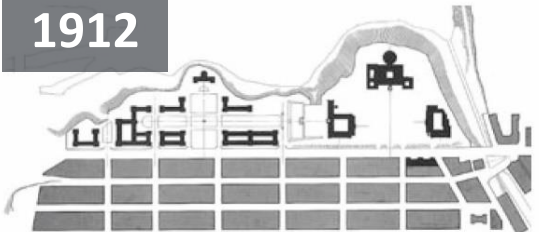


# Fire of 1916

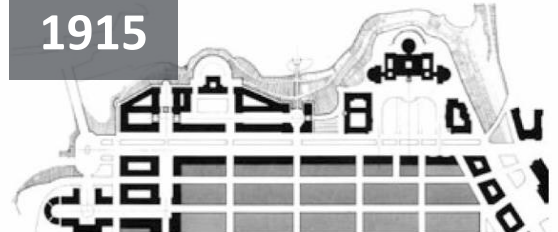


# Evolving Plans in an Urban Context

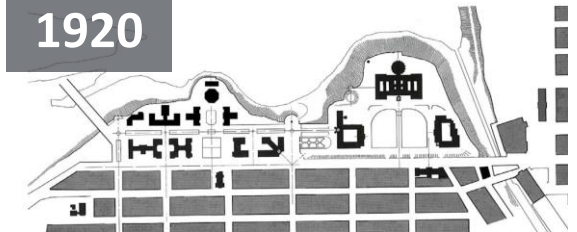
1912



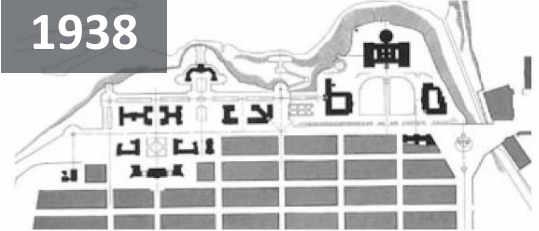
1915



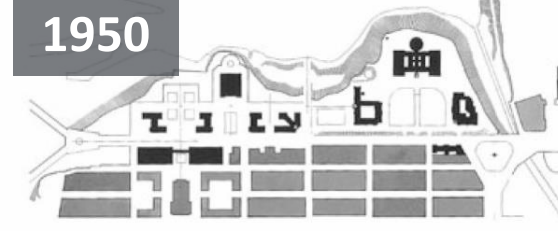
1920



1938



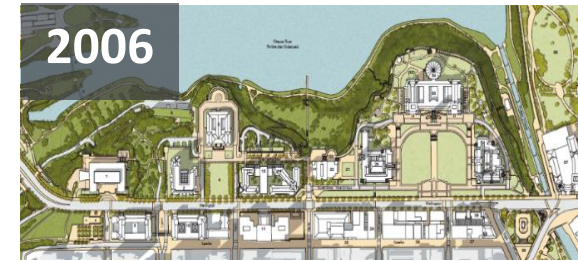
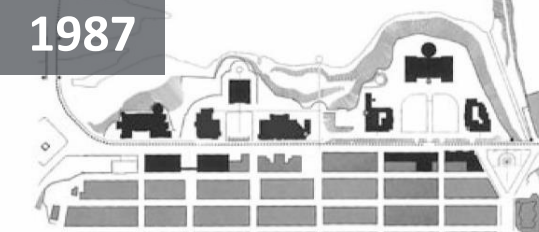
1950



1971



1987



2021





# Key Takeaways

Many themes characterize the Precinct's history, some key takeaways for our team:

- **Indigenous Peoples:** Indigenous Peoples have lived in the area since time immemorial
- **Early Settlement:** Initial development was tied to military and commercial functions associated with Rideau Canal and adjacent waterways
- **Wellington Street + Precinct Boundaries:** Wellington Street has long served as a seam within the Precinct and surrounding city
- **Town and Crown:** Relationship between Town and Crown is closely intertwined, with an ever-evolving understanding of two distinct but related identities
- **Evolving Plans:** The site has a long and rich planning history, that has shaped the Precinct with varying levels of success over time







**WHAT'S  
CHANGED  
SINCE 2006?**





# QUITE A LOT!

---



Public Services and  
Procurement Canada

Services publics et  
Approvisionnement Canada

Canada 

...Happy 150<sup>th</sup> B-Day!



**CANADA 150**





# ...a virtual world has evolved



# ...different ways of using public space



Public Programming: Yoga on the Hill, Ottawa

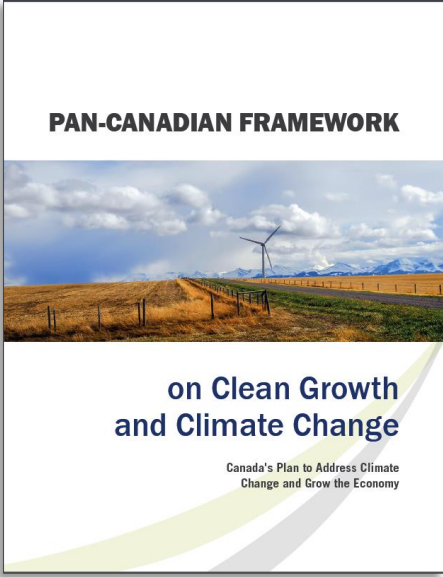
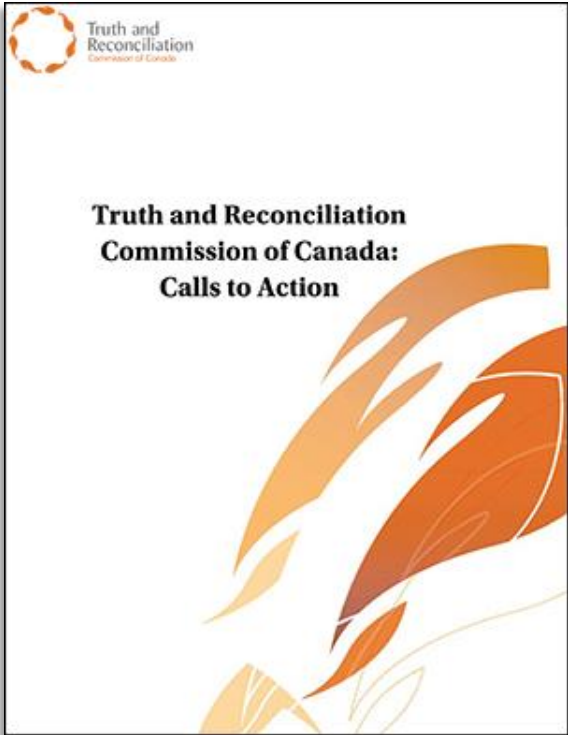




# ...flooding, a regular occurrence?

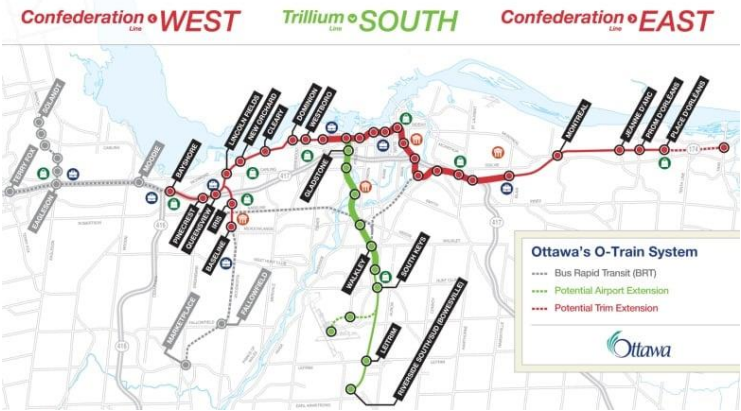


# ...TRC...universal accessibility...well-being...

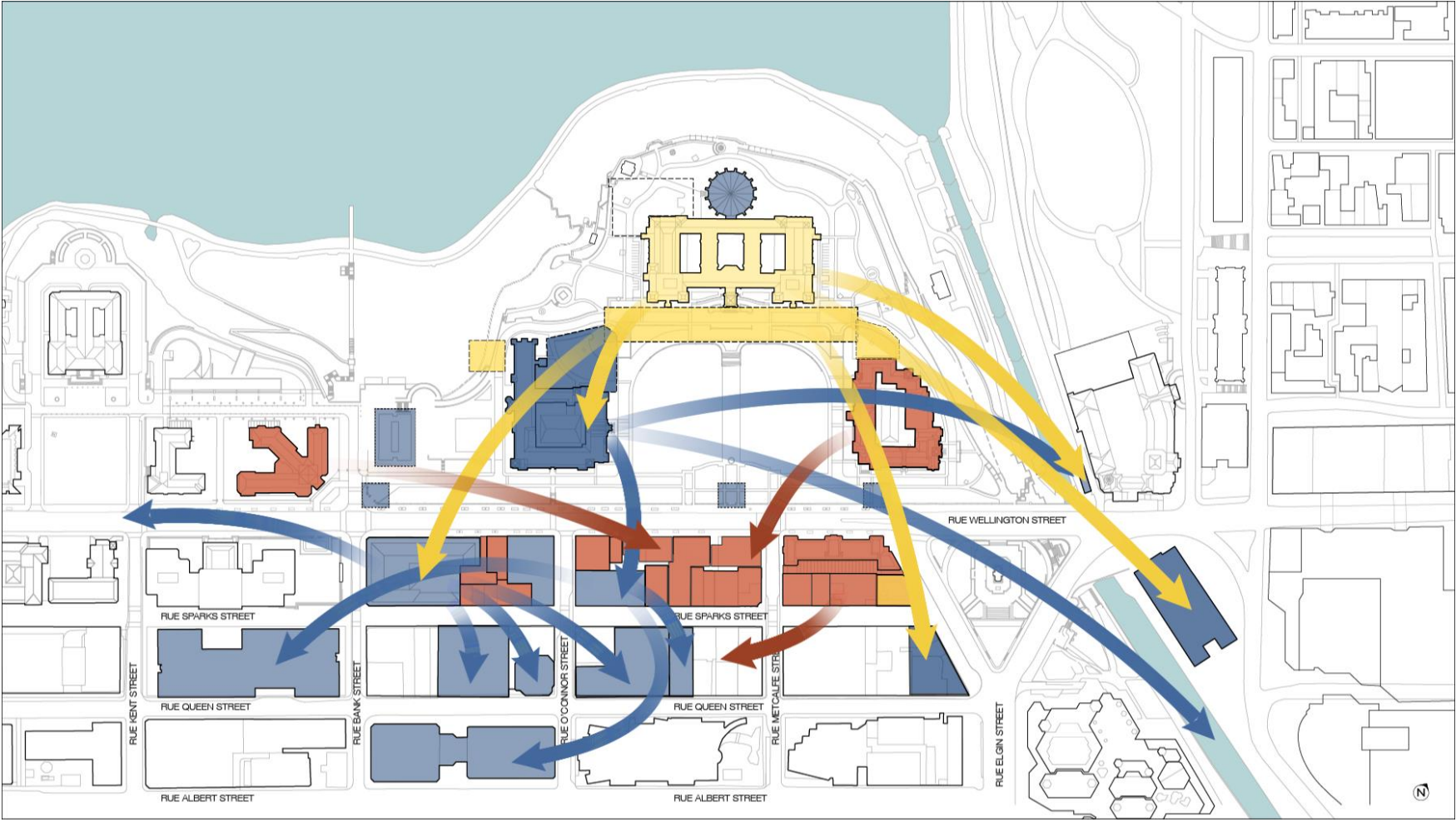




# ...emphasis on active transportation...



# ...implementation of the LTVP...







# SOME KEY CHALLENGES + OPPORTUNITIES

---



Public Services and  
Procurement Canada

Services publics et  
Approvisionnement Canada

Canada 

# Circulation: LRT + Autonomous Vehicles



<https://obj.ca/article/ottawa-council-turnover-delay-lrt-phase-2-contract-schedule-unaaffected-says-planning>



Public Services and Procurement Canada / Services publics et Approvisionnement Canada

Canada



# Urban Design: Wellington Street, Sparks Street



# Urban Design: Precinct Character





# Universal Accessibility







# KEY PLANNING CONSIDERATIONS





**Dignity of  
Parliament**

**Urban Integration**

**Wellbeing of  
People and the  
Environment**

**Town and Crown**

**Identity of the Hill**

**Parliamentary  
Privilege and  
Parliamentary  
Business**





# SITE TOUR











# WORKSHOP INSTRUCTIONS



# Session 2 Instructions

**60**      **Workshop**

**15**      **Report Back**

## **Questions:**

- What design strategies have you seen as the most effective to establish a clear sense of identity and place in a mixed campus and urban context? Have you seen these approaches applied in a heritage context, any lessons learned?
- What opportunities do you think we should explore to improve the interface between the Precinct and the City and contribute to a lively environment in Downtown Ottawa?
- What opportunities do you see for the Plan to demonstrate leadership and innovation in campus and district planning, what key issues or emerging best practices should be considered?





# THANKS!

---



Public Services and  
Procurement Canada

Services publics et  
Approvisionnement Canada

Canada 