

Whistler Through the Ages

Elevation 2.0 – Learning Tour

Sarah Tipler, Accessibility Coordinator

Vanessa Pocock, GIS Supervisor

July 5, 2022

Learning Tour Agenda

1. Presentation on Accessibility in Whistler
2. Utilizing GIS and live demonstration
3. Guided tour

Accessibility in Whistler

Improving accessibility in preparation for the 2010 Winter Olympic and Paralympic Games

- ✓ Wayfinding and mapping of accessible features and routes
- ✓ Accessibility audits on the transit system, Village, parks and municipal facilities
- ✓ Accessibility Committee established
- ✓ Major barriers into the Village were retrofitted with ramping and wayfinding signage

Major Capital Projects

- ✓ Whistler Olympic Plaza



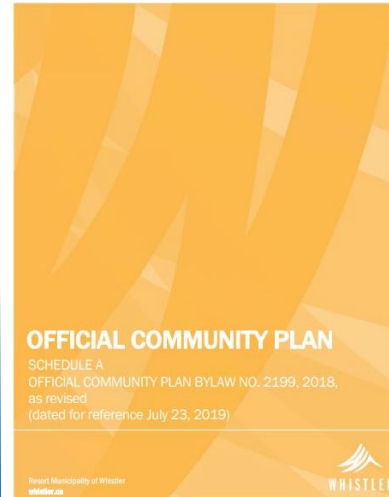
- ✓ Gateway Loop Transit Exchange



- ✓ Universal Washrooms



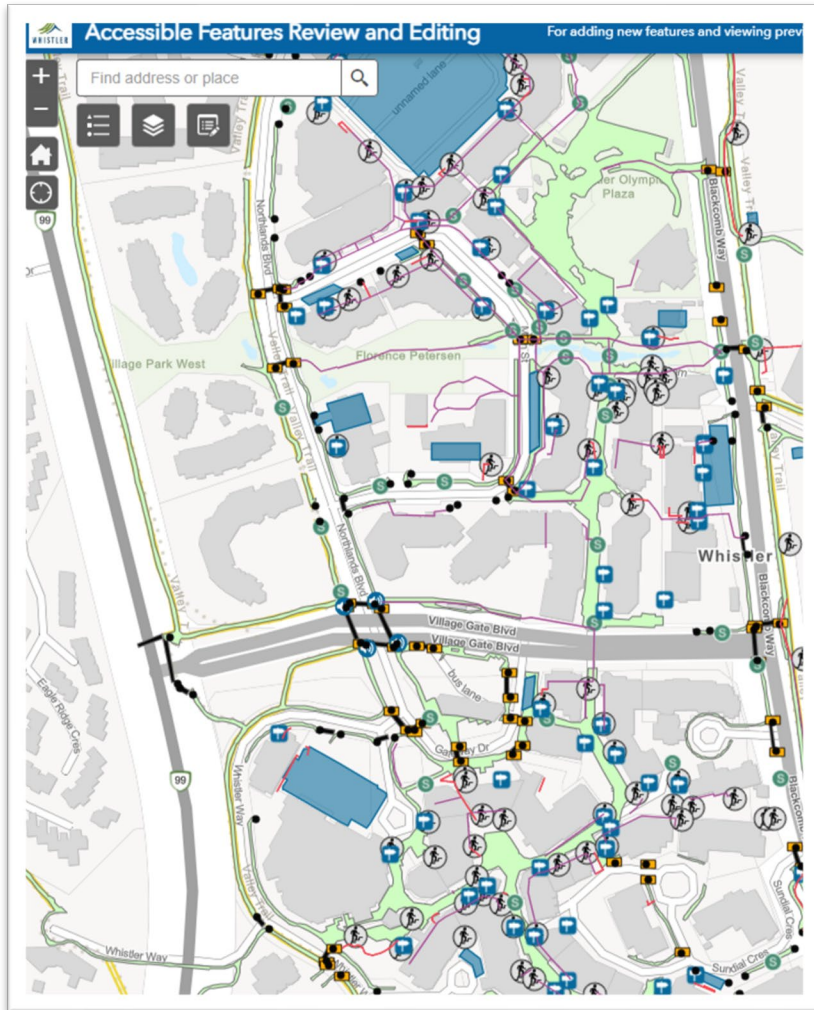
Universal design integrated into OCP



Coming
Soon:
Accessibility
Action Plan

Utilizing GIS:

Map, monitor and maintain accessible infrastructure



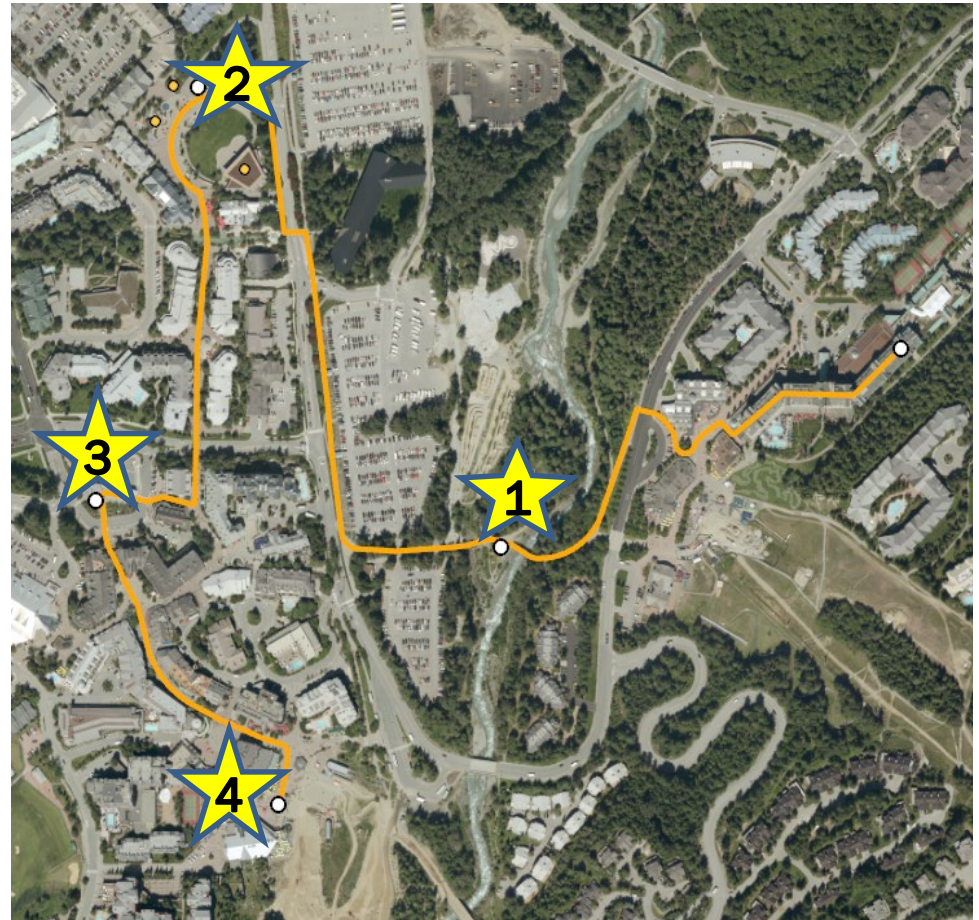
- Efficient tool for asset management
- Allows staff from multiple departments to understand the status of particular features
- Facilitates data use in a variety of ways
 - ✓ Creating customizable maps
 - ✓ Reviewing historical damage
- Links multiple files to a physical location
 - ✓ Photos
 - ✓ Covenants

Live GIS Demonstration

1. Capturing assets
2. Completing surveys
3. Maintenance applications

Walking Tour Agenda

1. Fitzsimmons Bridge (572 m)
 - ✓ Accessible interpretive signage
2. Whistler Olympic Plaza (612 m)
 - ✓ Universal design in the public realm
3. Gateway Transit Loop (603 m)
 - ✓ Universal design in public transportation
4. Skiers Plaza (368 m)
 - ✓ Gondola accessibility



1. Fitzsimmons Bridge: Accessible Interpretive Signage



Signage mounted
at accessible
heights

2. Olympic Plaza: Universal Design in the Public Realm

Pavilion and
viewing areas
provide
access and
choice



2. Olympic Plaza: Universal Design in the Public Realm

Public Washrooms



Accessible
Family
Non-gendered

2. Olympic Plaza: Universal Design in the Public Realm

Children's Play Area



Accessible to
parents and children
of all abilities



3. Gateway Transit Loop: Universal Design in Public Transportation



Designed to
facilitate
accessible public
transportation

4. Skiers Plaza: Gondola Accessibility



Providing access and supporting growth of adaptive sports and recreation

