

AGRICULTURAL PLANNING

Perspectives & Priorities

John Steil, FCIP

Wayne Caldwell, FCIP

Ottawa, July 2019

DOMINION



LANDS.

INTERIM HOMESTEAD RECEIPT.



No. 31238

Agency, _____
_____ 190

I **Certify** that I have received from _____

John Steil
Launceston Wis.

the sum of 25 Dollars, being the office fee for Homestead Entry for 9.00

Quarter Section 12 Township 38 Range 22

West of 6 Meridian, and that the said John Steil

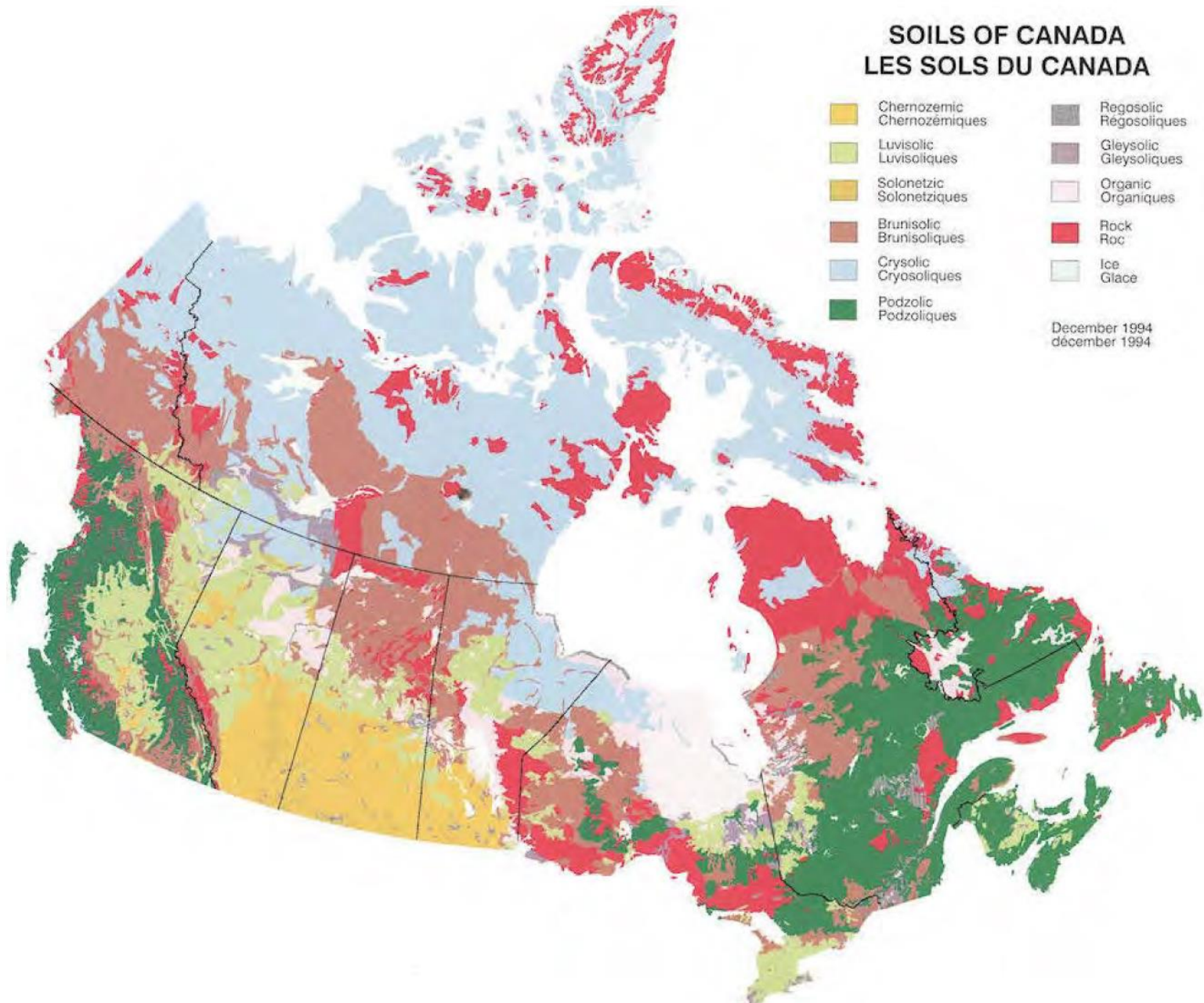
is, in consequence of such entry and payment, vested with the rights conferred in such cases by the provisions of "The Dominion Lands Act," respecting Homestead Rights.

NOTE. All minerals existing on or under the lands herein prescribed, are reserved to His Majesty.

[Signature]
Local Agent.

NOTE.—This Entry is granted under and subject to the provisions of the Dominion Lands Act and its amendments, governing Homestead Entry for Dominion Lands.





A black and white photograph of a man in a straw hat and plaid shirt holding a pitchfork, standing in a vineyard. The text "What is agriculture?" is overlaid in red.

What is agriculture?

Agriculture

the growing raising, managing and/or sale of livestock, crops, horticulture and agriculture related products or services including food, feed, fibre, energy and other complementary value-added activities

the **agricultural system** includes all the components of a healthy farming sector in an agricultural area

Myths About Agriculture

Most Canadian farms are family owned and operated

True or False?

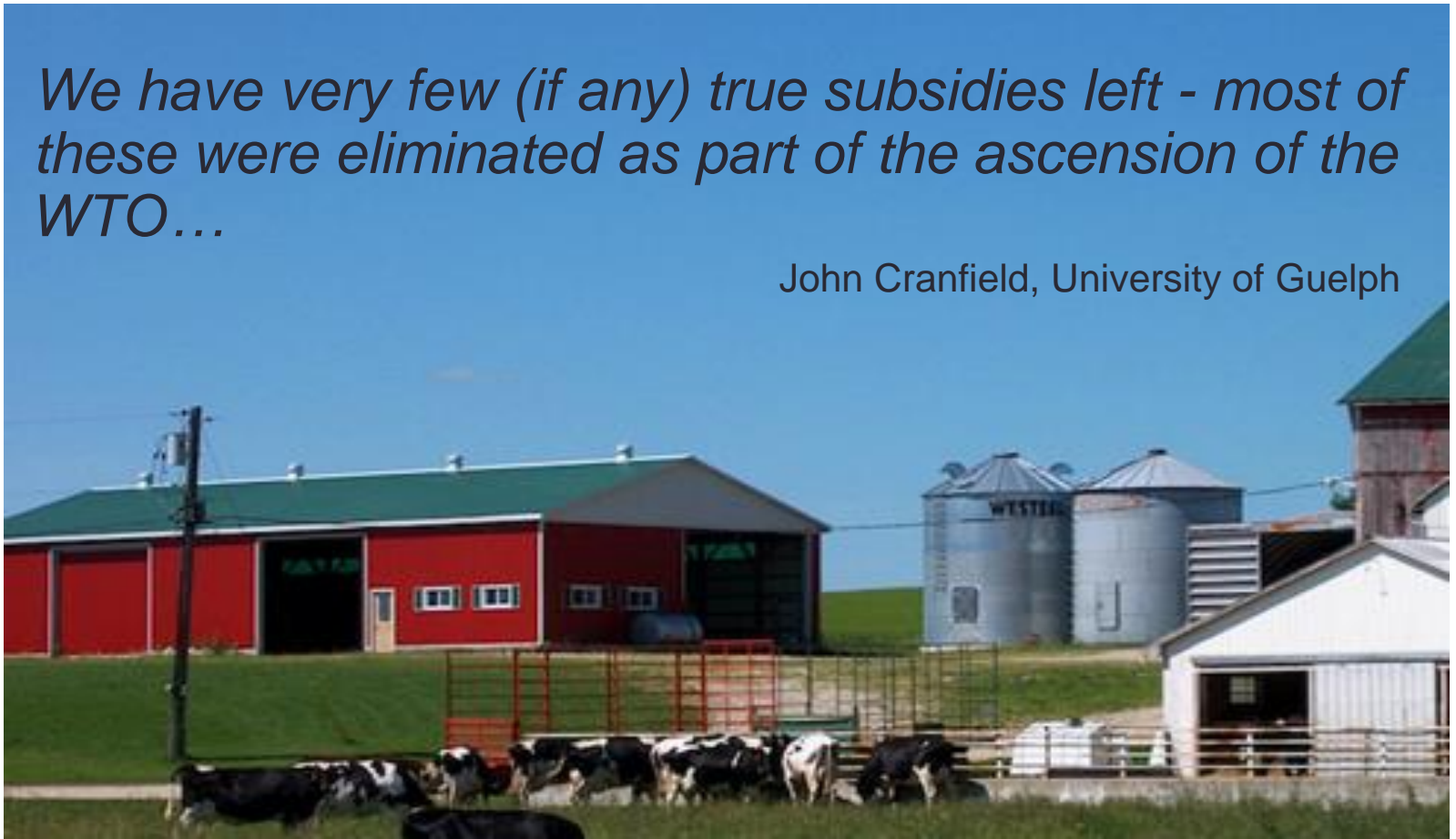


Myths About Agriculture

Agriculture is heavily subsidized. **True or False?**

We have very few (if any) true subsidies left - most of these were eliminated as part of the ascension of the WTO...

John Cranfield, University of Guelph



Myths About Agriculture

Do you have a favourite myth about agriculture?





Brief story



The value of agriculture?





An economic activity



Food & food security

An alternative life style



Environmental goods & services





Community character



Major trends?

▲
ag & food

UNLEASHING THE POTENTIAL OF CANADIAN CROPS



- 1 — The global demand for food is growing, with a specific need for more protein. As a trusted supplier of food and feed, Canada is uniquely positioned to meet this demand.
- 2

It is our time

The supercluster initiative is more than just investing money; it is about doing business differently - about leveraging strengths to drive innovation, overcome barriers and explore new opportunities. By creating more value-added processing opportunities in Canada, we will generate new companies, products, processes, services, and jobs.



Report by Bloomberg @bloomberg

The U.S. corn market is turning upside down in response to Midwest floods. Insights via @CMEGroup



79.3K views



17

24



Volatility in supply

Canada's ag industry will survive this trade war between China and U.S., but not without casualties

There's a learning opportunity we'd be wise to take seriously, *Toban Dyck* writes.

The agricultural pedagogy of a global trade disruption. It's a lofty, detached way of talking about the current conditions that are affecting lives and testing the fiscal thresholds of many Canadian farms.

Amid the dissolution of important agricultural trade networks, there's a learning opportunity that we'd be wise to take seriously.

It's the silver lining on a bad situation.

Farming is a global enterprise. Farmers know this and are so comfortable operating under this assumption that many forget it's something consumers need to be reminded of.

Canola prices remain low and China's doors remain closed. Meanwhile, Canadian soybean

exports to China have slowed to nominal. "In January and February Canadian soybean exports to China totalled just 2,398 tonnes, or an average of 1,199 tonnes — a drop of 99.9 per cent," reported Allan Dawson in the Manitoba Cooperator.

The U.S.-China trade war drove down Canadian soy prices, which are based off of figures set in Chicago. China, while still accepting soybeans from Canada, is finding opportunity in Brazil — a demand that is diminishing as African swine fever has ravaged its hog population.

The loss of China as a viable market in the short term has meant the trade relationships must be started and/or strengthened. This is something the U.S. is doing, too.

Wanting a seat at the table may not be enough. We may have to be focused, assertive and smart, representing Canada's robust agriculture industry with a razor sharp understanding of what exactly it is and an appreciation for what it means to the nation.

The industry is set up to deal with this complexity. Provincial grower groups represent farmers and work with governments on funding models, business risk-management programs, research, general policy and on making sure farms are able to remain as competitive as possible.

National groups do the same. They monitor government policy. They work with the federal government on many files, one of which is global trade.

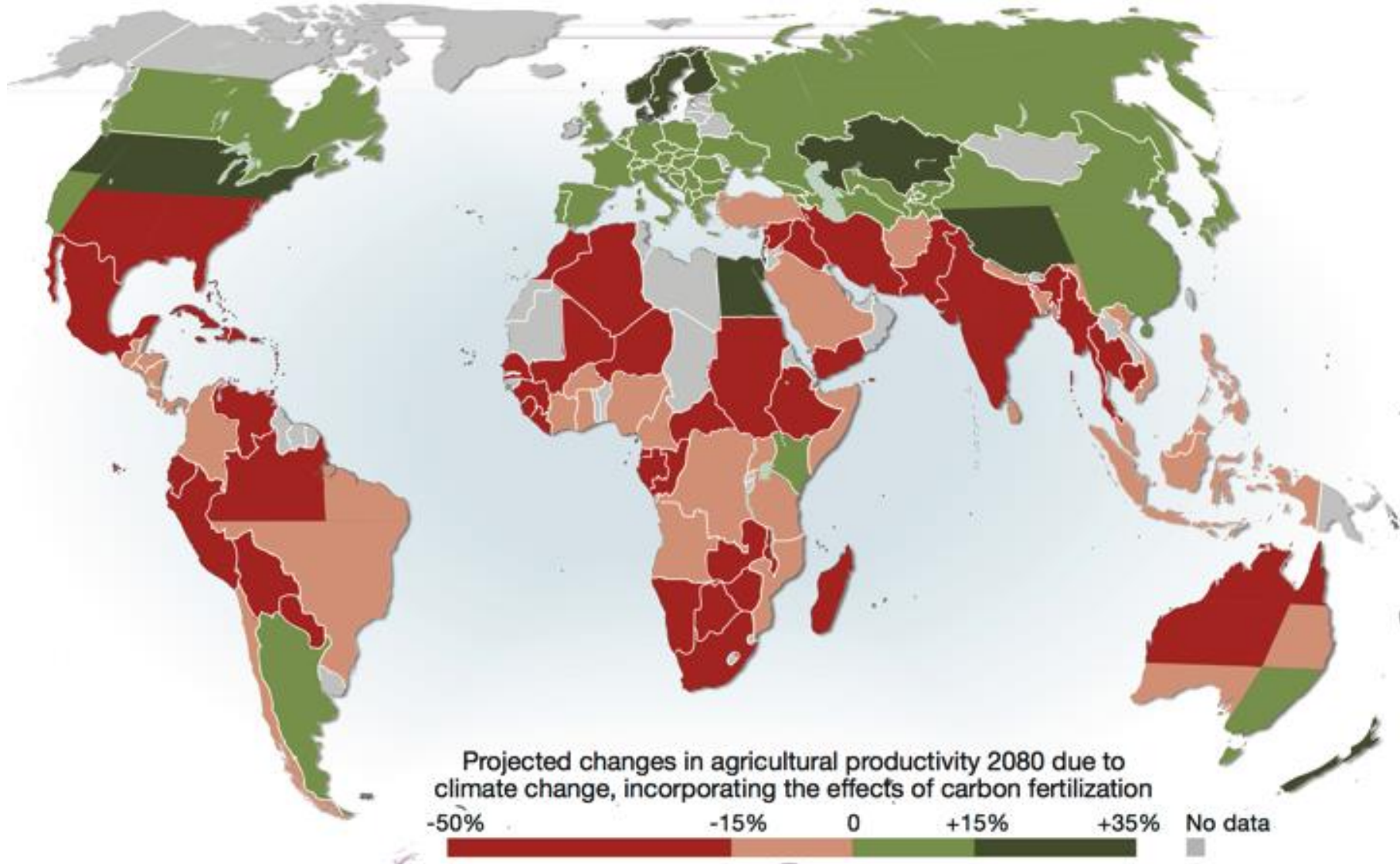
Understanding modern agriculture and the industries that support it with an open mind is not the same as sleeping with the enemy, selling out, or being in the back pocket of Big Ag. Rather, understanding modern agriculture and how its synapses fire all over the world is the key to resolving our current crisis.

How Canada comes out of this depends on how well our lawmakers are able to comprehend the way things are, how they got there and where they should/could be.

We need a government that understands and respects Canada's role in the global agricultural network. It's a complex and shifting position, one that is intelligently in a highly competitive and wildly unpredictable game

Volatility in markets

Productivity change to 2080



Irrigation tougher on Delta farms as water gets saltier

JOANNE LEE-YOUNG

Delta, home to one of the most important agricultural areas in the Lower Mainland, is struggling with how to water all its vast farms as climate change and real estate development impact its current sources.

Delta strawberry farmers have been especially hard hit in recent years, for example.

With the size of snowpacks getting smaller, less fresh water is running into the streams that feed the Fraser River, which eventually mixes with the Pacific Ocean's sea water. This has coincided with drier conditions and hotter temperatures.

Just as farmers need to irrigate more frequently near the end of the season, with less fresh water in the Fraser the water they have

been drawing from the surface of the river gets too salty in July.

The time frame for drawing quality water is changing, and this means the growing season for strawberries has been getting shorter, said Leisa Yee of the Delta Farmers Institute, which is looking at what options may be available.

In Delta, total gross farm receipts contribute \$170 million to the economy, according to the municipality's latest figures, which are from 2010.

In 2005, Delta accounted for 3.3 per cent of farms and 6.4 per cent of the total agricultural land base in the Lower Mainland, but earned 11.5 per cent of the gross farm revenues. It says it has 50 per cent of the province's potato acreage, 50 per cent of its greenhouse vegetable land, and 25 per cent of its field vegetable acreage.

Firm sues ex-employee, competitor that hired him

that their former head of sales must comply with proprietary property and confidentiality obligations written into his contract.

In the statement, Maximizer claims that while Propp was an



Delta's agricultural area accounts for a significant portion of Lower Mainland farming. *FILES*

"We are working on monitoring (the) salinity (of water) because not all crops are tolerant when salinity increases," said Yee. "It's pushed us to think where and when we should draw (in order) to have quality water."

Possibilities for the future include adding a new station for pumping water from the Fraser River that is closer to the Alex Fraser Bridge that could supply east Delta, and finding ways to pipe water to Westham Island in west Delta. Monitoring stations that would

track river flow and salinity levels and send real-time information to farmers so they can compare data and make plans are part of another long-term goal.

Aside from climate change, there is also pressure on water supply for farm land due to development that is encroaching and impacting waterways.

"We need to know: are they clear? Is there drainage? There is a lot of urban pressure," said Yee.

The water supply for more than half of Delta's 6,000 hectares of

agricultural land comes from a city-managed system of ditches.

Another source is Metro Vancouver's drinking water supply.

Greenhouse operations in particular need water for irrigation, washing and processing that is of a higher quality than what is available via the surface water flowing in ditches. That source is vulnerable to potential restrictions, said Yee.

"There is a big cost and a lot of risk for farmers."

jlee-young@postmedia.com

Charges laid, weapons seized in 'suspicious occurrence' in Surrey

SURREY Two men are in custody

Two men from the Honda were



Cost management competitiveness

THE GREAT (GRADUAL) LAND GRAB

**BIG
AGRIBUSINESS**

**SMALL
FAMILY
FARMS**

caglecartoons.com



Changing rural character



Specialization



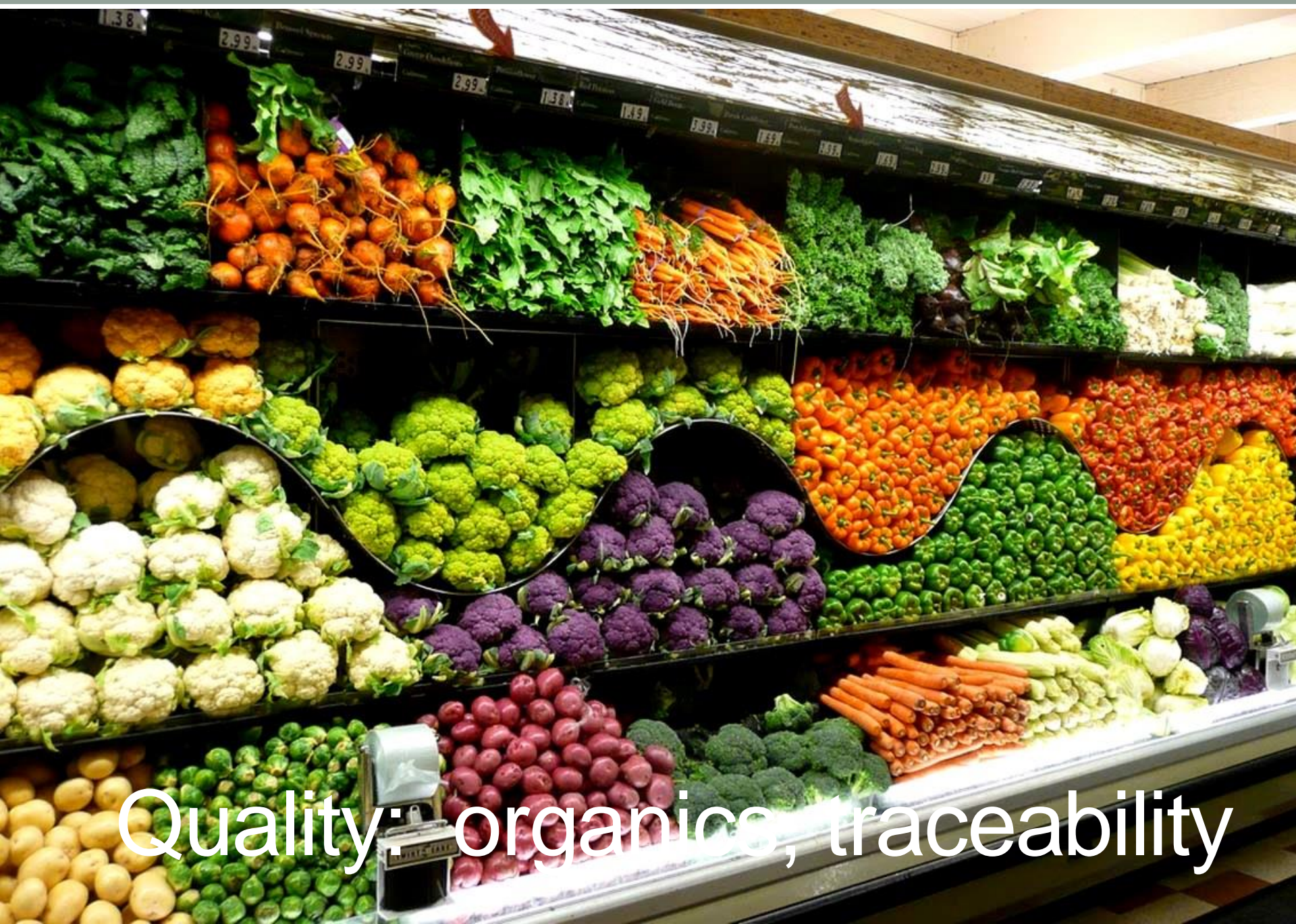
Innovation



Driven by economics but enabled by technology



Agri-tourism



Quality: organics, traceability

4.

Grow your own





[Home](#) > [People and programs](#) > [Food](#) > [Growing food](#) > [Community gardens](#) > [Urban agriculture initiatives](#)

People and programs

- ▷ [Building community](#)
- ▷ [Resilient Vancouver](#)
- ▷ [Grants and awards](#)
- ◀ [Food](#)
 - ▷ [Vancouver Food Strategy](#)
 - ◀ [Growing food](#)
 - [Personal use gardens](#)
 - ◀ [Community gardens](#)
 - [Community garden or orchard](#)
 - [Urban agriculture initiatives](#)
 - [Urban farming and growing food to sell](#)
 - [Backyard chickens](#)
 - [Beekeeping](#)
 - [Urban agriculture guidelines](#)
 - [Urban Agriculture Policy for parks](#)
 - ▷ [Buying and sharing local food](#)

[Print](#) 



Expression of interest for urban agriculture initiatives

Urban agriculture creates vibrant gathering spaces, enhances biodiversity, supports local food resiliency, and promotes social inclusion.

To better support urban agriculture, we're inviting community groups and individuals to help identify potential new urban agriculture initiatives that they would like to establish on City of Vancouver or Park Board land in 2020 and continue to steward over

ADVERTISEMENT

British Columbia

Urban farmers transform Vancouver lawns into vegetable gardens



City Beet Farm uses turf space as growing plots to provide fresh produce for the community

CBC News - Posted: May 26, 2019 1:00 PM PT | Last Updated: May 26



Urban farmer Elana Evans says they have installed vegetable gardens on 15 properties this summer. (@citybeetfarm/Instagram)

Agriculture, Policy & Competition for Land



Agricultural Land



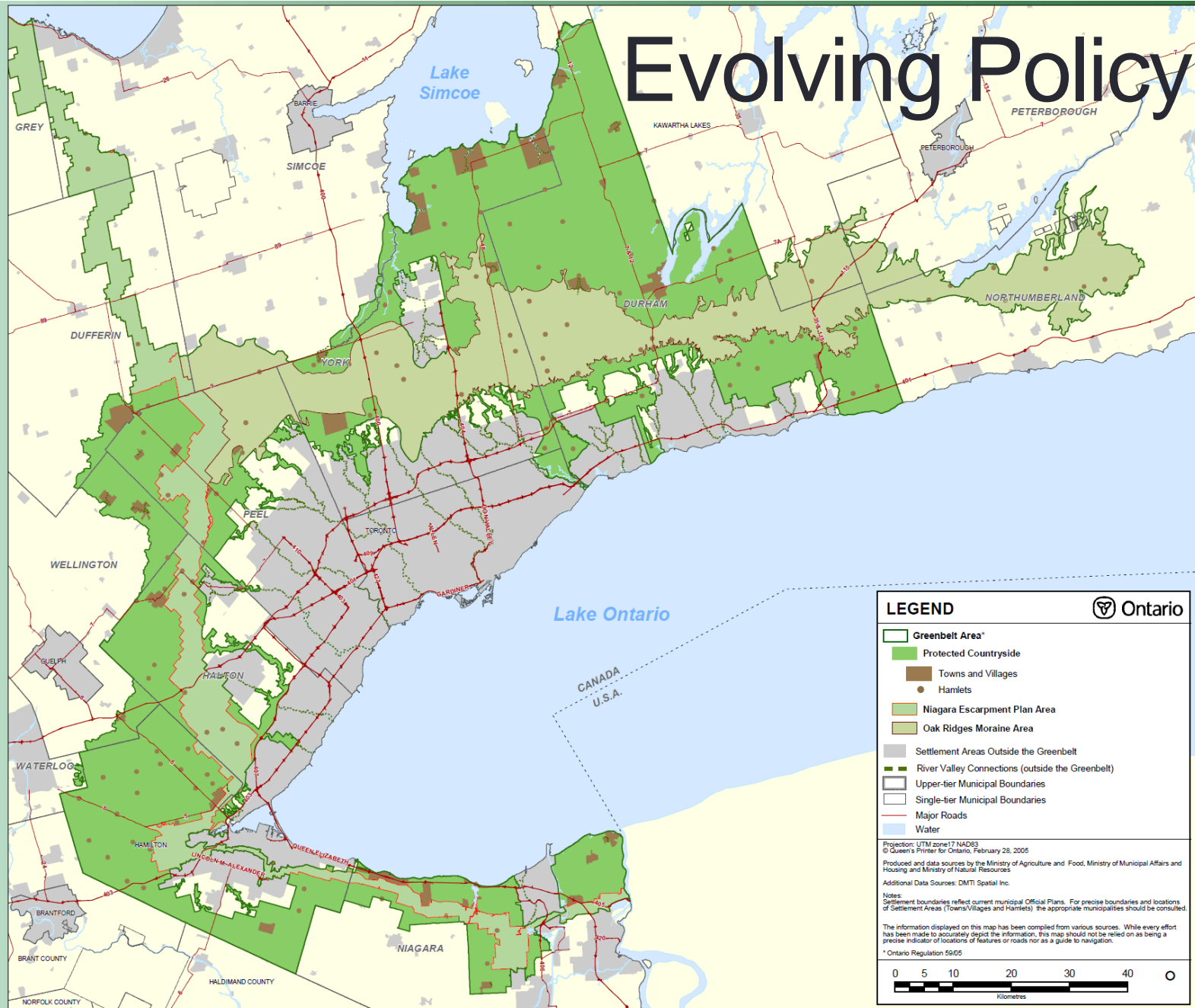
Land Fragmentation



Changing views in the countryside



Evolving Policy



LEGEND

- Greenbelt Area*
- Protected Countryside
- Towns and Villages
- Hamlets
- Niagara Escarpment Plan Area
- Oak Ridges Moraine Area
- Settlement Areas Outside the Greenbelt
- River Valley Connections (outside the Greenbelt)
- Upper-tier Municipal Boundaries
- Single-tier Municipal Boundaries
- Major Roads
- Water

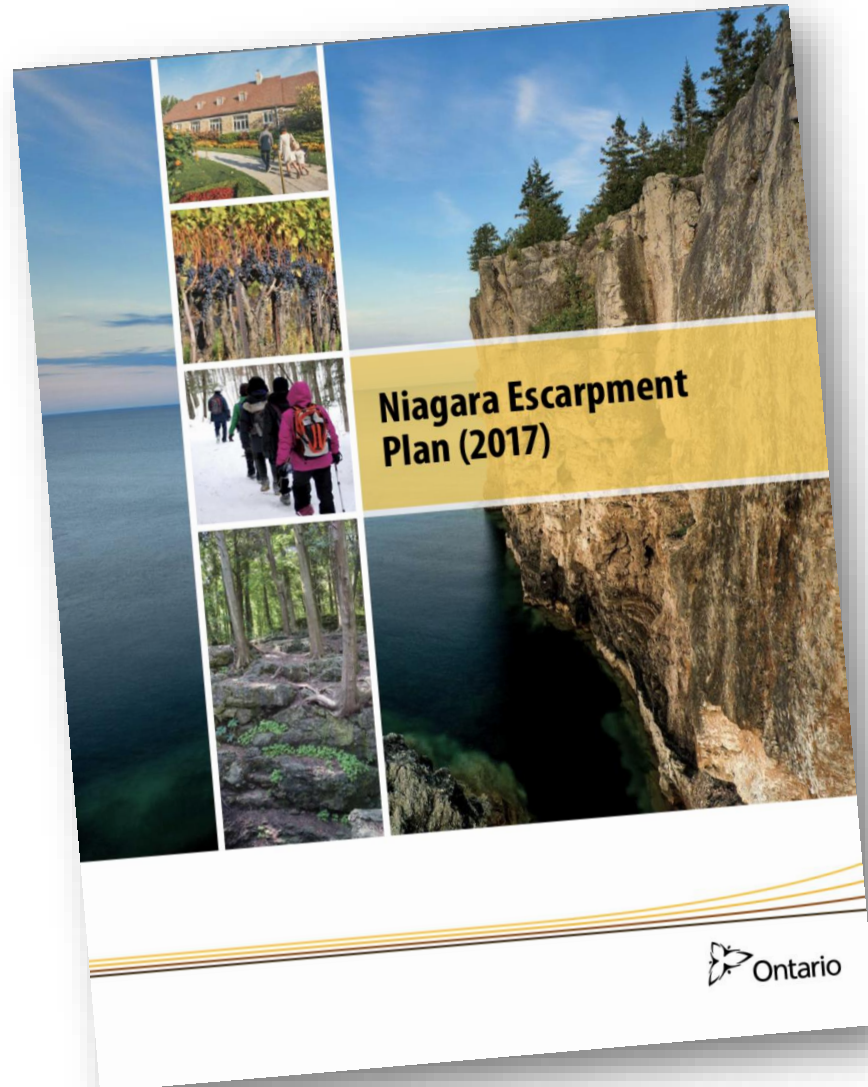
Projection: UTM zone 17 NAD83
 © Queen's Printer for Ontario, February 28, 2005
 Produced and data sources by the Ministry of Agriculture and Food, Ministry of Municipal Affairs and Housing and Ministry of Natural Resources
 Additional Data Sources: DMTI Spatial Inc.

Notes:
 Settlement boundaries reflect current municipal Official Plans. For precise boundaries and locations of Settlement Areas (Towns/Villages and Hamlets) the appropriate municipalities should be consulted.
 The information displayed on this map has been compiled from various sources. While every effort has been made to accurately depict the information, this map should not be relied on as being a precise indicator of locations of features or roads nor as a guide to navigation.
 * Ontario Regulation 59/05

0 5 10 20 30 40
 Kilometres



Changing views over time...





Conservation

Competition for land





Protect my land till I want to retire



Planning For Agriculture: Case Studies and Stories





**ADVANCED AGRICULTURAL
LEADERSHIP PROGRAM**



Lancaster County, PA (OFT)

Talk to a Farmer



Planners
as myth
busters

NOTICE:
THIS
PROPERTY
IS A FARM

FARMS HAVE ANIMALS.
ANIMALS MAKE:
FUNNY SOUNDS
SMELL BAD. AND
HAVE SEX OUTDOORS.

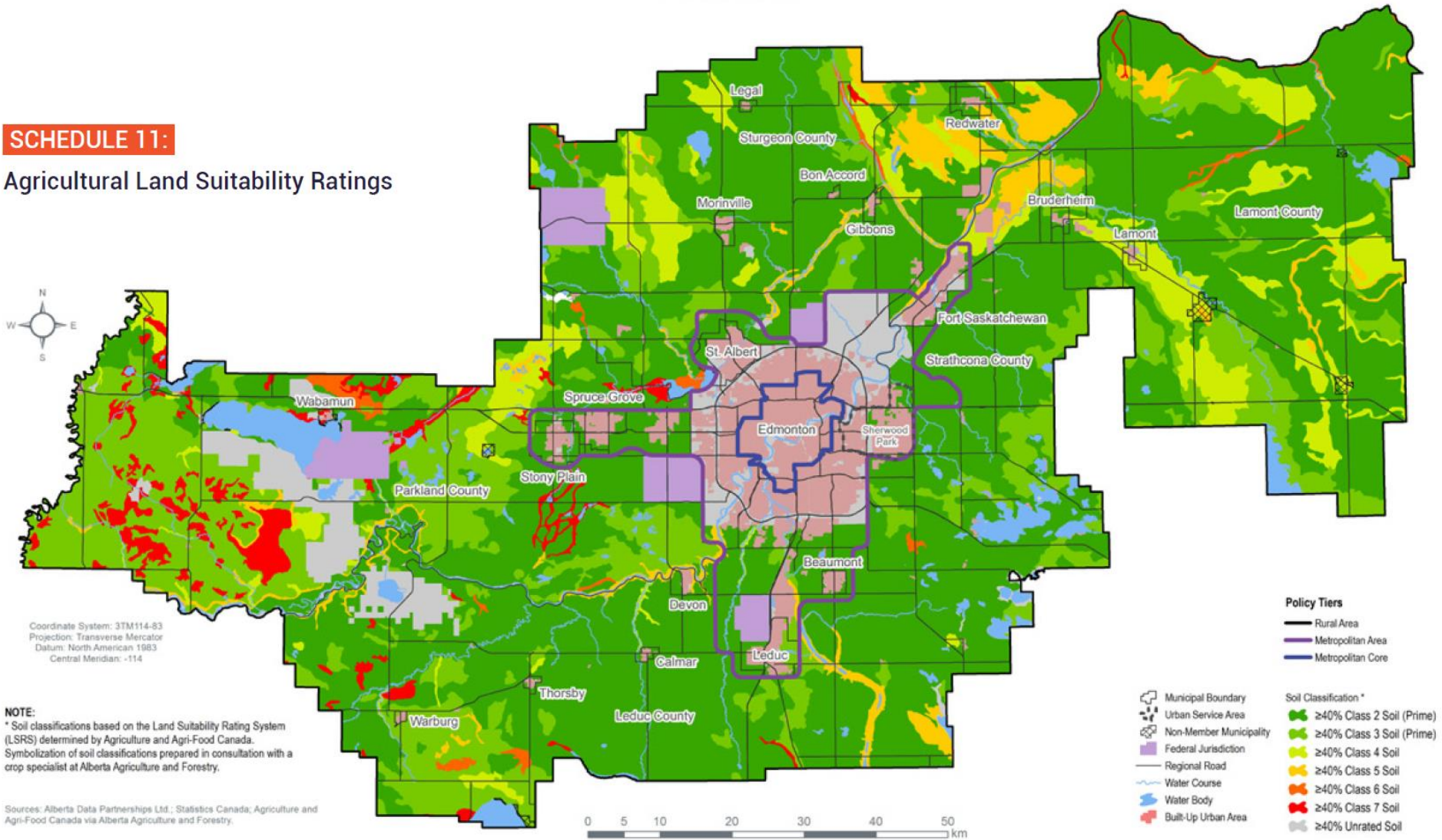
UNLESS
YOU CAN TOLERATE.
NOISE,
ODORS, AND
OUTDOOR SEX.

DON'T BUY PROPERTY
NEXT TO A FARM!

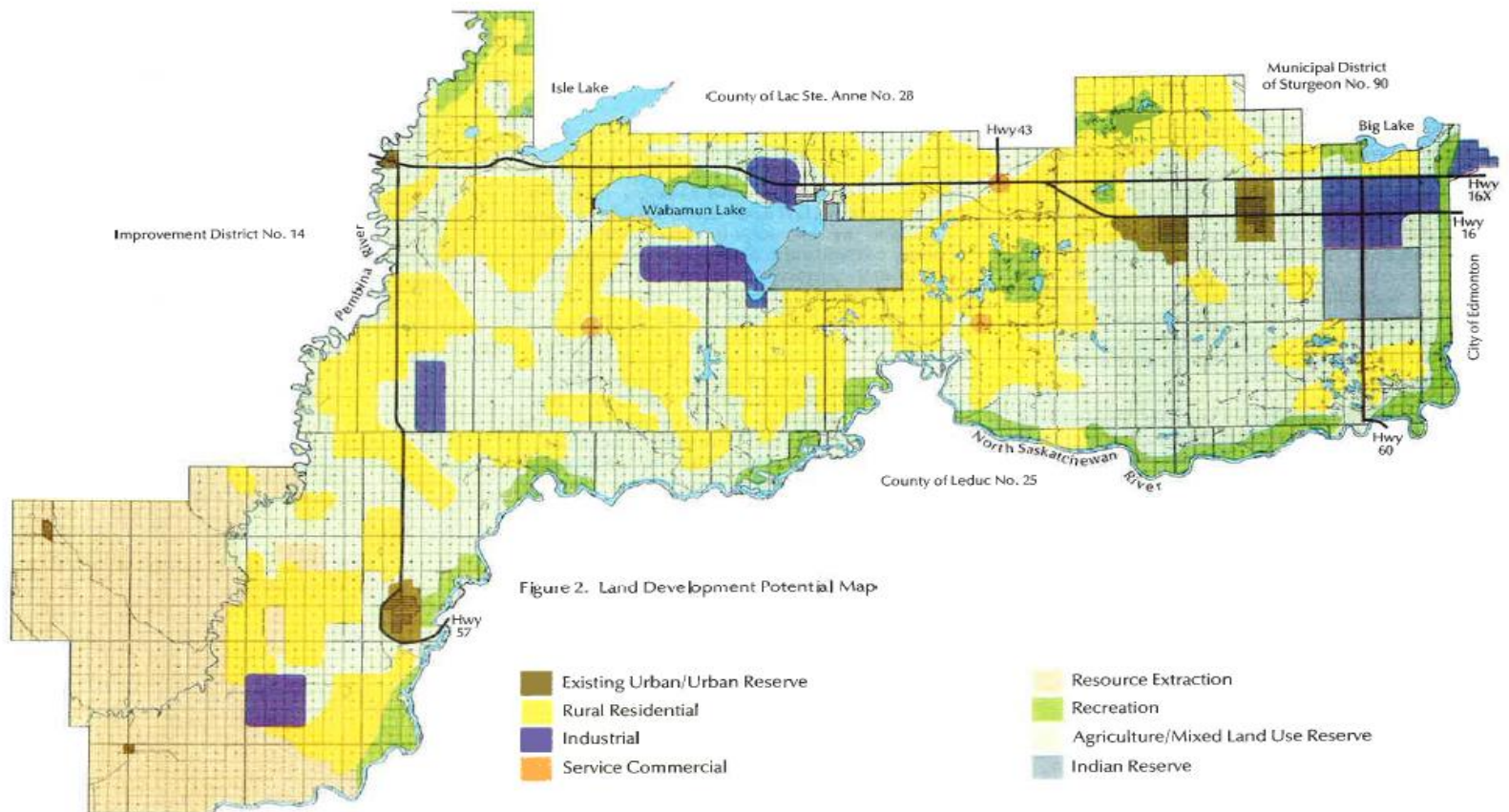
Agriculture in the Edmonton region

SCHEDULE 11:

Agricultural Land Suitability Ratings



Parkland County 1978 GMP



Provincial land use policies



The Future of Agriculture

Strathcona County

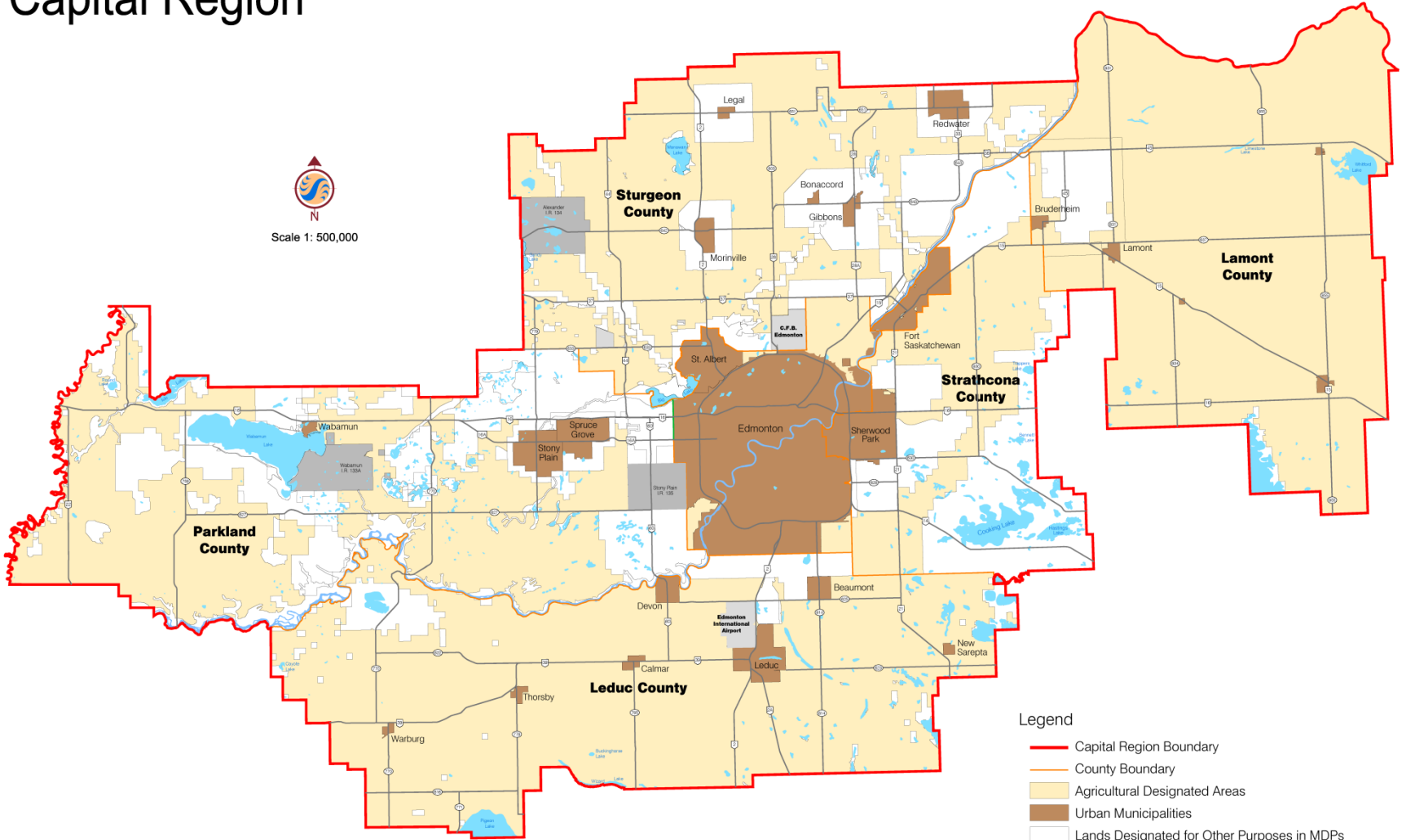


2003

Capital Region



Scale 1: 500,000



- Legend**
- Capital Region Boundary
 - County Boundary
 - Agricultural Designated Areas
 - Urban Municipalities
 - Lands Designated for Other Purposes in MDPs

Map 1 - Agricultural Lands

Mandatory statistics slide

Selected Indicators	2001	2011	% Change
Total Area of Farms (Acres)			
Parkland	475,926	401,863	-16%
Sturgeon	499,567	481,583	-4%
Lamont	524,636	595,608	14%
Strathcona	256,270	220,184	-14%
Leduc	564,298	589,978	5%
Number of Farms			
Parkland	1,144	782	-32%
Sturgeon	1,055	823	-22%
Lamont	910	753	-17%
Strathcona	896	658	-27%
Leduc	1,464	1,255	-14%



Toma & Bouma
MANAGEMENT CONSULTANTS



Stantec



Strathcona County
Agriculture Master Plan
A Time to Choose



Conversion as a last resort

Legend

Transit Terminal/Transit Transfer Facility

Interchanges

Flyover

Gateways

Community Node Policy Area

Primary Community Node

Secondary Community Node

Business Park Policy Area

Environmental Features Policy Area

Major Open Space Corridor/
Eco-Trail

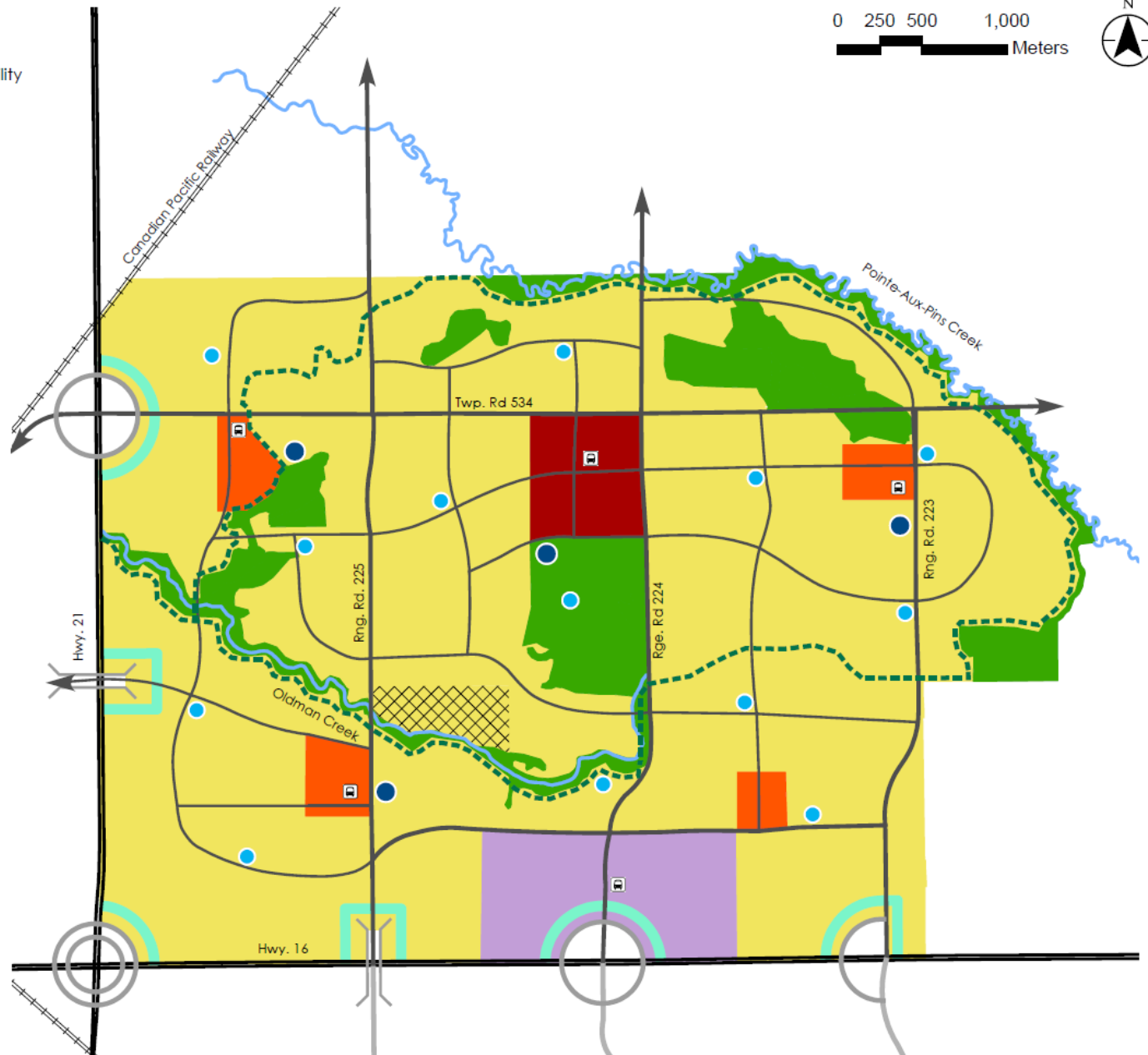
Neighbourhood Policy Area

Existing Country Residential

Village Centre Policy Area

Town Centre Policy Area

0 250 500 1,000
Meters



STRATHCONA
COUNTY

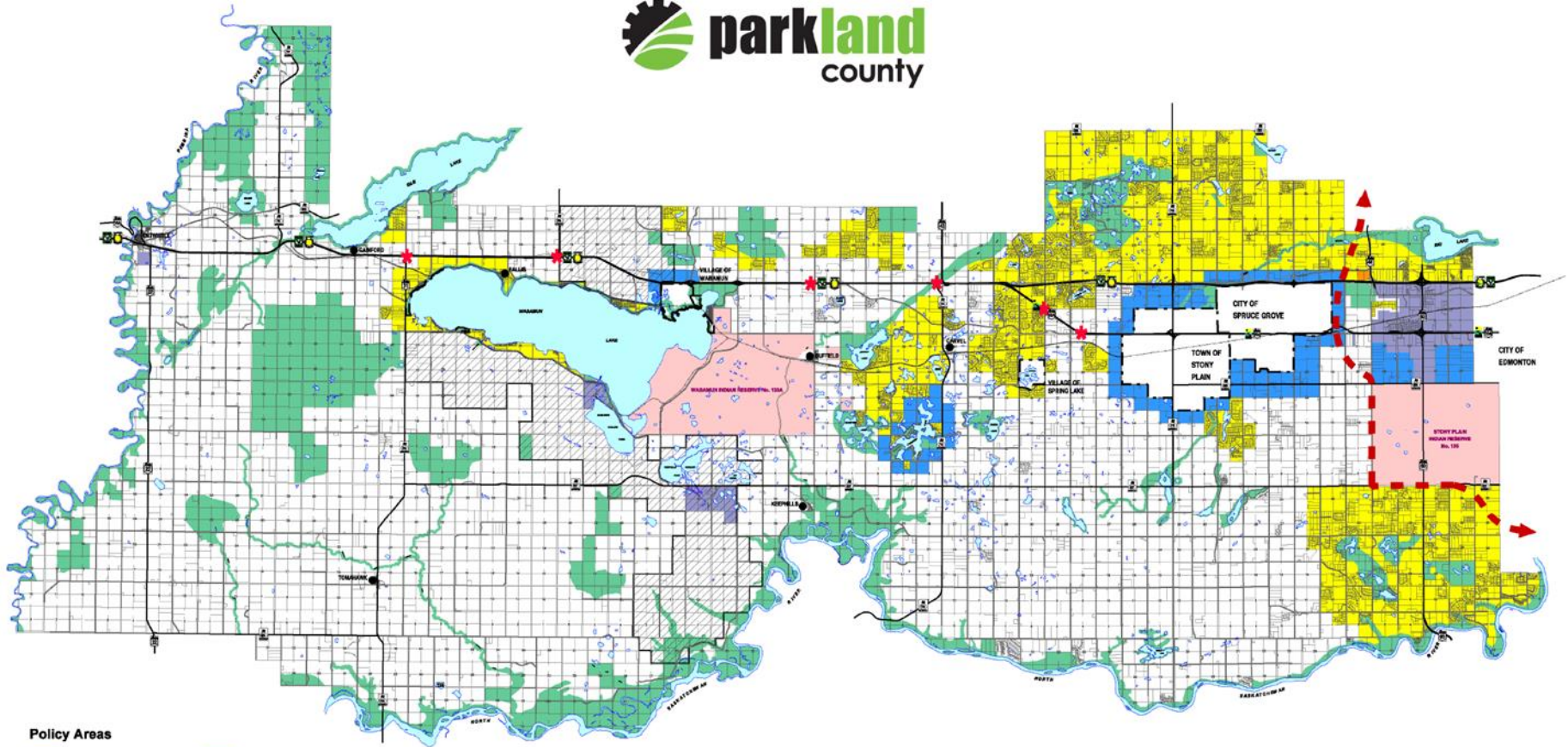
Note: This map is conceptual in nature.
The exact location and alignment of
land uses, facilities, roadways and
services will be determined by the future
development ASPs subject to Strathcona
County's approval.



Future of Agriculture Study

Parkland County



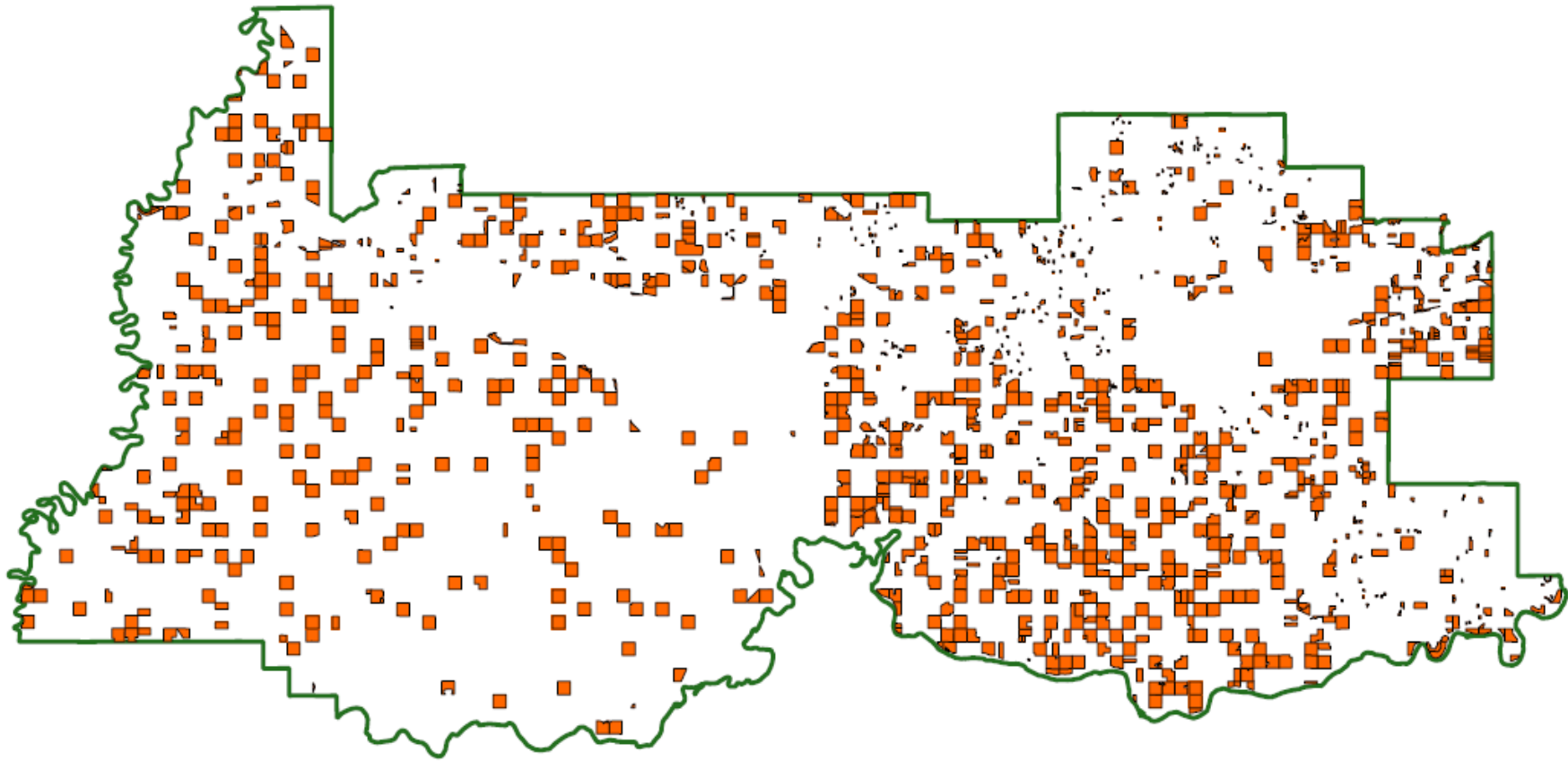


Policy Areas

- Country Residential Core
- Fringe
- Industrial / Commercial
- Environmentally Significant Area
- City/Town/Village Boundary
- Hamlet
- Highway Commercial
- Agriculture
- Major Resource Extraction
- First Nations Reserve
- Highway Commercial Cluster
- Proposed Outer Ring Road

MDP MAP 2
LAND USE CONCEPT MAP

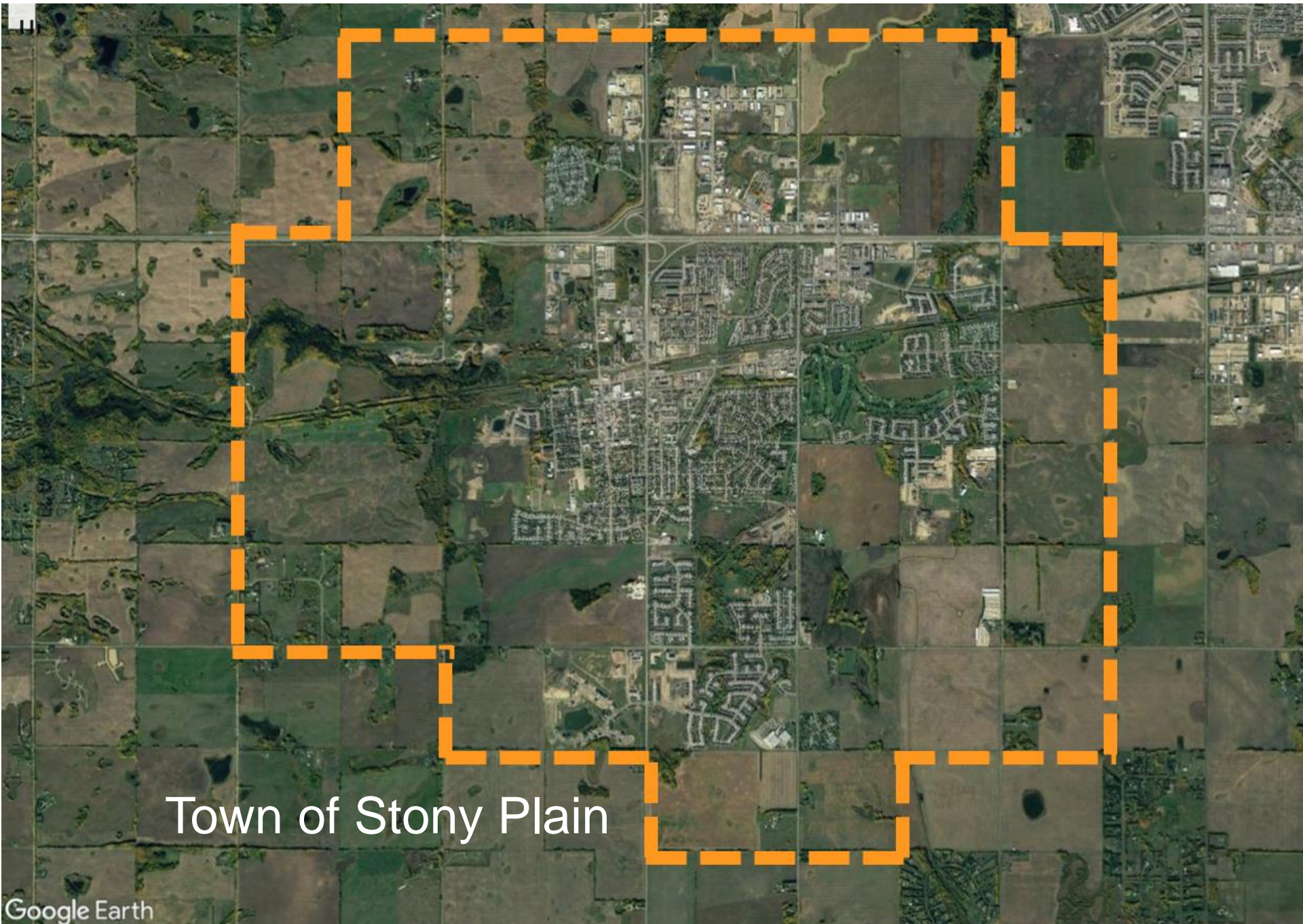
Fragmentation Forecast 2015-2030



- ≥ 5 projected fragments
- < 5 projected fragments



Based on observed trends occurring from 2012-2015



Town of Stony Plain

POLICY AREA 6:



Agriculture



GUIDING PRINCIPLE

Ensure the wise management of prime agricultural resources. In the context of metropolitan growth, we will ensure the wise management of prime agricultural resources to continue a thriving agricultural sector.

OBJECTIVES

- 6.1 Identify and conserve an adequate supply of prime agricultural lands to provide a secure local food source for future generations
- 6.2 Minimize the fragmentation and conversion of prime agricultural lands for non-agricultural uses
- 6.3 Promote diversification and value-added agriculture production and plan infrastructure to support the agricultural sector and regional food system

Prime agricultural lands shall be assessed to identify and conserve a supply of prime agricultural lands. The GRB will pursue this through the following measures:

- a. *prepare a Regional Agriculture Master Plan (RAMP) to conserve and maintain a secure supply of prime agricultural lands with the aim to: support the regional food system, diversify the agri-food production base, contribute to the value-added growth of the agri-economy, and guide agriculture supportive infrastructure investment;*

RAMP Reference Map 4: Agricultural Constraints
 Draft - August 30, 2018

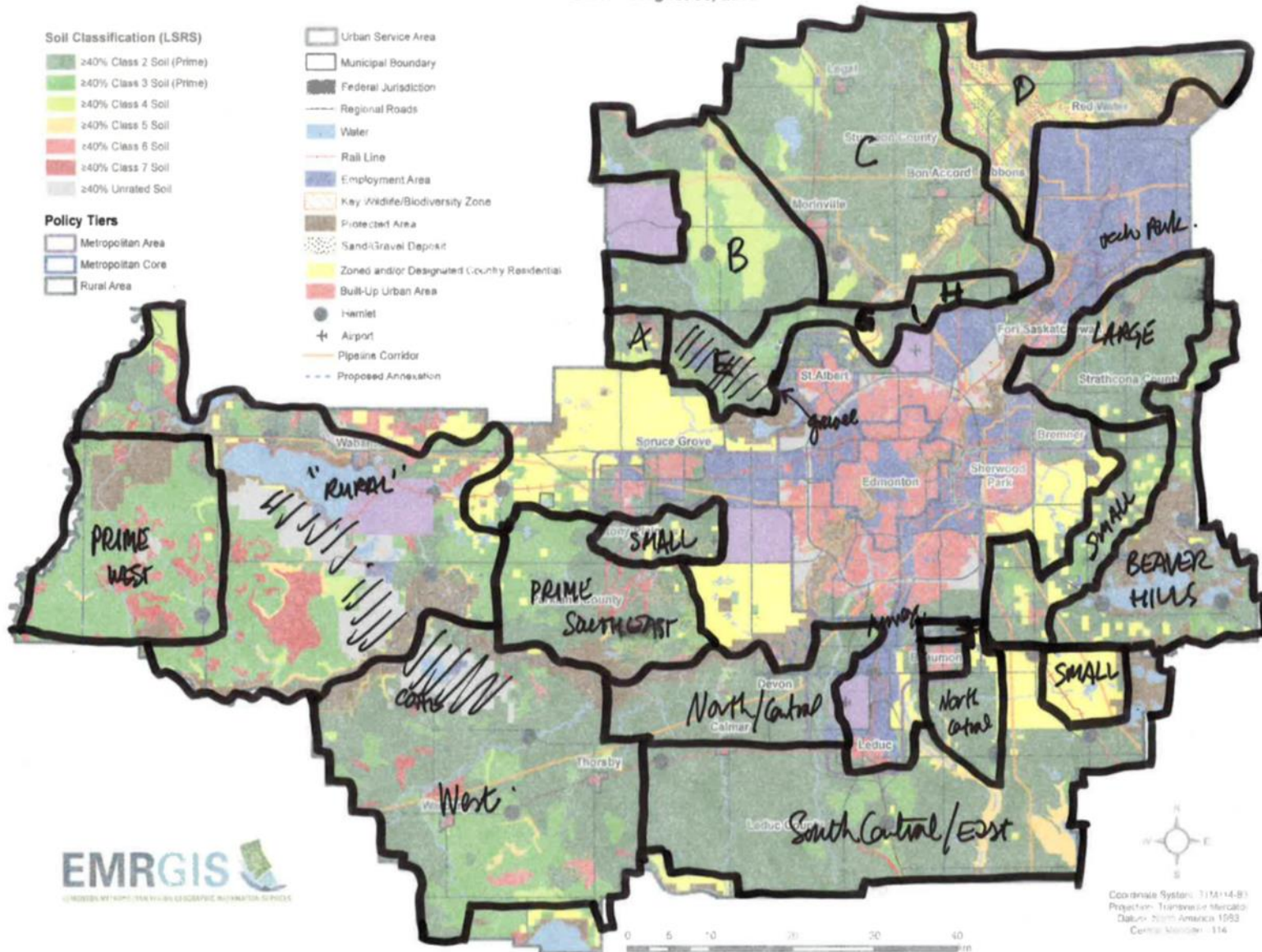
Soil Classification (LSRS)

- ≥40% Class 2 Soil (Prime)
- ≥40% Class 3 Soil (Prime)
- ≥40% Class 4 Soil
- ≥40% Class 5 Soil
- ≥40% Class 6 Soil
- ≥40% Class 7 Soil
- ≥40% Unrated Soil

Policy Tiers

- Metropolitan Area
- Metropolitan Core
- Rural Area

- Urban Service Area
- Municipal Boundary
- Federal Jurisdiction
- Regional Roads
- Water
- Rail Line
- Employment Area
- Key Wildlife/Biodiversity Zone
- Protected Area
- Sand/Gravel Deposit
- Zoned and/or Designated County Residential
- Built-Up Urban Area
- Hamlet
- Airport
- Pipeline Corridor
- Proposed Annexation





5.1 Draft Vision for Agriculture and Food
Other Short Versions for Consideration
A secure agricultural land base reinforcing a thriving food economy, highly valued by the regional community, enhancing our region
• A vibrant regional community committed to land, food and agriculture
• Western Canada's leading agri-food region
• Enriching our region with our vibrant food & agriculture economy
• Where food & agriculture matter!

5.1 Draft Vision for Agriculture and Food
Other Short Versions for Consideration
A secure agricultural land base reinforcing a thriving food economy, highly valued by the regional community, enhancing our region
• A vibrant regional community committed to land, food and agriculture
• Western Canada's leading agri-food region
• Enriching our region with our vibrant food & agriculture economy
• Where food & agriculture matter!

5.1 Draft Vision for Agriculture and Food
Other Short Versions for Consideration
A secure agricultural land base reinforcing a thriving food economy, highly valued by the regional community, enhancing our region
• A vibrant regional community committed to land, food and agriculture
• Western Canada's leading agri-food region
• Enriching our region with our vibrant food & agriculture economy
• Where food & agriculture matter!

5.1 Draft Vision for Agriculture and Food
Other Short Versions for Consideration
A secure agricultural land base reinforcing a thriving food economy, highly valued by the regional community, enhancing our region
• A vibrant regional community committed to land, food and agriculture
• Western Canada's leading agri-food region
• Enriching our region with our vibrant food & agriculture economy
• Where food & agriculture matter!

Political will?
... an evolving story!

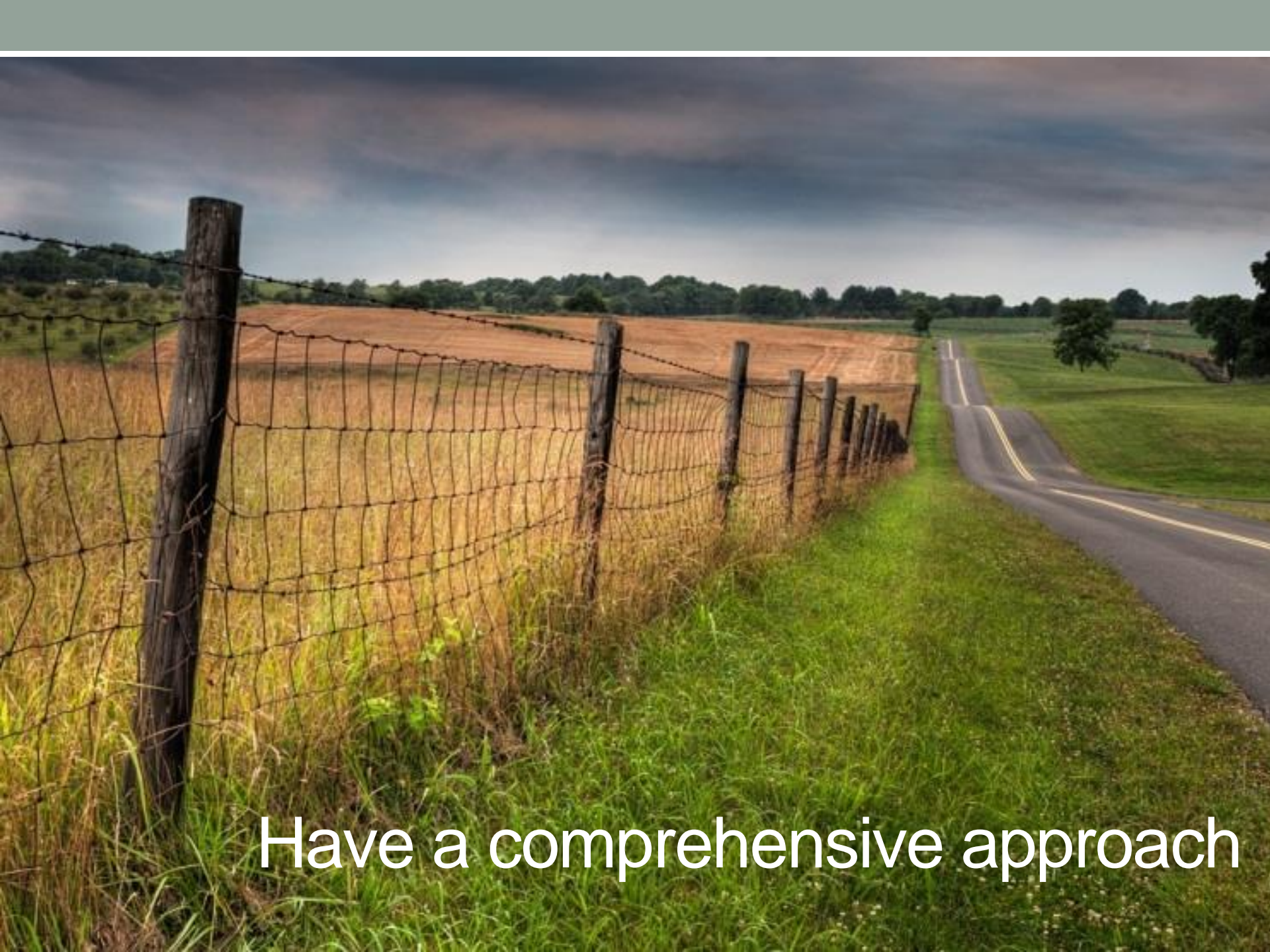
Planning for Agriculture

An aerial photograph of a farm complex. The central part of the image shows several buildings with green roofs, two white cylindrical silos, and a red-roofed structure. To the right is a long, low building with a blue roof. A circular structure, possibly a pond or a large tank, is visible near the bottom right. The farm is surrounded by large fields, some of which are plowed and show distinct furrows. A line of trees with autumn-colored leaves runs along the left side of the farm buildings. The overall scene is captured from a high angle, showing the layout of the farm and its integration with the surrounding agricultural landscape.

Lessons from John and Wayne

Recognize agriculture as an integral part of the community





Have a comprehensive approach

A commitment to agriculture



Communities need to assert their commitment to agriculture with a clear political strategy supported by:

- viable governance structures
- strong economic development
- communications
- land use plans
- infrastructure policies.

An example



Richmond FarmWatch · 5h

One of our [#RichmondBC](#) farmers was issued a \$500 fine for the sign they use every year. [@Richmond_BC](#) [@bogberry](#) [@kelly_bc_ca](#)



9 3 7

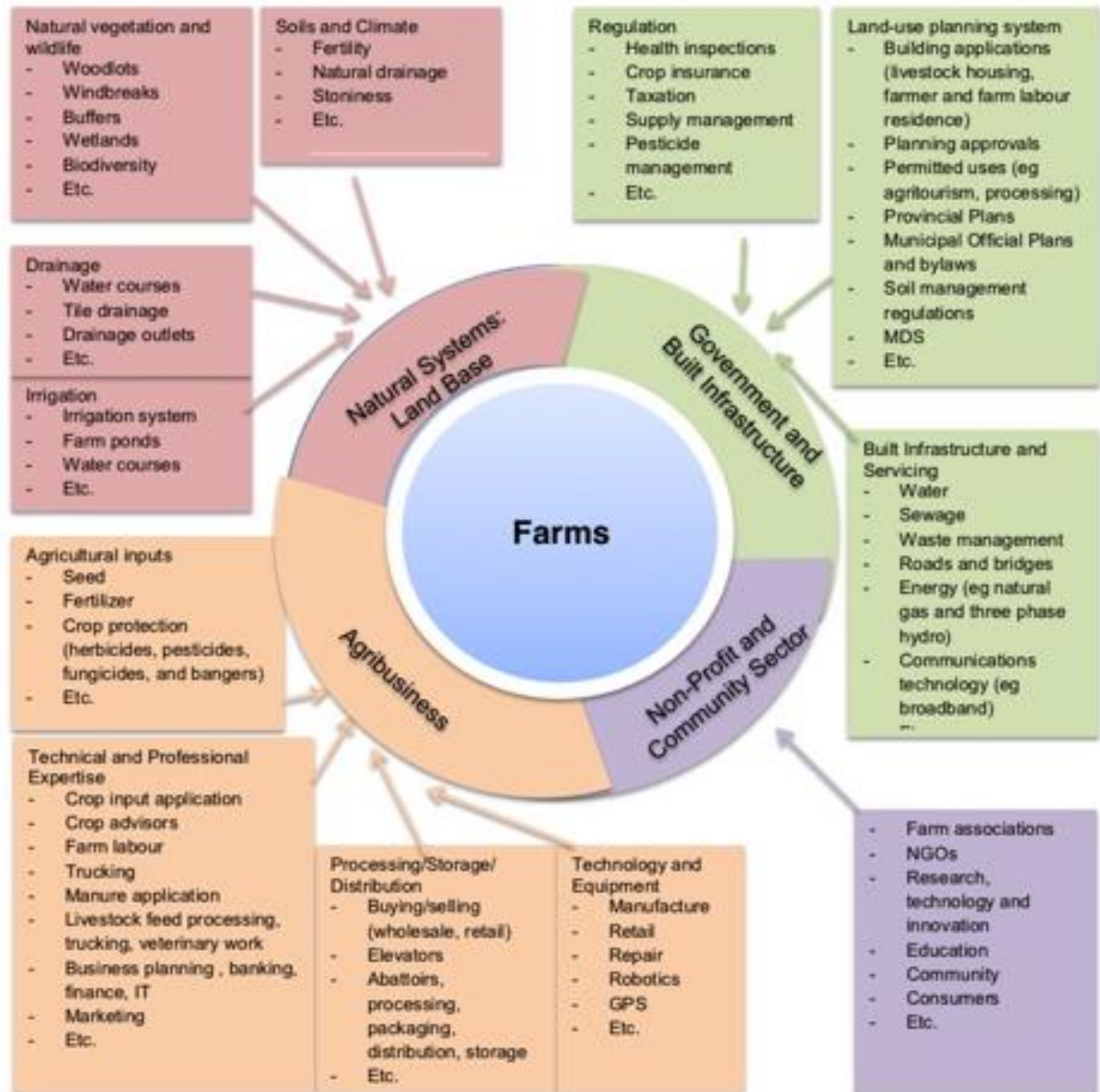


Sandy James Planner · 5h

Speechless.



4



Link Agriculture System Components

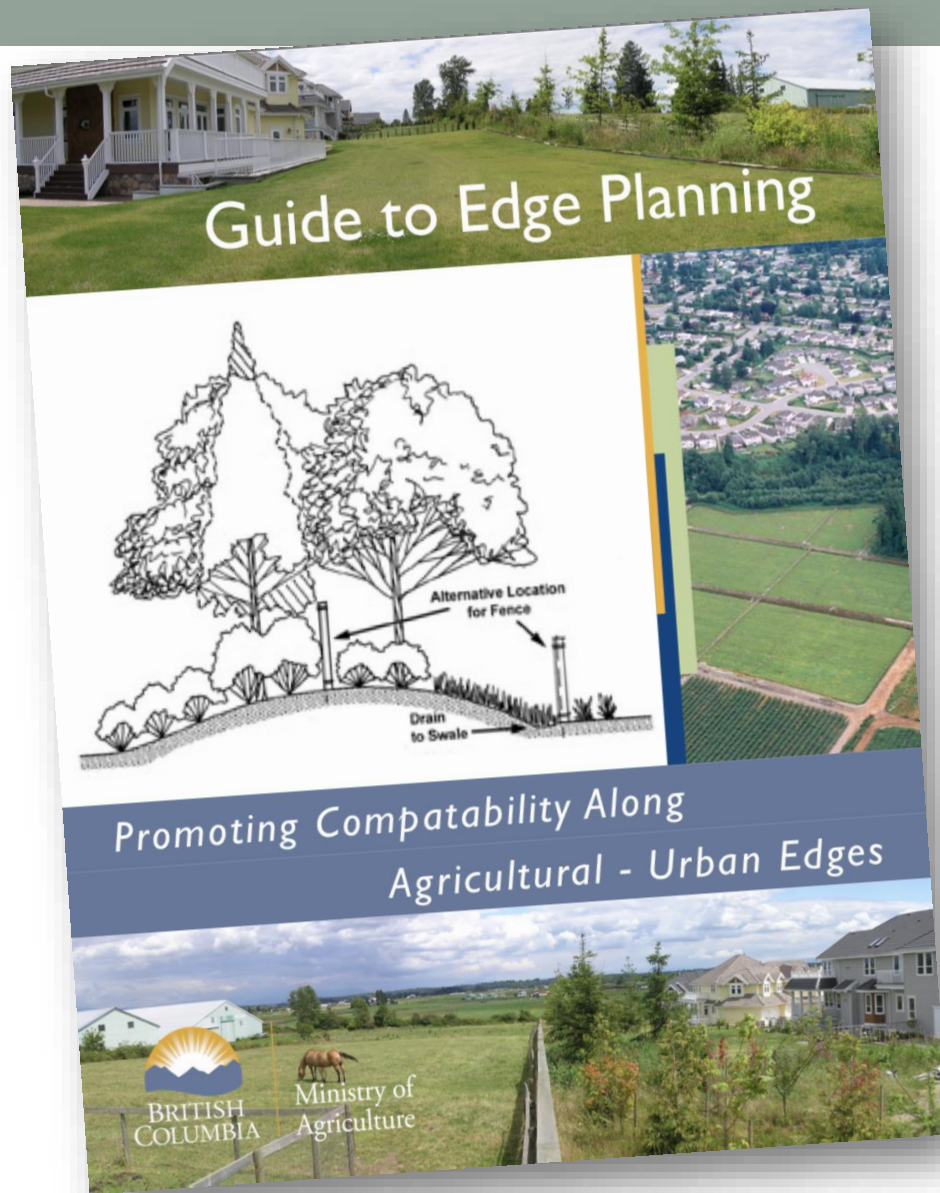


Members of SPADE: Saving Penticton's Agriculture from Division and Extinction

Shared leadership + advocacy

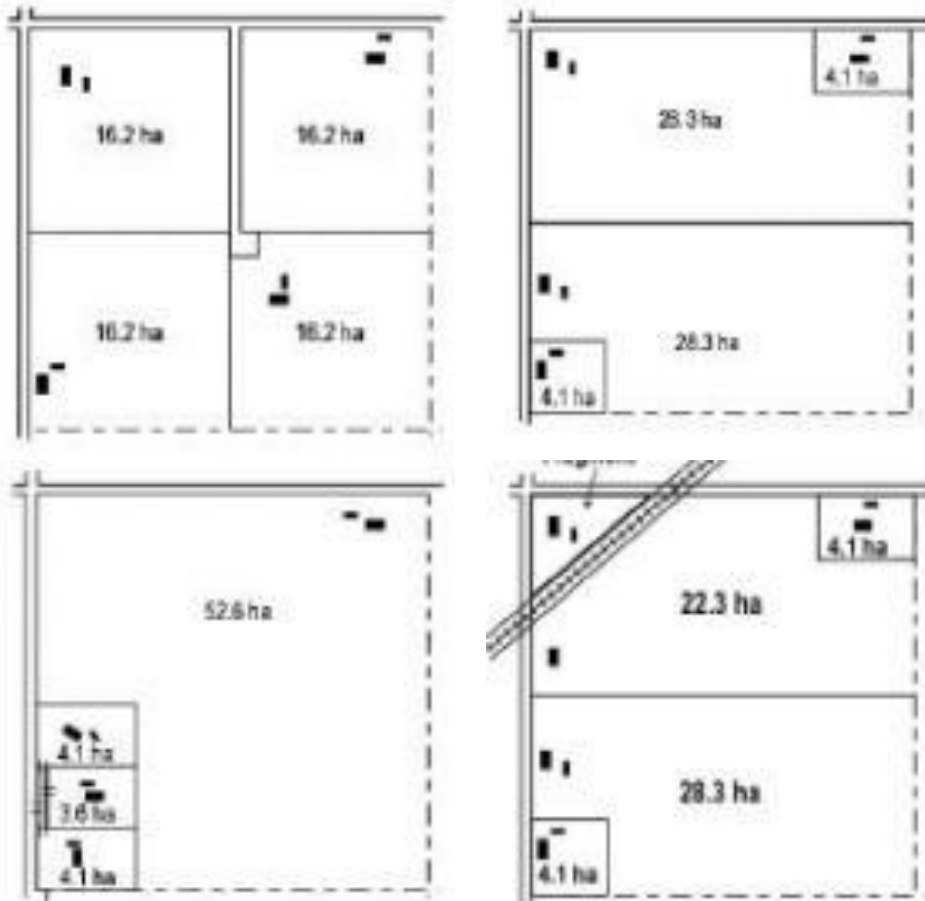
Land use policy:
have an agricultural perspective





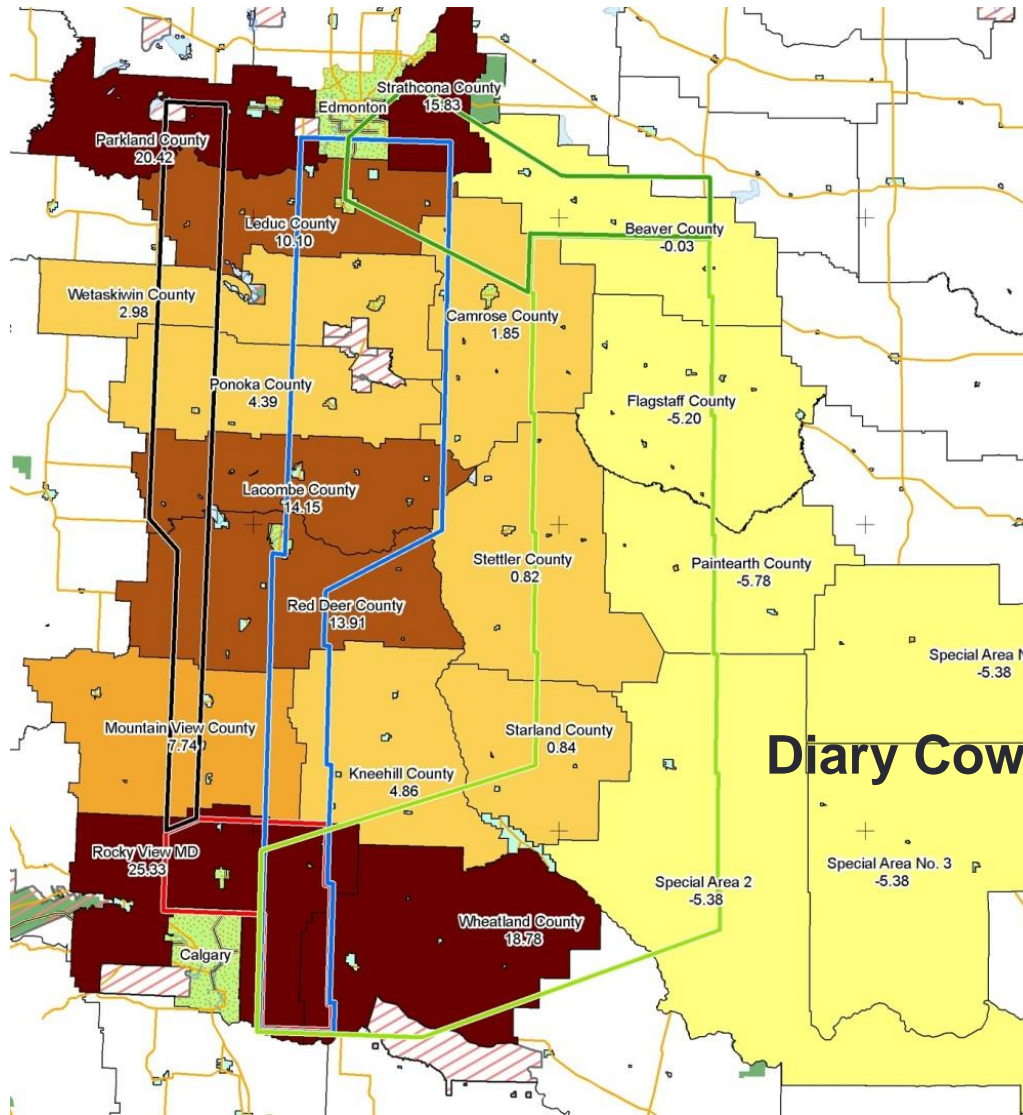
Manage conflict

Minimize Land Fragmentation





Consider Innovative Approaches
(such as Transfer of Development Credits)



Dairy Cows (Cows/km²)

Development: the impact on Agriculture?
(agricultural impact assessment)



Economic development strategies:
have an agricultural component

Create Infrastructure in support of agriculture



Monitoring cycle



Your thoughts?

